



**2019**

# **Component Cost Summary**

**Full Cost Analysis and Operating  
Results for FY 2018: Waste-to-  
Energy, Landfill, Recycling, and  
Transfer Station Costs and  
Statistics**

**Solid Waste Authority  
of Palm Beach County**

7501 North Jog Road  
West Palm Beach, FL 33412  
(561) 640-4000  
[www.swa.org](http://www.swa.org)

*September 2019*

# Solid Waste Authority of Palm Beach County 2019 Component Cost Summary

## Table of Contents

<b>Section 1: Discussion, Results, and Methodology</b>	<b>1</b>
1.0 Introduction	2
1.1 Purpose	2
1.2 Methodology	2
1.3 Solid Waste and Recyclables Quantities	2
2.0 Operating Results	3
2.1 Landfill Operations	3
2.2 Renewable Energy Facility #1	6
2.3 Renewable Energy Facility #2	8
2.4 Recycling Programs Administration	10
2.5 Recovered Materials Processing Facility	10
2.6 Transfer Stations	11
2.6 Household Hazardous Waste	14
2.7 SWA General Administration	14
2.8 Future Sites	14
2.9 Closed Landfills	14
<b>Section 2: Allocation Schedules</b>	<b>15</b>
<b>Section 3: Waste Tonnage History</b>	<b>18</b>

## Solid Waste Authority of Palm Beach County 2019 Component Cost Summary

### List of Figures

Waste Flow Diagram	iv
Summary of Results - Activities	v
Summary of Results - Paths	vi

### Section 1: Discussion, Results and Methodology

Figure 1: Incoming Solid Waste and Recyclables in Tons	3
Figure 2: Landfill Tons, Yards and Cost, FY 2016-FY 2018	3
Figure 3: FY 2018 Landfill Disposal in Tons	4
Figure 4: Landfill Owning and Operating Cost, FY 2018	5
Figure 5: Renewable Energy Facility No. 1 Summary Costs and Statistics, FY 2016-FY 2018	6
Figure 6: Renewable Energy Facility No. 1 Detailed Costs and Statistics, FY 2018	7
Figure 7: Renewable Energy Facility No. 2 Summary Costs and Statistics, FY 2016-FY2018	8
Figure 8: Renewable Energy Facility No. 2 Detailed Costs and Statistics, FY 2018	9
Figure 9: Recovered Materials Processing Facility Statistics, FY 2016-FY 2018	10
Figure 10: RMPF Throughput, Revenue and Expenses, FY 2018	11
Figure 11: Transfer Station Summary Operating Costs and Statistics, FY 2016-2018	12
Figure 12: Transfer Station Throughput and Detailed Operating Costs, FY 2018	13

### Section 2: Allocation Schedules

Departmental Expenditure Allocation Schedule	16
Funds 406 and 407 Un-capitalized Expenditures	17

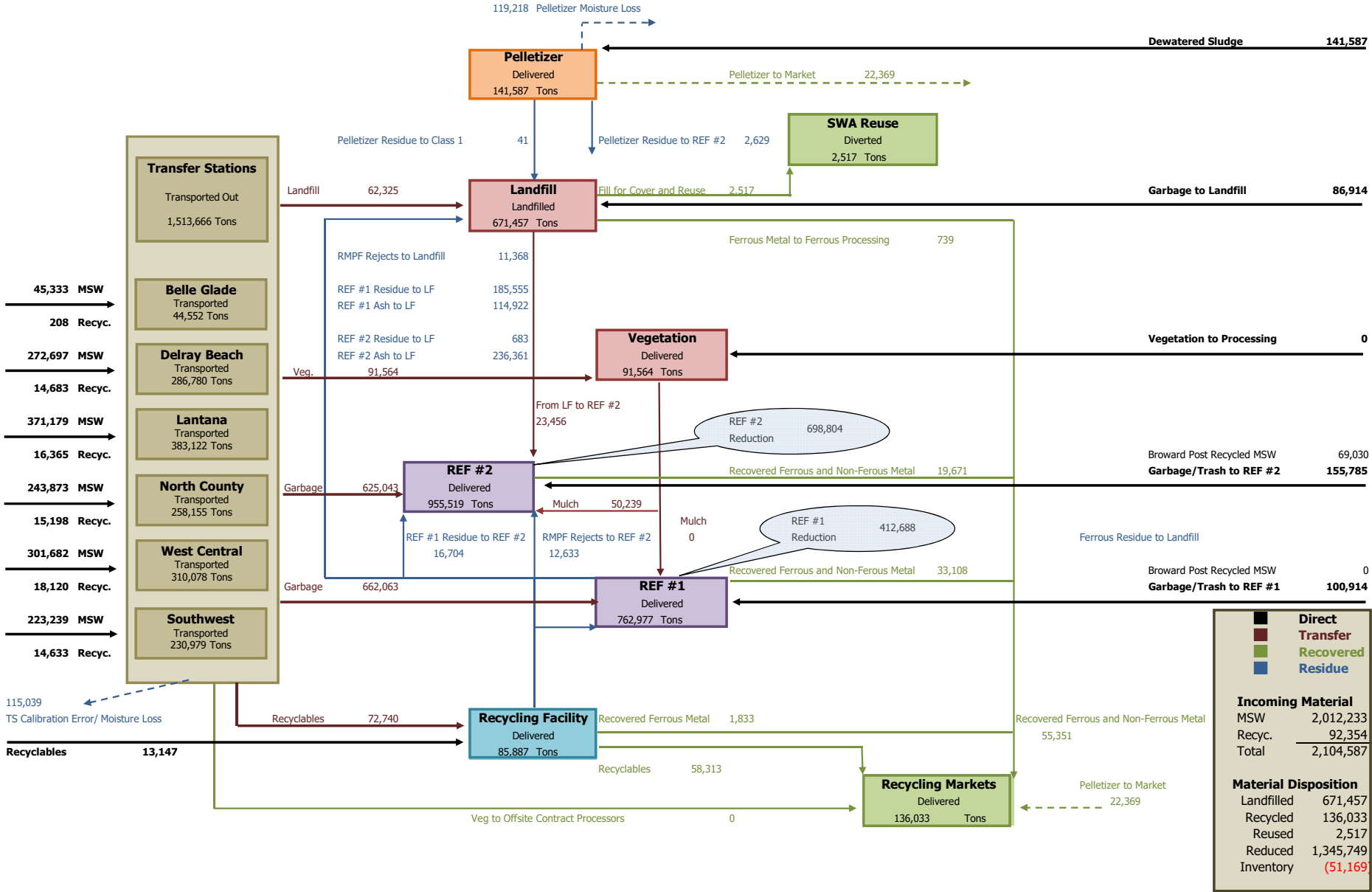
### Section 3: Waste Tonnage History

Historical Solid Waste Receipts, FY 1986 - FY 2018	19
--	----

# Solid Waste Authority of Palm Beach County

## Waste Flow Diagram - FY 2017/2018

Figures in Tons



**Solid Waste Authority of Palm Beach County  
Processing and Disposal Costs by Activity  
FY 2018**

Facility/Operation	Activities		Tons	Cost per Ton
	Discussion	Schedules		
<b>Landfill</b>				
Landfill Operations	p. 3	pp. 4-5	671,457	\$24.64
<b>Incineration</b>				
Renewable Energy Facility #1	p. 6	pp. 6-7	743,338	\$47.57
Renewable Energy Facility #2	p. 8	pp. 8-9	954,837	\$66.30
<b>Recycling</b>				
Recycling Programs Administration (per ton received)	p. 10	p. 10-11	92,356	\$51.96
Recovered Materials Processing Facility (per ton recycled)	p.10	p. 10-11	58,313	\$69.64
<b>Transfer Stations</b>				
Transfer Stations	p. 12	pp. 12-13	1,513,666	\$28.81
Delray Beach Transfer Station	p. 12	pp. 12-13	286,780	\$31.77
Southwest County Transfer Station	p. 12	pp. 12-13	230,979	\$43.86
Belle Glade Transfer Station	p. 12	pp. 12-13	44,552	\$49.34
Lantana Transfer Station	p. 12	pp. 12-13	383,122	\$27.50
North County Transfer Station	p. 12	pp. 12-13	258,155	\$20.52
West Central Transfer Station	p. 12	pp. 12-13	310,078	\$20.45
<b>General Administration</b>				
SWA General Administration	p. 14		2,104,589	\$8.67

**Solid Waste Authority of Palm Beach County  
Processing and Disposal Costs by Path  
FY 2018**

Facility/Operation		WTE Cost		Landfill Cost	
		REF #1	REF #2	Trash	C/D
Collection	1	\$53.67	\$53.67	\$53.67	\$0.00
Transfer	2	\$28.81	\$28.81	\$28.81	\$0.00
Renewable Energy Facility #1		\$46.35			
Renewable Energy Facility #2			\$66.26		
Landfill		\$10.24	\$6.11	\$24.64	\$24.64
SWA General Administration		\$8.67	\$8.67	\$8.67	\$8.67
<b>Collection and Processing Cost per Ton</b>		<b>\$147.74</b>	<b>\$163.52</b>	<b>\$115.79</b>	<b>\$33.31</b>

Facility/Operation		Recycling Curbside
Collection	1	\$345.69
Transfer	2	\$28.81
Residue Disposal at NCRRF		\$7.00
Residue Disposal at Class 1 Landfill		\$4.67
Recovered Materials Processing Facility		\$47.28
Recycling Programs Administration		\$51.96
SWA General Administration		\$8.67
<b>Collection and Processing Cost per Ton</b>		<b>\$494.07</b>

- 1) Garbage, Recyclables collection rates equal weighted average unincorporated rates.
- 2) Weighted average transfer station cost.
- 3) Costs represent the full cost from curbside collection through final disposition.

**2019**

# **Component Cost Summary**

**Section 1: Discussion, Results and  
Methodology**

# Solid Waste Authority of Palm Beach County 2019 Component Cost Summary

## 1.0 INTRODUCTION

The Solid Waste Authority's (SWA) goal is to provide Palm Beach County with a comprehensive and cost effective integrated solid waste management system for solid waste management that meets or exceeds all federal, state, and local regulations. The solid waste system includes a RDF renewable energy facility (REF #1), a landfill, a recovered materials processing facility (RMPF), a household hazardous waste facility, and a network of six transfer stations.

The Component Cost Summary provides an analysis of the costs of operating the SWA's integrated solid waste management system. This report provides a foundation to evaluate system performance and alternatives for the transportation, handling, and disposal of solid waste and recyclables. The costs of operating these facilities and programs on a full production cost basis are presented. A consolidated summary of costs and throughput volumes is presented on Pages vi-vii.

### 1.1 PURPOSE

The purpose of the report is to provide an annual accounting of the costs of the SWA's solid waste management and recycling programs on a full cost basis. Full cost accounting removes the impact of the timing of capital expenditures and expresses the costs of the operations on a full accrual basis to estimate the total economic cost of each component of the solid waste system.

As with all full cost information, care should be exercised in attempting to use full cost information for decision-making purposes. Full costs include fixed costs, sunk costs, and other potentially non-relevant costs. Decision analysis is accomplished by correctly defining the problem and including only those factors that differ under alternative courses of action.

### 1.2 METHODOLOGY

Operating expenses, interest expense, and accrued and amortized future and past expenditures are summarized by department. Service department expenditures are allocated to operating departments based on the most direct causal relationship. Departmental costs are then allocated to production centers/activities. As a departure from full cost accounting, SWA general and administrative expenses, such as finance, accounting, customer service, and executive management are not allocated to production centers, but rather are allocated to an administrative pool. Although such an allocation can be made, the allocation would not be based on any true causal relationship. An allocation of general and administrative expense would cloud the changes in and the relationships between component production costs. Also, keeping the administrative costs separate makes the costs presented more useful for decision-making purposes.

### 1.3 SOLID WASTE AND RECYCLABLES QUANTITIES

Incoming solid waste and recyclables quantities are presented in the following *Figure 1*.



**Figure 1: Incoming Solid Waste and Recyclables in Tons**

	FY 2018	FY 2017	% Change
<b>Solid Waste</b>	2,012,233	2,000,916	0.6%
<b>Recyclables</b>	92,356	90,285	2.3%

In total, solid waste deliveries to the SWA increased only 0.6%, but the underlying data demonstrates significant increases in several waste streams. Garbage deliveries increased 19,092 tons (1.8%); trash deliveries increased 24,300 tons (12.6%); vegetation deliveries increased 17,966 tons (5.5%); building debris deliveries increased 34,972 tons (34.8%); and, deliveries of post-recycled MSW from Broward County decreased 108,050 tons (61.4%) due to the midyear termination of the waste supply agreement. The SWA received 68,030 tons of post-recycled MSW from Broward County at Renewable Energy Facility No. 2 (REF No. 2). A new waste supply agreement was subsequently secured. REF No. 2 was designed and constructed with excess capacity to accommodate future growth in the County. The opportunity to accept “supplemental waste” from outside the County provides both an economic benefit in terms of higher tipping fees and electric revenue, but also operational benefits that result from operating the facility at or near design capacity.

## 2.0 OPERATING RESULTS

This study includes data and discussion of the SWA's major operating areas, including the landfill, the renewable energy facility, the recovered materials processing facility (RMPF), recycling programs, the compost facility, the yard waste processing operation, and the transfer stations.

### 2.1 LANDFILL OPERATIONS

The SWA's landfill occupies approximately 334 acres with an ultimate capacity of in excess of 50 MM cubic yards. As of September 30, 2018, approximately 27.2 MM cubic yards remain to be consumed. The landfill is anticipated to provide capacity through the year 2050. As there are many variables that impact this projection, readers are advised to refer to the SWA's *Landfill Depletion Model* for a detailed presentation of the assumptions and results. *Figure 2* provides the tons landfilled, cubic yards depleted and the average cost per ton landfilled for FY 2018 and the previous two years. *Figure 3* provides a more detailed breakdown of the delivered and landfilled waste for FY 2018.

The average cost per ton landfilled increased from \$21.97 per ton to \$24.64 per ton. This result excludes the impact of an increase in the landfill closure liability of \$4,215,203 resulting from the reopening of closed Cells 5 and 6 and the removal of the liner previously installed on the side slopes of Cells 7 through 10. Significant settlement in the previously closed Cells 5 and 6 provided an opportunity to regain this capacity, which is being used for ash disposal. Including the increase in the liability, the landfill cost was \$30.96 per ton. The life-to-date compacted density increased from 1,760 pounds per cubic yard to 1,794 pounds per cubic yard.

**Figure 2: Landfill Tons, Yards and Cost**

	FY 2018	FY 2017	FY 2016
<b>Tons</b>	671,457	613,534	711,557
<b>Yards</b>	442,759	304,647	299,675
<b>Cost/Ton</b>	\$24.64	\$21.97	\$20.92

**Figure 3: FY 2018 Landfill Disposal in Tons**

<b>Class 3 Waste Quantity Delivered and Landfilled</b>	<b>Tons</b>
From T/S to Class 3 Landfill	41,553.24
Direct to Class 3 Landfill and RMPF Residue	74,257.22
WTE Unprocessibles/Ash	<u>31,107.98</u>
<b>Class 3 Landfill Tons Delivered</b>	<b>146,918.44</b>
<b>Less Recovered Materials</b>	<b><u>(26,035.38)</u></b>
<b>Class 3 Tonnage Landfilled</b>	<b><u>120,883.06</u></b>
<b>Class 1 Waste Quantity Delivered and Landfilled</b>	
WTE Unprocessibles to Class 1 Landfill	2,933.00
WTE Residue to Class 1 Landfill	182,601.15
WTE Ash to Class 1 Landfill	320,878.53
WTE Other	0.00
From T/S to Class 1 Landfill	20,772.22
Direct to Class 1 Landfill, RMPF Residue	<u>24,065.33</u>
<b>Class 1 Landfill Tons Delivered</b>	<b>551,250.23</b>
<b>Less Recovered Materials</b>	<b><u>(676.38)</u></b>
<b>Class 1 Tons Landfilled</b>	<b><u>550,573.85</u></b>
<b>Total Landfilled in Tons</b>	<b><u>671,456.91</u></b>

The cost of landfilling presented herein is comprised of operating expenses, allocated debt service for site acquisition and development, allocated cell construction costs for landfill development, and accrued closure and post-closure care costs reflected in the change in the closure/post-closure liability. The following *Figure 4* presents detailed costs and statistics for Landfill Operations for FY 2018.

Figure 4: Landfill Owning and Operating Cost

Landfill Consumption Data					
	Class 1		Class 3		Total
Approximate Landfill Acreage	262.28		72.00		334.28
Volume in Cubic Yards per Acre	168,253		87,667		150,895
Total Estimated Landfill Volume	44,129,299		6,312,006		50,441,305
Cumulative Volume Depleted Prior Year	16,608,701		6,185,901		22,794,602
Volume Depleted October 1, 2017 to September 30, 2018	340,174		102,585		442,759
Cumulative Volume Depleted Current Year	16,948,875		6,288,486		23,237,361
Total Tons Disposed October 1, 2017 to September 30, 2018	550,574		120,883		671,457
Average Pounds per Cubic Yard	3,237		2,357		3,033
Total Tons Disposed to Date	16,069,465		4,778,432		20,847,897
Average Pounds per Cubic Yard	1,896		1,520		1,794
Cost Data					
	Class 1		Class 3		Total
	\$	\$/Ton	\$	\$/Ton	\$
Debt Service per Cubic Yard	\$1.65		\$1.65		\$1.65
<b>Debt Service Amortization</b>	<b>\$560,969</b>	<b>\$1.02</b>	<b>\$169,169</b>	<b>\$1.40</b>	<b>\$730,138</b>
Cell Construction per Cubic Yard	\$0.98		\$0.00		\$0.75
<b>Cell Construction Amortization</b>	<b>\$334,146</b>	<b>\$0.61</b>	<b>\$0</b>	<b>\$0.00</b>	<b>\$334,146</b>
Landfill Closure per Cubic Yard	\$2.24		\$2.24		\$2.24
<b>Landfill Closure &amp; Post-Closure Accrual</b>	<b>\$761,454</b>	<b>\$1.38</b>	<b>\$229,629</b>	<b>\$1.90</b>	<b>\$991,083</b>
Net of cost of closure of re-opened Cells 5-10 (\$4,215,203)					
Wages and Benefits					\$3,454,830
Equipment Owning and Operating					\$4,276,542
Clean Fill and Other Materials					\$181,977
Administration/Other					\$2,352,386
Leachate Collection and Landfill Gas System Maintenance					\$252,995
Weighstation Allocation					\$491,602
Environmental Programs Allocation					\$1,475,864
Facilities and Grounds Allocation					\$728,366
Utilities Department Allocation					\$1,239,572
<b>Total Operating Expenses</b>					<b>\$14,454,134</b>
Less: Landfill Share of Ferrous Revenues					\$35,448
<b>Total Landfill Expenses</b>					<b>\$16,544,949</b>
<b>Average Cost per Ton Landfilled</b>					<b>\$24.64</b>
<b>Average Cost per Cubic Yard Depleted</b>					<b>\$37.37</b>
<b>Average Cost per Ton Processed</b>					<b>\$23.70</b>

## 2.2 RENEWABLE ENERGY FACILITY #1

The SWA's Refuse Derived Fuel Waste-to-Energy Facility, Renewable Energy Facility No. 1 (REF #1), is owned by the SWA and operated by Covanta under a twenty-year operating agreement. Previously operated by a subsidiary of Babcock and Wilcox Company, Palm Beach Resource Recovery Corporation (PBRRC), PBRRC was acquired by Covanta late in the year. Summary statistics and costs are presented in *Figure 5*.

The facility is primarily a volume reduction machine, significantly reducing the volume of waste landfilled by incineration with energy recovery and by recovering ferrous and non-ferrous metals both pre-combustion and post-combustion. Residues from the facility include unprocessable waste, recovered from the tipping floor, process residue removed during the RDF manufacturing process, and ash. Statistics for the current year and previous two years are presented in *Figure 5*, and provided in more detail in *Figure 6*.

**Figure 5: Renewable Energy Facility #1 Summary Costs and Statistics**

	FY 2018	FY 2017	FY 2016
<b>Throughput (tons)</b>			
Delivered	762,977	785,413	775,887
Unprocessable	19,639	21,201	20,932
Processible	743,338	764,212	754,955
Process Residue	182,619	177,632	177,084
Ash	114,922	124,637	115,545
Recovered Ferrous	29,279	26,821	25,578
Recovered Non-Ferrous	3,829	4,065	3,852
Waste Reduction	445,796	461,943	462,326
<b>Energy Production</b>			
Facility Electric Output (Mwh)	310,985	313,903	309,345
FEO/ton	.418	.411	.402
Energy Revenue (incl. value of energy consumed)	\$20.9 MM	\$20.3 MM	\$18.4 MM
\$/kwh sold to Florida Power and Light	\$.068	\$.065	\$.060
\$/ton (incl. value of energy consumed)	\$28.10	\$26.59	\$24.42
<b>Cost</b>			
Total Owning and Operating Cost	\$55.7 MM	\$56.9 MM	\$60.8 MM
Energy and Metals Revenue (SWA Share)	\$20.3 MM	\$19.6 MM	\$18.0 MM
Net Cost	\$35.4 MM	\$37.3 MM	\$42.8 MM
Net Cost per Ton	\$47.57	\$48.80	\$56.67

The Authority delivered 762,977 tons in FY 2018 versus 785,413 tons in FY 2017. Processible waste declined from 764,212 to 743,338 due to the interruption in the supply of supplemental waste and the need to balance waste deliveries between REF #1 and REF #2. The base contract quantity for REF #1 is 795,000 tons of processible waste; therefore the SWA fell short of the guarantee by 51,662 tons. For FY 2018 the Net Cost per Ton declined from \$48.80 to \$47.57. This cost includes depreciation and interest costs of \$22.75 per ton.

**Figure 6: Renewable Energy Facility #1 Detailed Cost and Statistics**

	\$	% of Gross	% or \$/ton of Processible
<b>Process Quantity (Tons)</b>			
Gross Quantity to Plant	762,976.98	100.00%	
Unprocessable Tonnage	19,639.40	2.57%	
Processible Tonnage	743,337.58	97.43%	
Rejects	182,619.07	23.94%	24.57%
Ash	114,922.40	15.06%	15.46%
Ferrous	29,279.21	3.84%	3.94%
Aluminum and Non-Ferrous Metals	3,829.31	0.50%	0.52%
RDF Landfilled	0.00	0.00%	0.00%
Total Reduction by Weight	445,796.11	58.43%	59.97%
Hauled Directly to WTE Facility	101,986.44	13.37%	
Transferred In through Transfer Station	660,990.54	86.63%	
<b>Electrical Generation (MWH, Per Ton)</b>			
Total Facility Electricity Output	310,984.83		0.418
Less: SWA Usage (Net of Transfers)	3,000.36		0.004
Megawatt Hours to FPL	307,984.47		0.414
<b>Operating Expenses (\$, \$ Per Ton)</b>			
Contractors Operating Fee	\$ 32,268,057		\$43.41
Engineering Services	167,119		0.22
Personal Services	488,426		0.66
Regulatory Consulting	23,159		0.03
Pass Through Property, Casualty and BI Insurance	796,206		1.07
Air Pollution Chemicals and Reagents	2,344,288		3.15
Fire Suppression System Recharge	0		0.00
FP&L Interconnection Fees	26,507		0.04
Electricity	202,453		0.27
Other Expenses/Credits	165,312		0.22
Environmental Monitoring	319,484		0.43
Renewal and Replacement	950		0.00
Utilities Allocation	1,850,886		2.49
Weighstation Allocation	122,900		0.17
Depreciation Expense	13,712,435		18.45
Interest Expense	3,199,823		4.30
Total Expenses	\$ 55,688,006		\$74.92
<b>Electricity Revenues (\$)</b>			
Electricity and Capacity Revenues	\$ 20,884,610		\$28.10
Operator Share of Electric Revenues	0		\$0.00
SWA Share Electricity	\$ 20,884,610		\$28.10
<b>Ferrous Revenues (\$)</b>			
Ferrous Revenues	\$ 1,597,424		\$2.15
Operator Share of Ferrous Revenues	2,153,675		\$2.90
SWA Share Ferrous Revenues	\$ (556,251)		(\$0.75)
Total SWA Revenues	\$ 20,328,359		\$27.35
<b>Net Expense (\$)</b>	<b>\$ 35,359,648</b>		
<b>Net Cost per Processible Ton</b>	<b>\$ 47.57</b>		

## 2.3 RENEWABLE ENERGY FACILITY #2

The SWA's Mass Burn Waste-to-Energy Facility, Renewable Energy Facility No. 2 (REF #2), is owned by the SWA and operated by Covanta under a twenty-year operating agreement. Previously operated by a subsidiary of Babcock and Wilcox Company, Palm Beach Resource Recovery Corporation (PBRRC), PBRRC was acquired by Covanta late in the year. Summary statistics and costs are presented in *Figure 7*.

This facility achieved commercial operation in July 2015. As with REF #1, the facility is primarily a volume reduction machine, significantly reducing the volume of waste landfilled by incineration with energy recovery and by recovering ferrous and non-ferrous metals. Summary statistics are provided in *Figure 7*, and provided in more detail in *Figure 8*.

**Figure 7: Renewable Energy Facility #2 Summary Costs and Statistics**

	FY 2018	FY 2017	FY 2016
<b>Throughput (tons)</b>			
Delivered	955,519	998,742	965,314
Change in Pit Inventory	(1,365)	(1,464)	(530)
Unprocessable	683	648	2,412
Processible	954,837	997,926	967,196
Ash	236,361	227,622	285,389
Recovered Ferrous	19,671	20,690	23,404
Recovered Non-Ferrous	717	775	966
Waste Reduction	718,476	770,472	677,512
<b>Energy Production</b>			
Facility Electric Output (Mwh)	506,865	479,000	489,447
FEO/ton	0.531	0.480	0.506
Energy Revenue (incl. energy consumed/adjustments)	\$18.1 MM	\$15.0 MM	\$16.5 MM
\$/kwh sold to Florida Power and Light	\$.03	\$.03	\$.03
\$/ton (incl. value of energy consumed)	\$16.80	\$15.06	\$17.06
<b>Cost</b>			
Total Owning and Operating Cost	\$83.1 MM	\$84.7 MM	\$85.0 MM
Energy and Metals Revenue (SWA Share)	\$19.8 MM	\$16.9 MM	\$17.7 MM
Net Cost	\$63.3 MM	\$67.8 MM	\$67.3 MM
Net Cost per Ton	\$66.30	\$67.92	\$69.54

The Net Cost per Ton was \$66.30, down from \$67.92 the prior year due to increased throughput. This cost is inclusive of \$59.68 per ton of depreciation and interest. The base contract quantity at REF #2 is 1,000,000 tons per year. Waste burned was under the annual guarantee due to insufficient deliveries resulting from the interruption in the supply of supplemental waste previously discussed. The facility was built with excess capacity to accommodate future growth, so a shortfall of this magnitude was anticipated. In the absence of the interruption of supplemental waste deliveries, the base contract quantity would have been achieved.

**Figure 8: Renewable Energy Facility #2 Detailed Cost and Statistics**

	\$	% of Gross	% or \$/ton of Processible
<b>Process Quantity (Tons)</b>			
Gross Quantity to Plant	955,519.47	100.00%	
Change in Pit Inventory	(1,364.76)		
Unprocessable Tonnage	682.38	0.07%	
Processible Tonnage	954,837.09	99.93%	
Ash	236,360.89	24.74%	24.75%
Ferrous	19,671.04	2.06%	2.06%
Aluminum and Non-Ferrous Metals	716.87	0.08%	0.08%
Total Reduction by Weight	718,476.20	75.19%	75.25%
Hauled Directly to WTE Facility	306,773.38	32.11%	
Transferred In by Transfer Station or CCDC	648,746.09	67.89%	
<b>Electrical Generation (MWH, Per Ton)</b>			
Total Facility Electricity Output	506,864.91		0.531
Less: Power to REF 1	5,706.08		0.006
Megawatt Hours to FPL	501,158.83		0.525
<b>Operating Expenses (\$, \$ Per Ton)</b>			
Contractors Operating Fee	\$ 22,704,638 ▼		\$23.78
Engineering Services	180,087		0.19
Personal Services	135,035 ▼		0.14
Contractual Services	31,326		0.03
Pass Through Insurance	706,184		0.74
Scrubber Reagent	2,007,730		2.10
Fire Suppress Recharge	0		0.00
FP&L Interconnection Fees	0		0.00
Electricity	20,547		0.02
Other Expenses/Credits	(86,778)		(0.09)
Environmental Monitoring	274,974		0.29
Renewal and Replacement	0		0.00
Utilities Allocation	325		0.00
Weighstation Allocation	122,900		0.13
Facilities Maintenance Allocation	23,782		0.02
Depreciation Expense	29,074,913		30.45
Interest Expense	27,907,503		29.23
Total Expenses	\$ 83,103,167		\$87.03
<b>Electricity Revenues (\$)</b>			
Electricity Revenues	\$ 18,111,537		\$18.97
Operator Share of Electric Revenues	0		\$0.00
SWA Share Electricity	\$ 18,111,537		\$18.97
<b>Ferrous Revenues (\$)</b>			
Ferrous and Non-Ferrous Revenues	\$ 1,681,450 ▼		\$1.76
Operator Share of Ferrous Revenues	0		\$0.00
SWA Share Ferrous Revenues	\$ 1,681,450		\$1.76
Total SWA Revenues	\$ 19,792,987		\$20.73
<b>Net Expense (\$)</b>	<b>\$ 63,310,179</b>		
<b>Net Cost per Processible Ton</b>	<b>\$ 66.30</b>		

## 2.4 RECYCLING PROGRAMS ADMINISTRATION

During FY 2018, the SWA received 92,356 tons of recyclables, up 2.3% from the 90,285 tons received in FY 2017. The increase is attributable to an increase in the delivery of commercial paper of 2,187 tons (22.3%) due to the ongoing softness in the recycling markets. It is the experience of the SWA that when the value of recovered fiber declines, private sector recyclers deliver cardboard and commercial paper to the Authority when it is no longer cost effective to process and market the material themselves. In other words, the Authority is the destination of last resort.

The SWA's recycling programs are managed, promoted, and developed by the Department of Recycling. The cost of SWA recycling programs and administration managed by the Department of Recycling totaled \$4.8 million. This amounts to \$51.96 per ton of recyclables received. This cost includes the cost of Recycling Administration (Education and Waste Prevention), Drop-off Collection Programs, Commercial Recycling Promotion, recycling bins and bin distribution, and public affairs. The Recycling Department's public affairs activities support SWA activities other than recycling, therefore this cost is somewhat overstated. A detailed allocation of the costs associated with the department's public affairs activities would result in slightly lower costs than those reported here.

## 2.5 RECOVERED MATERIALS PROCESSING FACILITY

The Recovered Materials Processing Facility (RMPF) receives, sorts, bales and prepares for market a majority of the residential and commercial recyclables collected in Palm Beach County.

**Figure 9: Recovered Materials Processing Facility Costs and Statistics**

	FY 2018	FY 2017	FY 2016
<b>Throughput (tons)</b>			
Delivered and Processed	85,886	87,459	91,798
Marketed	58,313	58,218	74,253
<b>Financial</b>			
Total Expenses	\$9.1 MM	\$8.7 MM	\$8.8 MM
Total Revenues	\$5.3 MM	\$7.9 MM	\$6.6 MM
Net Before Revenue Share	-\$4.3 MM	-\$0.8 MM	-\$1.2 MM
Municipal Revenue Share	\$0.2 MM	\$0.9 MM	\$0.5 MM
Net After Revenue Share	-\$4.1 MM	-\$1.6 MM	-\$2.7 MM
Average Revenue per Ton Sold	\$90.16	\$136.53	\$88.48
SWA Net (Cost)/Revenue per Ton Received	-\$47.28	-\$18.04	-\$29.22

*Figure 9* presents three years of operating and financial data for the RMPF. Total expenses include the operating fees paid to the contract operator, depreciation, interest, and personal services costs for the SWA employees who oversee the operation. While the facility is operated by a private contractor, Republic Services, the SWA markets the processed recovered materials. Fiber products, including newsprint and mixed paper, are sold under contract at prices dictated by market indices. Other commodities, such as plastic and aluminum, are sold to the highest bidder. The SWA shares the revenues under the Municipal Revenue Share Program through which the SWA pays out 50% of the net revenues to the municipalities in proportion to their deliveries. The Municipal Revenue Share Program was initiated to encourage and reward the municipalities for supporting and encouraging recycling. The average net cost per ton received by the facility was \$47.28 per ton, including \$40.38 per ton in depreciation and interest costs. Detailed throughput, revenue and expense information related to the SWA's RMPF and recycling programs are presented in *Figure 10*.



Figure 10: RMPF Throughput, Revenue and Expenses

<b>Total Incoming Recyclable Material Quantity</b>	92,356.18
<b>Incoming Processed Material Quantity</b>	
Direct Incoming Material Quantity	13,146.56
Transferred Material Quantity	72,739.79
<b>Total Incoming</b>	<b>85,886.35</b>
<b>Residue/Disposed Material Quantity*</b>	24,000.85
<b>Recycled Material Quantity</b>	
Corrugated	11,335.53
Newsprint	0.00
Mixed Paper	33,240.41
High Grade Office Paper	0.00
Aseptic	65.23
Glass (Shipped to Market)	4,913.50
Plastic	6,136.82
Aluminum	788.38
Ferrous (to Ferrous Processing)	1,833.27
<b>Total Tons Recycled</b>	<b>58,313.14</b>
<b>Revenues</b>	
Corrugated	\$ 1,147,973
Newsprint	\$ 374,390
Mixed Paper	\$ 503,407
Glass	\$ -
Plastic	\$ 1,999,645
Aluminum	\$ 1,136,852
Ferrous	\$ 95,417
<b>Gross Recycling Revenue</b>	<b>\$ 5,257,684</b>
Revenue Share to CMPA/Municipalities	\$ 222,925
<b>Net RMPF Revenue</b>	<b>\$ 5,034,759</b>
<b>Expenses and Debt</b>	
Interest Expense	\$ 406,049
Depreciation Expense	\$ 3,062,691
Operating Expenses	\$ 311,840
Contractor Operating Fees	\$ 4,498,982
Personal Services	\$ 570,215
Weighstation Allocation	\$ 245,801
<b>Total RMPF Expense</b>	<b>\$ 9,095,578</b>
<b>RMPF Net Cost/(Revenue)</b>	<b>\$ 4,060,820</b>
<b>RMPF Net Cost/(Revenue) per Ton Recycled</b>	<b>\$69.64</b>
<b>RMPF Net Cost/(Revenue) per Ton Received</b>	<b>\$47.28</b>

\* Residue includes 9,226.35 tons of glass delivered to and beneficially used on the landfill due to the absence of a market for the material.

<b>Total Incoming Recyclable Material Quantity</b>	92,356.18
<b>Incoming Processed Material Quantity</b>	
Direct Incoming Material Quantity	13,146.56
Transferred Material Quantity	72,739.79
<b>Total Incoming</b>	<b>85,886.35</b>
<b>Residue/Disposed Material Quantity*</b>	24,000.85
<b>Recycled Material Quantity</b>	
Corrugated	12,708.61
Newsprint	0.00
Mixed Paper	31,511.93
High Grade Office Paper	0.00
Aseptic	52.83
Glass (Shipped to Market)	7,718.24
Plastic	5,950.71
Aluminum	775.98
Ferrous (to Ferrous Processing)	1,833.27
<b>Total Tons Recycled</b>	<b>60,551.57</b>

<b>Revenues</b>	
Corrugated	\$ 1,147,973
Newsprint	\$ 374,390
Mixed Paper	\$ 503,407
Glass	\$ -
Plastic	\$ 1,999,645
Aluminum	\$ 1,136,852
Ferrous	\$ 95,417
<b>Gross Recycling Revenue</b>	<b>\$ 5,257,684</b>
Revenue Share to CMPA/Municipalities	\$ 222,925
<b>Net RMPF Revenue</b>	<b>\$ 5,034,759</b>

<b>Expenses and Debt</b>	
Interest Expense	\$ 406,049
Depreciation Expense	\$ 3,062,691
Operating Expenses	\$ 311,840
Contractor Operating Fees	\$ 4,498,982
Personal Services	\$ 570,215
Weighstation Allocation	\$ 245,801
<b>Total RMPF Expense</b>	<b>\$ 9,095,578</b>

<b>RMPF Net Cost/(Revenue)</b>	<b>\$ 4,060,820</b>
<b>RMPF Net Cost/(Revenue) per Ton Recycled</b>	<b>\$67.06</b>
<b>RMPF Net Cost/(Revenue) per Ton Received</b>	<b>\$47.28</b>

**SWA Recycling Program Net Cost**  
Includes Recycling Administration, Public Education and Container Services

**Materials Revenues**  
SWA RMPF Revenues  
Revenue Share  
**SWA Total Net Material Revenues**

**Expenses**  
Recovered Material Processing  
SWA Recycling Administration  
**SWA Total Recycling Expense**  
  
**Net Recycling Program Cost/(Revenue)**

	Average Dollars per Ton		
	Delivered	Processed	Recycled
\$ 5,257,684			
\$ (222,925)			
<b>\$ 5,034,759</b>	<b>\$54.51</b>	<b>\$58.62</b>	<b>\$83.15</b>
\$ 9,095,578			
\$ 4,798,469			
<b>\$ 13,894,048</b>	<b>\$150.44</b>	<b>\$161.77</b>	<b>\$229.46</b>
<b>\$ 8,859,289</b>	<b>\$95.93</b>	<b>\$103.15</b>	<b>\$146.31</b>

\* Includes 13,265.44 tons of Glass landfilled and used beneficially on the landfill due to the absence of a market.

## 2.6 TRANSFER STATIONS

The SWA owns and operates a network of six transfer stations located throughout Palm Beach County. These facilities provide for the efficient transportation of solid waste and recyclables from the distributed population centers of the county to the Authority's centralized disposal and recycling facilities. The transfer stations are located in Delray Beach, West Delray Beach, Lantana, Royal Palm Beach, Jupiter, and Belle Glade.

The transfer stations create greater system efficiency in several ways. First, conveniently located transfer stations decrease the amount of time collection crews are away from their routes, increase the number of homes serviced per day per route, decrease equipment and manpower requirements, and decrease overall collection cost. Second, because a transfer trailer can carry the waste of more than three average collection vehicles, the cost of transporting waste to the disposal facilities is lower, the lines at the disposal facilities are shorter and more manageable, and traffic is more evenly dispersed throughout the county.

Third, the transfer stations provide a mechanism for the Authority to sort, separate, and direct the flow of waste to the proper facility. Finally, the transfer stations conserve valuable resources by decreasing fuel requirements and vehicle emissions.

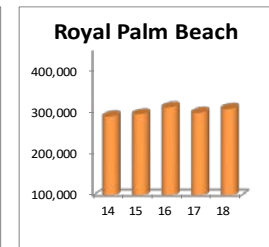
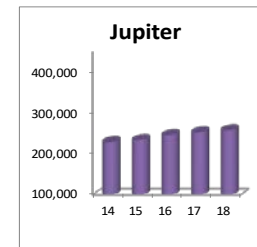
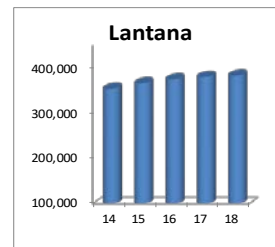
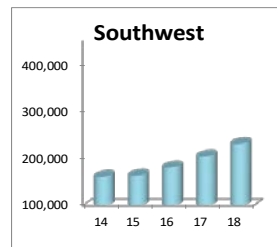
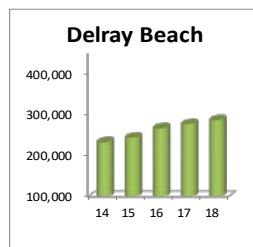
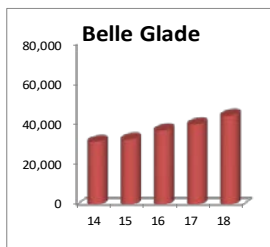
During the year, 73.0% of Palm Beach County waste was delivered to and transported by the transfer stations. Total delivered tonnage increased from 1,470,362 tons to 1,537,210 tons. Total haul tonnage increased from 1,454,713 tons to 1,513,666 tons, and outbound loads increased from 67,116 to 69,835. The transfer stations reduced the number of loads entering the disposal facilities by 418,602, saved an estimated 17.1 million miles on Palm Beach County's roadways, conserved an estimated 3.8 million gallons of fuel, and reduced CO<sub>2</sub> emissions by an estimated 42,000 tons. Compared to last year, transfer station expenditures increased from \$38.8 MM to \$43.6 MM due to higher maintenance costs, higher fuel prices, and higher personal services costs along with higher throughput. Operating data and cost results for each of the transfer stations are presented in *Figure 11* and on the following page.

**Figure 11: Transfer Station Operating Costs and Statistics**

	FY 2016	FY 2017	FY 2018		FY 2016	FY 2017	FY 2018
<b>Belle Glade Transfer Station</b>				<b>Delray Transfer Station</b>			
Tons	37,187	40,136	44,552	Tons	267,233	27,692	286,780
Loads	1,713	1,838	2,019	Loads	12,414	12,759	13,167
Ave. Cost per Ton	\$56.91	\$46.10	\$49.34	Ave. Cost per Ton	\$29.93	\$30.08	\$31.77
Ave. Cost per Load	\$1,235.42	\$1,006.75	\$1,088.71	Ave. Cost per Load	\$644.30	\$652.81	\$691.89
Ave. Load Weight	21.71	21.84	22.07	Ave. Load Weight	21.53	21.70	21.78
<b>Lantana Transfer Station</b>				<b>Jupiter Transfer Station</b>			
Tons	374,663	379,978	383,122	Tons	246,554	253,034	258,155
Loads	17,356	17,390	17,665	Loads	11,848	11,759	12,021
Ave. Cost per Ton	\$24.63	\$24.83	\$27.50	Ave. Cost per Ton	\$17.82	\$17.70	\$20.52
Ave. Cost per Load	\$531.74	\$542.58	\$596.37	Ave. Cost per Load	\$370.80	\$380.91	\$440.68
Ave. Load Weight	21.59	21.85	21.69	Ave. Load Weight	20.81	21.52	21.48
<b>Royal Palm Beach Transfer Station</b>				<b>Southwest Transfer Station</b>			
Tons	313,304	300,496	310,078	Tons	180,952	204,167	230,979
Loads	14,606	13,897	14,301	Loads	8,360	9,473	10,662
Ave. Cost per Ton	\$18.11	\$18.89	\$20.45	Ave. Cost per Ton	\$47.89	\$44.00	\$43.86
Ave. Cost per Load	\$388.55	\$408.37	\$443.45	Ave. Cost per Load	\$1,036.55	\$948.38	\$950.19
Ave. Load Weight	21.45	21.62	21.68	Ave. Load Weight	21.65	21.55	21.66

Figure 12: Transfer Station Throughput and Detailed Operating Costs, FY 2018

	Belle Glade	Delray Beach	Southwest	Lantana	Jupiter	Royal Palm Beach	Total
<b>Throughput</b>							
Tons Delivered	45,541	287,380	237,872	387,544	259,071	319,802	1,537,210
Tons Hauled	44,552	286,780	230,979	383,122	258,155	310,078	1,513,666
Moisture Loss/Calibration Error	989	600	8,893	4,422	916	9,724	23,544
Loads Hauled	2,019	13,167	10,662	17,665	12,021	14,301	69,835
Average Tons per Load	22.07	21.78	21.66	21.69	21.48	21.68	21.67
Miles Traveled	187,767	737,352	639,720	600,610	264,462	371,826	2,801,737
Average Miles per Round Trip	93.0	56.0	60.0	34.0	22.0	26.0	40.1
<b>Expenses</b>							
Personal Services	\$719,415 32.73%	\$2,562,065 28.12%	\$2,176,543 21.48%	\$3,184,020 30.22%	\$2,335,494 44.09%	\$2,587,443 40.80%	\$13,564,980 31.10%
Operating Expenses	\$1,084,437 49.34%	\$3,296,246 36.18%	\$2,951,366 29.13%	\$3,511,316 33.33%	\$1,983,460 37.44%	\$2,268,825 35.78%	\$15,095,650 34.61%
Depreciation	\$304,816 13.87%	\$2,504,932 27.50%	\$3,125,719 30.85%	\$3,284,198 31.17%	\$702,585 13.26%	\$1,167,799 18.41%	\$11,090,049 25.43%
Interest Expense	\$0 0.00%	\$442,523 4.86%	\$1,610,892 15.90%	\$142,514 1.35%	\$0 0.00%	\$0 0.00%	\$2,195,929 5.03%
Environmental Monitoring	\$23,057 1.05%	\$27,843 0.31%	\$23,057 0.23%	\$81,053 0.77%	\$32,569 0.61%	\$30,146 0.48%	\$217,725 0.50%
Insurance and Safety Allocation	\$66,373 3.02%	\$276,552 3.04%	\$243,366 2.40%	\$331,863 3.15%	\$243,366 4.59%	\$287,614 4.54%	\$1,449,134 3.32%
<b>Total Expenses</b>	<b>\$2,198,098 100.00%</b>	<b>\$9,110,161 100.00%</b>	<b>\$10,130,943 100.00%</b>	<b>\$10,534,964 100.00%</b>	<b>\$5,297,474 100.00%</b>	<b>\$6,341,827 100.00%</b>	<b>\$43,613,467 100.00%</b>
<b>Unit Costs</b>							
Average Cost per Mile	<b>\$11.71</b>	<b>\$12.36</b>	<b>\$15.84</b>	<b>\$17.54</b>	<b>\$20.03</b>	<b>\$17.06</b>	<b>\$15.57</b>
Average Cost per Ton	<b>\$49.34</b>	<b>\$31.77</b>	<b>\$43.86</b>	<b>\$27.50</b>	<b>\$20.52</b>	<b>\$20.45</b>	<b>\$28.81</b>
Average Cost per Ton per Mile	<b>\$0.53</b>	<b>\$0.57</b>	<b>\$0.73</b>	<b>\$0.81</b>	<b>\$0.93</b>	<b>\$0.79</b>	<b>\$0.72</b>
Average Cost per Load	<b>\$1,088.71</b>	<b>\$691.89</b>	<b>\$950.19</b>	<b>\$596.37</b>	<b>\$440.68</b>	<b>\$443.45</b>	<b>\$624.52</b>
<b>Unit Cost Breakdown</b>							
<b>Transportation</b>	47.18%	45.14%	33.20%	38.04%	40.20%	45.57%	40.22%
Cost per Ton	\$23.28	\$14.34	\$14.56	\$10.46	\$8.25	\$9.32	\$11.59
Cost per Load	\$513.77	\$312.28	\$315.43	\$226.93	\$177.25	\$202.08	\$251.19
Cost per Mile	\$5.52	\$5.58	\$5.26	\$6.67	\$8.06	\$7.77	\$6.26
Cost per Ton-Mile	\$0.25	\$0.26	\$0.24	\$0.31	\$0.38	\$0.36	\$0.29
<b>Handling and Loading</b>	22.15%	22.76%	16.48%	21.64%	35.43%	30.66%	23.67%
Cost per Ton	\$10.93	\$7.23	\$7.23	\$5.95	\$7.27	\$6.27	\$6.82
Cost per Load	\$241.09	\$157.41	\$156.56	\$128.95	\$156.04	\$135.94	\$147.87
<b>Facility and Administrative</b>	30.66%	32.10%	50.32%	40.32%	24.37%	23.77%	36.09%
Cost per Ton	\$15.13	\$10.20	\$22.07	\$11.09	\$5.00	\$4.86	\$10.40
Cost per Load	\$333.84	\$222.20	\$478.21	\$240.50	\$107.40	\$105.44	\$225.47



## 2.7 Household Hazardous Waste

Household Hazardous Waste Services provides free drop-off locations for Palm Beach County residents and accepts materials from qualifying small quantity commercial generators for a fee. Total expenses related to the household hazardous waste program were \$2,838,084 versus \$2,550,785 in FY 2017. These expenditures do not include the Authority's contribution to the County-wide Hazardous Materials Response Team which amount to \$2,181,158.

## 2.8 SWA General Administration

All departmental costs not directly assigned to a production center or related to past or future operations are charged to the Administrative cost center. The average administrative cost per ton received by the SWA totaled \$8.67 in FY 2018 on expenditures of \$18,237,515 and 2,104,589 tons of Palm Beach County waste delivered. These expenditures include administration building and common area maintenance and debt, Finance and Accounting, Executive and Legal, Information Technology, Engineering, Customer Service, and Purchasing Services.

## 2.9 Future Sites

The SWA owns property in the western part of the County purchased for the purpose of siting a future landfill site. The site is currently leased under a farm lease. Additionally, several future facilities and/or improvements, most notably Renewable Energy Facility #2, are currently in development. The cost of acquiring and developing these future facilities is not reflected in the cost of the current operations. The cost of these facilities will be reflected once those facilities and/or improvements are complete and operational.

## 2.10 Closed Landfills

The SWA is responsible for maintaining six closed landfills. During the year, the SWA expended \$1,523,379 on these landfills. The costs included depreciation expense related to Dyer Park and Park Ridge Golf Course (\$774,490), environmental monitoring charges (\$420,857), utilities charges (\$158,619), and facilities/grounds maintenance charges (\$157,645). On an accrual accounting basis, these costs are associated with the revenues received when the landfills were operational and are not associated with the SWA's current operating landfill. Future care costs associated with the current landfill are accrued based on landfill consumption and are reflected as period costs.





**2019**

# **Component Cost Summary**

**Section 2: Allocation Schedules**

**Solid Waste Authority of Palm Beach County  
Departmental Expenditure Allocation Schedule  
October 1, 2017 to September 30, 2018**

Unit	Department	Fund 403 Expense	Plus: Depreciation	Plus: Expensed Fund 406/407	Net Expense	Capitalized Interest	Plus: Interest Expense	Allocation of Personnel and Benefits	Allocation of Workers Comp. and Risk	Subtotal 1	Allocation of Environmental Programs	Allocation of Utilities - Water and Power	Allocation of Undistributed Equipment Maintenance	Allocation of Facilities Maintenance Services	Allocation of Grounds Maintenance Services	Subtotal 2	Other Allocations	Total	Category
1101	Executive Director	4,001,232	307	0	4,001,539			65,204	22,124	4,088,867			0			4,088,867		4,088,867	Administration
1202	Executive Support	151,576			151,576			65,204	22,124	238,904						238,904		238,904	Administration
1204	Legal Support				0			0	0	0			0			0		0	Administration
1411	Employee Relations	12,910,370			12,910,370			(12,910,370)	0	0						0		0	Administration
3200	Renewable Energy Facility #2	25,655,105	29,074,913		54,730,018		27,907,503	32,602	11,062	82,681,185	274,974	325		23,782		82,980,266	122,900	83,103,167	REF #2
3201	Chief Engineer	762,775			762,775			163,010	55,310	981,095						981,095		981,095	Administration
4201	Chief Administrative Officer				0			0	0	0						0		0	Administration
4211	Hazardous Waste Services	3,798,025	204,895		4,002,920		272,914	391,223	132,745	4,799,803	22,007	49,391	52,739	80,596	14,707	5,019,242		5,019,242	Hazardous Waste
4231	Environmental Programs	2,517,848	15,778	0	2,533,626			358,621	121,683	3,013,930	(3,013,930)					0		0	Administration
4261	Risk and Safety	4,312,439	68,148	0	4,380,587			0	(4,380,587)	0						0		0	Administration
4272	Project Engineering	716,409	18,428		734,837			195,612	66,373	996,821			6,913			1,003,734		1,003,734	Administration
4273	Renewable Energy Facility #1	38,522,714	13,712,435	0	52,235,149		3,199,823	97,806	33,186	55,565,965	274,184	1,850,886	0	27,746		57,718,781	122,900	57,841,681	REF #1
4274	Facilities Maintenance	1,831,472	91,843		1,923,315			391,223	132,745	2,447,283		161,347	39,295	(2,486,579)		161,347		161,347	Facilities Maintenance
4275	Recovered Materials Processing Facility	5,165,851	3,062,691		8,228,542		406,049	130,408	44,248	8,809,247	30,231	0	3,693	6,606		8,849,777	245,801	9,095,578	Recycling
4277	Biosolids Pelletization Facility	7,382,571	2,942,716	0	10,325,287			32,602	11,062	10,368,951	199,186	241,775		1,321		10,811,233		10,811,233	BPF
4278	North County Mass Burn Plant				0					0						0		0	Future Site
4801	Chief Financial Officer	370,516			370,516			32,602	11,062	414,180						414,180		414,180	Administration
4812	Financial Services	1,780,178			1,780,178			521,631	176,993	2,478,803			946			2,479,748		2,479,748	Administration
4814	Weigh Stations	1,317,753	218,335		1,536,088			684,641	232,304	2,453,033			4,977	0		2,458,009	(2,458,009)	0	Administration
4851	Purchasing	893,948	198,743	0	1,092,691			228,214	77,435	1,398,339			3,265			1,401,604		1,401,604	Administration
4841	EBO Administration	77,891			77,891			130,408	44,248	252,547			0			252,547		252,547	Administration
4861	Customer Service	468,867			468,867			652,039	221,242	1,342,148			24,344			1,366,492		1,366,492	Administration
4862	Public Affairs		5,423		5,423			0	0	5,423			0			5,423		5,423	Administration
4863	Recycling Services	3,858,152	81,674		3,939,826			619,437	210,180	4,769,443			29,027			4,798,469		4,798,469	Recycling
4864	Recycling Container Services				0			0	0	0			0			0		0	Recycling
4871	Information Technology	1,912,075	66,193		1,978,268			326,019	110,621	2,414,908			4,819			2,419,727		2,419,727	Administration
5801	Chief Operating Officer	243,606			243,606			32,602	11,062	287,270			1,464			288,734		288,734	Administration
5813	Landfill Operations	6,060,774	2,057,032	252,995	8,370,801	327,642	402,496	880,253	298,676	10,279,868	1,475,864	1,239,572	1,039,895	346,166	382,200	14,763,566	491,602	15,255,168	Landfill Operations
5814	Grounds Maintenance	1,000,230	68,085		1,068,315			391,223	132,745	1,592,283			248,040	0	(1,840,324)	0		0	Grounds Maintenance
5816	Jog Road Common Area	33,836	138,904		172,740					172,740						172,740		172,740	Administration
5817	West County Landfill				0					0						0		0	Landfill Operations
5832	Belle Glade Transfer Station	1,027,252	304,816	0	1,332,068			195,612	66,373	1,594,052	23,057		207,767	110,984	16,437	1,952,297	245,801	2,198,098	Transfer Stations
5833	South County Transfer Station	3,697,084	2,504,932	0	6,202,016		442,523	815,049	276,552	7,736,140	27,843		880,501	153,264	66,613	8,864,360	245,801	9,110,161	Transfer Stations
5834	Central County Transfer Station	4,011,664	3,284,198	0	7,295,862		142,514	978,058	331,863	8,748,297	81,053		799,805	335,596	324,412	10,289,163	245,801	10,534,964	Transfer Stations
5835	North County Transfer Station	2,602,307	702,585	0	3,304,892			717,243	243,366	4,265,501	32,569		419,030	229,896	104,677	5,051,673	245,801	5,297,474	Transfer Stations
5836	West Central Transfer Station	2,950,786	1,167,799	0	4,118,584			847,651	287,614	5,253,849	30,146		501,256	253,679	57,096	6,096,026	245,801	6,341,827	Transfer Stations
5837	Southwest Transfer Station	3,102,879	3,125,719		6,228,598		1,610,892	717,243	243,366	8,800,099	23,057		702,058	293,316	66,613	9,885,142	245,801	10,130,943	Transfer Stations
5853	Yardwaste Operations	846,610			846,610			0	0	846,610	0		0			846,610		846,610	Vegetation
5854	Utility Operations	2,362,858	1,076,396	8,083	3,447,337		14,308	586,835	199,118	4,247,597	30,231	(4,277,828)				0		0	Utilities
5871	Fleet Maintenance	0	0		0					0			0			0		0	Equipment Maintenance
5873	Equipment Maintenance Services	1,293,002	1,269,726		2,562,728			1,630,097	553,104	4,745,930	38,232	185,672	(4,969,834)			0		0	Equipment Maintenance
	General Administration	1,400,120	20,046		1,420,166		77,103	0	0	1,497,269	210	389,887	0	593,238	643,114	3,123,719		3,123,719	Administration
	Ferrous Processing Facility				0		782			782	30,231	352			37,199	68,564		68,564	Ferrous
	Western Landfill Site Acquisition (Stofin)	(103,743)			(103,743)					(103,743)						(103,743)		(103,743)	Future Site
	Compost Operations				0					0						0		0	Administration
	Landfill Expansion/Landfill Gas Capitalized				0		91,425			91,425						91,425		91,425	Landfill Development
	Unused				0					0						0		0	Unused
	Unused				0					0						0		0	unused
	NCRSWDF Closure/Gas Expensed to LF				0					0						0		0	Closure
	Financial Assurance Charged to Liability			5,206,286	5,206,286					5,206,286						5,206,286		5,206,286	Closure
	Closed Landfills	11,769	774,490		786,259			0		786,259	420,857	158,619		30,389	127,256	1,523,379		1,523,379	Closed Landfill
	Total	148,948,800	66,257,250	5,467,364	220,673,414	327,642	34,568,334	(0)	0	255,569,390	0	0	0	(0)	0	255,569,390	0	255,569,390	

**Solid Waste Authority of Palm Beach County**  
**Capital Improvement and Renewal and Replacement (Fund 406 and Fund 407) Un-Capitalized Expenditures**  
**October 1, 2017 to September 30, 2018**

Department	Fund 406 Expenditures	Capitalized Equipment	Capitalized Improve	Capitalized Buildings	Expensed	Landfill Expansion	Landfill Closure	Closure Expense	Landfill Gas	Closed Landfill	Fill	Allocations	Balance
1101 Executive Director	\$16,537.00	\$0.00		\$16,537.00	\$0.00								0.00
1202 Executive Support					\$0.00								0.00
1204 Legal					\$0.00								0.00
1411 Employee Relations					\$0.00								0.00
4201 Chief Administrative Officer					\$0.00								0.00
4211 Hazardous Waste Services					\$0.00								0.00
4231 Environmental Programs	\$147,753.00	\$1,167.00	\$146,586.00		\$0.00								0.00
4261 Risk	\$162,806.00	\$162,806.00			\$0.00								0.00
4272 Project Engineering (incl. 5711)	\$1,839,963.00	\$11,939.00	\$1,504,880.00	\$46,425.00	\$276,719.00		244,252.00					32,467.00	0.00
4273 NCRRF	\$1,584,113.00	\$1,584,113.00			\$0.00								0.00
4274 Facilities Maintenance	\$111,501.00			\$111,501.00	\$0.00								0.00
4275 Residential MRF					\$0.00								0.00
4276 Commercial MRF					\$0.00								0.00
4277 Biosolids Pelletization Facility	\$354,442.00	\$354,442.00			\$0.00								0.00
4278 North County Mass Burn Plant					\$0.00								0.00
4279 Ferrous Processing Facility					\$0.00								0.00
4801 Chief Financial Officer					\$0.00								0.00
4812 Financial Services					\$0.00								0.00
4814 Weigh Stations					\$0.00								0.00
4851 Purchasing					\$0.00								0.00
4861 Customer Service					\$0.00								0.00
4862					\$0.00								0.00
4863 Recycling Services	\$6,998.00	\$6,998.00			\$0.00								0.00
4864 Recycling Container Services					\$0.00								0.00
4871 Information Technology	\$214,596.00	\$214,596.00			\$0.00								0.00
5745 Sludge Pelletization					\$0.00								0.00
5801 Chief Operating Officer					\$0.00								0.00
5813 Landfill Operations	\$94,869.00	\$94,869.00			\$0.00							(252,995.00)	252,995.00
5814 Grounds Maintenance	\$24,021.00	\$24,021.00			\$0.00								0.00
5816 Jog Road Common Area (Incl. Trail Project)					\$0.00								0.00
5817 West County Landfill					\$0.00								0.00
5821 Closed Landfill					\$0.00								0.00
5828 Closure NCRSWDF					\$0.00								0.00
5832 Belle Glade Transfer Station					\$0.00								0.00
5833 South County Transfer Station	\$15,281.00	\$15,281.00			\$0.00								0.00
5834 Central County Transfer Station					\$0.00								0.00
5835 North County Transfer Station	\$251,414.00			\$251,414.00	\$0.00								0.00
5836 West Central Transfer Station	\$273,805.00	\$273,805.00			\$0.00								0.00
5837 Southwest County Transfer Station	\$547,610.00	\$547,610.00			\$0.00								0.00
5852 Compost Operations					\$0.00								0.00
5853 Yardwaste Operations					\$0.00								0.00
5854 Utility Systems	\$582,223.00	\$265,769.00			\$316,454.00				87,843.00			220,528.00	8,083.00
5871 Fleet Maintenance	\$2,002,846.00	\$2,002,846.00			\$0.00								0.00
5873 Equipment Maintenance Services	\$1,335,096.00	\$1,335,096.00			\$0.00								0.00
General Administration					\$0.00								0.00
Ferrous Processing Facility					\$0.00								0.00
Future Site					\$0.00								0.00
Landfill Closure Liability	\$5,206,286.00				\$5,206,286.00			\$5,206,286.00					0.00
<b>Total</b>	<b>\$14,772,160.00</b>	<b>\$6,895,358.00</b>	<b>\$1,651,466.00</b>	<b>\$425,877.00</b>	<b>\$5,799,459.00</b>	<b>\$0.00</b>	<b>\$244,252.00</b>	<b>\$5,206,286.00</b>	<b>\$87,843.00</b>	<b>\$0.00</b>	<b>\$0.00</b>	<b>\$0.00</b>	<b>\$261,078.00</b>



**2019**

# **Component Cost Summary**

**Section 3: Waste Tonnage History**

**Solid Waste Authority of Palm Beach County  
Historical Solid Waste Tonnnages**

FY 85/86*	Month	Animals	Reef	Asbestos	C/D	Residue	Tires	Sludge	Direct	Fill	Furn.	Garbage	Land/Cirg.	Pest/Paint	Special	Trailers	Mulch	Trash/Other	Vegetation	Total
October	0.00	0.00	0.00	32.65	23,716.52	0.00	273.71	23.91	0.00	118.75	0.00	42,504.37	0.00	1.74	329.35	3.75	0.00	22,933.28	3,407.00	93,345.03
November	0.00	0.00	0.00	12.24	23,075.80	0.00	473.52	0.00	0.00	141.25	0.00	41,433.41	0.00	12.88	43.04	0.00	0.00	24,610.05	2,415.65	92,217.84
December	0.00	0.00	0.00	58.18	27,322.69	0.00	181.56	17.25	0.00	37.50	0.00	45,837.13	0.00	0.18	1,124.52	0.00	0.00	23,147.46	2,041.56	99,768.03
January	0.00	0.00	0.00	25.28	26,489.35	0.00	143.27	36.89	0.00	228.75	0.00	46,896.31	0.00	15.15	273.62	4.52	0.00	30,082.72	1,862.85	106,058.71
February	0.00	0.00	0.00	25.61	22,411.99	0.00	111.69	4.37	0.00	43.75	0.00	43,533.76	603.38	0.84	209.93	4.25	0.00	21,172.99	2,015.95	90,138.51
March	0.00	0.00	0.00	14.89	19,738.94	0.00	108.36	3.22	0.00	63.64	0.00	49,707.50	3,421.84	47.39	360.65	4.30	0.00	20,162.28	2,022.01	95,655.02
April	0.00	0.00	0.00	25.56	22,019.13	0.00	124.56	4.42	0.00	90.00	0.00	45,560.25	10,059.82	0.66	333.27	0.45	0.00	23,828.78	2,510.97	104,557.87
May	0.00	0.00	0.00	57.31	17,657.65	0.00	65.71	0.00	0.00	18.75	0.00	44,131.03	18,623.31	32.85	77.54	3.55	0.00	24,649.83	2,815.36	108,132.89
June	0.00	0.00	0.00	21.24	21,010.29	0.00	182.23	4.89	0.00	360.00	0.00	44,881.97	17,375.65	2.36	3,727.63	1.00	0.00	25,140.90	3,172.81	115,880.96
July	0.00	0.00	0.00	9.71	18,951.68	0.00	212.54	10.09	0.00	438.75	0.00	45,445.73	11,316.05	2.15	74.82	1.00	0.00	27,363.67	3,076.43	106,902.61
August	0.00	0.00	0.00	23.17	19,665.82	0.00	373.49	8.93	0.00	195.00	0.00	42,704.94	12,186.03	16.05	63.36	7.70	0.00	23,020.79	2,809.52	101,074.80
September	0.00	0.00	0.00	40.82	25,350.12	0.00	439.80	4.68	0.00	36.92	0.00	44,138.87	13,578.23	19.09	606.22	3.67	0.00	22,406.48	2,573.91	109,198.80
Total	0.00	0.00	0.00	346.66	267,409.95	0.00	2,690.44	118.65	0.00	1,773.06	0.00	536,775.27	87,164.31	151.34	7,223.95	34.19	0.00	288,519.24	30,724.02	1,222,931.09
Average	0.00	0.00	0.00	28.89	22,284.16	0.00	224.20	9.89	0.00	147.76	0.00	44,731.27	7,263.69	12.61	602.00	2.85	0.00	24,043.27	2,560.34	101,910.92
Percent	0.00%	0.00%	0.00%	0.03%	21.87%	0.00%	0.22%	0.01%	0.00%	0.14%	0.00%	43.89%	7.13%	0.01%	0.59%	0.00%	0.00%	23.59%	2.51%	100.00%

FY 86/87*	Month	Animals	Reef	Asbestos	C/D	Residue	Tires	Sludge	Direct	Fill	Furniture	Garbage	Land/Cirg.	Pest/Paint	Special	Trailers	Mulch	Trash/Other	Vegetation	Total
October	0.00	0.00	0.00	28.36	33,776.62	0.00	393.77	0.00	0.00	48.75	0.00	45,630.98	16,590.42	4.58	290.22	2.30	0.00	18,833.42	2,699.80	118,299.22
November	0.00	0.00	0.00	35.32	28,495.31	0.00	261.49	8.77	0.00	27.50	0.00	45,504.00	13,112.31	2.66	281.09	1.05	0.00	16,581.92	2,186.44	106,497.86
December	0.00	0.00	0.00	62.87	31,451.67	0.00	413.85	44.54	0.00	57.32	0.00	55,055.42	11,845.50	1.27	269.71	8.33	0.00	16,425.12	2,097.92	117,733.31
January	0.00	0.00	0.00	60.67	30,277.69	0.00	411.70	10.72	0.00	150.62	0.00	51,699.26	8,856.43	0.38	660.98	5.59	0.00	16,772.10	2,270.95	111,177.09
February	0.00	0.00	0.00	100.20	29,516.31	0.00	1,078.77	7.71	0.00	85.25	0.00	47,977.67	9,284.64	1.68	117.89	2.50	0.00	18,070.80	2,079.60	108,323.02
March	0.00	0.00	0.00	35.46	17,241.63	0.00	363.16	10.84	0.00	998.88	0.00	55,711.68	8,426.25	3.75	44.54	0.95	0.00	17,750.43	2,587.70	103,175.27
April	0.00	0.00	0.00	42.75	20,831.52	0.00	352.68	11.94	0.00	904.41	0.00	50,328.29	4,609.04	2.18	77.00	0.00	0.00	17,033.33	2,875.57	97,068.72
May	0.00	0.00	0.00	77.52	23,435.69	0.00	305.82	0.00	0.00	322.29	0.00	48,960.85	4,957.82	12.12	3.63	3.90	0.00	16,032.65	2,521.97	96,634.27
June	0.00	0.00	0.00	23.43	25,624.36	0.00	318.31	6.30	0.00	281.98	0.00	48,957.20	4,176.42	0.14	14.95	0.00	0.00	17,931.40	3,207.66	100,542.15
July	0.00	0.00	0.00	33.14	24,345.24	0.00	300.39	0.00	0.00	208.12	0.00	49,564.90	3,889.55	10.04	39.45	1.25	0.00	17,884.48	3,288.51	99,565.06
August	0.00	0.00	0.00	47.99	23,557.19	0.00	368.11	7.77	0.00	253.39	0.00	45,242.56	4,685.84	0.47	99.52	3.70	0.00	16,262.77	2,835.51	93,364.81
September	0.00	0.00	0.00	96.14	22,885.71	0.00	434.22	3.51	0.00	288.68	0.00	48,129.41	4,062.24	8.01	286.98	0.00	0.00	18,587.31	2,980.59	97,762.80
Total	0.00	0.00	0.00	643.85	311,438.92	0.00	5,002.27	112.10	0.00	3,627.19	0.00	592,762.22	94,496.26	47.28	2,185.96	29.57	0.00	208,165.74	31,632.22	1,250,143.56
Average	0.00	0.00	0.00	53.65	25,953.24	0.00	416.86	9.34	0.00	302.27	0.00	49,396.85	7,874.69	3.94	182.16	2.46	0.00	17,347.14	2,636.02	104,178.63
Percent	0.00%	0.00%	0.00%	0.05%	24.91%	0.00%	0.40%	0.01%	0.00%	0.29%	0.00%	47.42%	7.56%	0.00%	0.17%	0.00%	0.00%	16.65%	2.53%	100.00%

FY 87/88*	Month	Animals	Reef	Asbestos	C/D	Residue	Tires	Sludge	Direct	Fill	Furniture	Garbage	Land/Cirg.	Pest/Paint	Special	Trailers	Mulch	Trash/Other	Vegetation	Total
October	0.00	0.00	0.00	210.76	23,142.60	0.00	203.09	7.83	0.00	307.68	0.00	50,145.73	3,761.04	0.55	216.55	0.00	0.00	18,797.22	3,223.35	100,016.39
November	0.00	0.00	0.00	211.58	21,954.85	0.00	75.88	3.82	0.00	899.60	0.00	50,279.05	3,069.62	0.24	162.25	0.00	0.00	17,028.29	2,546.12	96,231.30
December	0.00	0.00	0.00	215.23	22,949.80	0.00	93.09	9.50	0.00	318.23	0.00	53,532.36	2,812.24	3.67	1,052.80	1.62	0.00	16,727.68	1,960.80	99,677.01
January	0.00	0.00	0.00	45.98	20,303.32	0.00	162.03	35.04	0.00	224.63	0.00	52,228.10	4,137.48	0.74	83.03	1.12	0.00	17,945.73	1,270.15	96,437.34
February	0.00	0.00	0.00	71.86	19,236.14	0.00	205.13	14.48	0.00	929.91	0.00	53,829.24	3,425.54	0.80	940.59	0.00	0.00	17,840.77	1,274.36	97,768.82
March	0.00	0.00	0.00	124.40	24,563.60	0.00	138.00	8.63	0.00	940.87	0.00	58,845.36	3,345.92	0.55	19.45	7.24	0.00	18,832.27	1,554.55	108,380.83
April	0.00	0.00	0.00	116.41	21,334.22	0.00	84.34	5.74	0.00	1,460.20	0.00	52,492.48	3,685.82	0.00	22.53	0.00	0.00	18,192.37	1,501.67	98,895.78
May	0.00	0.00	0.00	110.49	21,145.85	0.00	136.40	63.25	0.00	786.55	0.00	53,790.68	5,028.27	0.23	22.65	1.00	0.00	19,491.15	1,530.05	102,106.57
June	0.00	0.00	0.00	186.33	26,428.47	0.00	259.92	200.65	0.00	394.63	0.00	54,840.00	3,378.51	23.07	0.00	2.65	0.00	20,494.74	1,850.50	108,059.47
July	0.00	0.00	0.00	153.27	25,460.82	0.00	125.89	263.15	0.00	677.80	0.00	51,892.97	2,277.22	2.35	207.87	1.40	0.00	19,431.31	1,728.82	102,222.88
August	0.00	0.00	0.00	140.45	30,459.67	0.00	168.71	55.92	0.00	122.71	0.00	56,676.19	3,671.20	0.00	320.77	3.92	0.00	20,605.62	2,373.05	114,598.21
September	0.00	0.00	0.00	158.48	27,851.54	0.00	195.96	4.21	0.00	165.84	0.00	50,675.04	4,385.25	0.81	66.96	2.42	0.00	19,089.34	2,219.36	104,815.21
Total	0.00	0.00	0.00	1,745.24	284,830.84	0.00	1,848.44	672.22	0.00	7,228.65	0.00	639,227.20	42,978.11	33.01	3,115.45	21.37	0.00	224,476.49	23,032.78	1,229,209.80
Average	0.00	0.00	0.00	145.44	23,735.90	0.00	154.04	56.02	0.00	602.39	0.00	53,268.93	3,581.51	2.75	259.62	1.78	0.00	18,706.37	1,919.40	102,434.15
Percent	0.00%	0.00%	0.00%	0.14%	23.17%	0.00%	0.15%	0.05%	0.00%	0.59%	0.00%	52.00%	3.50%	0.00%	0.25%	0.00%	0.00%	18.26%	1.87%	100.00%

FY 88/89\*

Month	Animals	Reef	Asbestos	C/D	Residue	Tires	Sludge	Direct	Fill	Furniture	Garbage	Land/Cirg.	Pest/Paint	Special	Trailers	Mulch	Trash/Other	Vegetation	Total
October	0.00	0.00	87.69	26,181.30	0.00	148.86	3.98	0.00	160.12	0.00	52,270.66	3,934.36	3.99	81.09	7.27	0.00	19,745.70	2,979.17	105,604.20
November	0.00	0.00	115.50	20,594.23	0.00	65.51	3.21	0.00	134.98	0.00	55,707.52	4,168.16	2.84	6.56	3.65	0.00	20,423.35	2,816.71	104,042.22
December	0.00	0.00	22.82	19,791.84	0.00	59.12	36.39	0.00	78.28	0.00	57,471.58	4,655.35	1.51	54.53	2.25	0.00	20,760.60	3,043.60	105,977.87
January	0.00	0.00	36.53	18,400.88	0.00	22.87	4.54	0.00	196.23	0.00	60,790.77	4,118.88	2.24	73.82	2.75	0.00	21,503.73	2,531.37	107,883.60
February	0.00	0.00	10.38	16,629.32	0.00	155.11	0.00	0.00	401.14	0.00	54,998.22	6,719.66	2.12	1.90	0.00	0.00	21,886.88	2,437.62	103,242.34
March	0.00	0.00	18.99	18,682.59	0.00	150.81	0.00	0.00	389.27	0.00	63,944.25	7,583.63	20.20	28.09	2.80	0.00	26,236.49	2,993.14	120,050.26
April	0.00	0.00	21.40	19,338.76	0.00	120.56	20.54	0.00	579.52	0.00	57,997.92	4,788.47	5.33	7.79	2.12	0.00	23,904.27	3,076.20	109,862.89
May	0.00	0.00	27.21	17,633.23	0.00	57.52	4.79	0.00	959.36	0.00	62,303.88	5,934.25	6.65	0.16	0.00	0.00	27,354.77	3,292.16	117,573.97
June	0.00	0.00	7.74	18,338.71	0.00	59.44	232.87	0.00	1,156.07	0.00	58,867.27	6,022.51	0.94	14.68	0.00	0.00	26,288.47	3,557.21	114,545.90
July	0.00	0.00	0.00	19,422.48	0.00	104.99	421.12	0.00	870.20	0.00	56,349.08	3,449.17	0.94	3,600.13	0.00	0.00	24,201.07	3,230.77	111,649.95
August	0.00	0.00	44.01	22,220.62	0.00	128.50	391.36	0.00	802.56	0.00	58,738.55	3,791.56	1.18	8.85	3.65	0.00	27,373.20	3,348.82	116,852.85
September	0.00	0.00	54.96	17,290.95	0.00	123.76	123.09	0.00	816.26	0.00	53,969.32	2,401.99	0.28	21.99	1.20	0.00	27,657.25	3,247.14	105,708.20
<b>Total</b>	<b>0.00</b>	<b>0.00</b>	<b>447.23</b>	<b>234,524.89</b>	<b>0.00</b>	<b>1,396.05</b>	<b>1,241.89</b>	<b>0.00</b>	<b>6,543.99</b>	<b>0.00</b>	<b>693,409.02</b>	<b>57,567.99</b>	<b>48.22</b>	<b>3,899.59</b>	<b>25.69</b>	<b>0.00</b>	<b>287,335.77</b>	<b>36,553.91</b>	<b>1,322,994.25</b>
<b>Average</b>	<b>0.00</b>	<b>0.00</b>	<b>37.27</b>	<b>19,543.74</b>	<b>0.00</b>	<b>116.34</b>	<b>103.49</b>	<b>0.00</b>	<b>545.33</b>	<b>0.00</b>	<b>57,784.09</b>	<b>4,797.33</b>	<b>4.02</b>	<b>324.97</b>	<b>2.14</b>	<b>0.00</b>	<b>23,944.65</b>	<b>3,046.16</b>	<b>110,249.52</b>
<b>Percent</b>	<b>0.00%</b>	<b>0.00%</b>	<b>0.03%</b>	<b>17.73%</b>	<b>0.00%</b>	<b>0.11%</b>	<b>0.09%</b>	<b>0.00%</b>	<b>0.49%</b>	<b>0.00%</b>	<b>52.41%</b>	<b>4.35%</b>	<b>0.00%</b>	<b>0.29%</b>	<b>0.00%</b>	<b>0.00%</b>	<b>21.72%</b>	<b>2.76%</b>	<b>100.00%</b>

FY 89/90\*

Month	Animals	Reef	Asbestos	C/D	Residue	Tires	Sludge	Direct	Fill	Furniture	Garbage	Land/Cirg.	Pest/Paint	Special	Trailers	Mulch	Trash/Other	Vegetation	Total
October	0.00	0.00	34.55	15,313.72	0.00	66.78	9.28	0.00	478.88	0.00	56,519.68	2,248.03	0.71	2.55	2.00	0.00	24,348.26	2,919.45	101,943.88
November	0.00	0.00	6.85	14,758.80	0.00	188.91	9.31	0.00	498.72	0.00	57,318.34	1,997.30	0.01	0.00	0.00	0.00	22,957.82	2,555.62	100,291.68
December	0.00	0.00	13.63	13,037.13	0.00	190.40	2.62	0.00	455.70	0.00	56,619.71	1,835.76	0.80	23.66	0.00	0.00	20,140.62	807.94	93,127.97
January	0.00	0.00	63.78	11,003.99	0.00	334.94	5.72	0.00	544.58	0.00	66,560.11	1,929.79	0.00	5.82	3.14	0.00	28,276.96	2,658.09	111,386.91
February	0.00	0.00	107.26	11,903.85	0.00	132.15	5.32	0.00	332.27	0.00	45,456.98	2,467.67	1.82	364.42	1.50	0.00	23,693.25	2,408.02	86,874.51
March	0.00	0.00	121.91	14,178.32	0.00	117.73	13.22	0.00	223.16	0.00	61,876.38	2,280.23	1.15	96.84	5.87	0.00	24,046.59	2,418.85	105,380.24
April	0.00	0.00	70.06	8,975.38	0.00	143.65	92.00	0.00	283.16	0.00	59,283.07	1,999.96	1.57	28.23	1.25	0.00	21,566.82	2,035.72	94,480.87
May	0.00	175.80	95.69	9,695.40	0.00	184.30	1.01	0.00	329.18	0.00	59,631.02	1,758.35	0.06	3.38	6.61	0.00	23,251.28	1,920.19	97,052.27
June	0.00	728.91	53.07	9,083.53	0.00	92.51	6.20	0.00	750.67	0.00	56,762.99	2,060.84	0.17	52.03	8.21	0.00	23,143.72	1,720.30	94,463.15
July	0.00	219.05	37.98	9,191.74	0.00	237.13	3.03	0.00	406.45	0.00	56,961.91	2,328.84	0.00	9.94	0.00	0.00	24,150.09	1,915.79	95,461.94
August	0.00	0.00	77.17	8,960.82	0.00	339.17	8.47	0.00	356.32	0.00	57,663.01	1,715.79	0.13	14.82	7.28	0.00	26,692.09	1,814.19	97,649.26
September	0.00	14.29	61.25	7,838.11	0.00	151.48	51.45	0.00	348.85	0.00	51,194.57	1,042.39	0.00	118.67	5.12	0.00	20,909.52	1,605.17	83,340.87
<b>Total</b>	<b>0.00</b>	<b>1,138.05</b>	<b>743.20</b>	<b>133,940.77</b>	<b>0.00</b>	<b>2,179.15</b>	<b>207.63</b>	<b>0.00</b>	<b>5,007.94</b>	<b>0.00</b>	<b>685,847.77</b>	<b>23,664.95</b>	<b>6.42</b>	<b>720.36</b>	<b>40.98</b>	<b>0.00</b>	<b>283,177.01</b>	<b>24,779.33</b>	<b>1,161,453.56</b>
<b>Average</b>	<b>0.00</b>	<b>94.84</b>	<b>61.93</b>	<b>11,161.73</b>	<b>0.00</b>	<b>181.60</b>	<b>17.30</b>	<b>0.00</b>	<b>417.33</b>	<b>0.00</b>	<b>57,153.98</b>	<b>1,972.08</b>	<b>0.54</b>	<b>60.03</b>	<b>3.42</b>	<b>0.00</b>	<b>23,598.08</b>	<b>2,064.94</b>	<b>96,877.80</b>
<b>Percent</b>	<b>0.00%</b>	<b>0.10%</b>	<b>0.06%</b>	<b>11.53%</b>	<b>0.00%</b>	<b>0.19%</b>	<b>0.02%</b>	<b>0.00%</b>	<b>0.43%</b>	<b>0.00%</b>	<b>59.05%</b>	<b>2.04%</b>	<b>0.00%</b>	<b>0.06%</b>	<b>0.00%</b>	<b>0.00%</b>	<b>24.38%</b>	<b>2.13%</b>	<b>100.00%</b>

FY 90/91\*

Month	Animals	Reef	Asbestos	C/D	Residue	Tires	Sludge	Direct	Fill	Furniture	Garbage	Land/Cirg.	Pest/Paint	Special	Trailers	Mulch	Trash/Other	Vegetation	Total
October	0.00	81.97	47.00	15,023.85	0.00	155.57	2,944.28	2.79	2,282.29	23.19	60,219.29	2,638.54	0.62	97.73	0.00	0.00	16,930.47	2,367.97	102,815.55
November	0.00	152.42	112.59	12,342.72	0.00	123.36	2,921.79	333.82	914.45	20.37	56,903.50	1,195.99	0.54	0.96	1.30	0.00	13,911.55	1,876.25	90,811.61
December	0.00	551.38	88.92	8,354.20	0.00	106.59	3,467.84	18.00	615.22	34.28	58,938.83	1,833.42	1.44	22.60	4.11	0.00	12,264.98	1,548.83	87,870.64
January	0.00	162.13	31.28	9,378.26	0.00	197.17	3,676.14	405.14	619.44	28.88	65,854.11	1,284.45	2.29	27.50	7.10	0.00	14,351.88	1,743.10	97,768.87
February	0.00	110.51	50.75	10,874.66	0.00	173.16	3,591.33	501.01	650.82	19.63	57,626.91	1,519.55	0.89	43.23	0.00	0.00	12,742.73	1,741.77	89,646.95
March	0.00	99.10	120.83	11,729.20	0.00	170.90	19.29	523.50	730.80	18.10	61,303.55	2,064.64	0.51	15.54	2.40	0.00	14,078.65	2,060.76	92,937.77
April	0.00	38.37	24.84	10,741.84	0.00	173.18	6,368.85	264.17	480.14	24.89	63,033.24	2,393.04	0.22	6.48	0.00	0.00	14,569.79	2,130.92	100,249.97
May	0.00	18.62	10.70	10,753.04	0.00	513.74	4,164.88	217.91	760.23	25.62	59,583.95	2,370.90	0.25	7.68	0.00	0.00	14,371.58	2,330.96	95,130.05
June	0.00	49.02	55.42	10,355.46	0.00	975.99	3,713.10	85.43	760.24	24.41	52,543.94	748.90	0.07	19.30	0.00	0.00	13,240.29	2,428.46	85,000.03
July	0.00	17.41	75.77	10,988.06	0.00	275.30	2,332.08	858.40	344.48	17.92	57,463.19	1,312.80	107.00	6.70	0.00	0.00	15,384.84	2,501.05	91,683.00
August	0.00	6.31	160.56	9,797.51	0.00	1,365.18	2,732.13	894.21	483.60	8.14	53,990.34	2,419.23	0.13	7.33	0.00	1,612.39	13,291.99	2,852.12	89,421.16
September	0.00	12.34	69.50	9,912.47	0.00	236.89	3,607.27	269.53	551.36	14.34	52,055.03	8,429.70	0.70	20.06	0.00	2,294.24	12,662.70	2,907.03	93,043.16
<b>Total</b>	<b>0.00</b>	<b>1,299.58</b>	<b>848.16</b>	<b>130,249.25</b>	<b>0.00</b>	<b>4,467.03</b>	<b>39,558.98</b>	<b>4,373.91</b>	<b>9,193.07</b>	<b>259.77</b>	<b>699,155.88</b>	<b>28,211.16</b>	<b>114.66</b>	<b>275.11</b>	<b>14.91</b>	<b>3,906.63</b>	<b>167,801.44</b>	<b>26,289.22</b>	<b>1,116,378.76</b>
<b>Average</b>	<b>0.00</b>	<b>108.30</b>	<b>70.68</b>	<b>10,854.10</b>	<b>0.00</b>	<b>372.25</b>	<b>3,296.58</b>	<b>364.49</b>	<b>766.09</b>	<b>21.65</b>	<b>58,292.99</b>	<b>2,350.93</b>	<b>9.56</b>	<b>22.93</b>	<b>1.24</b>	<b>325.55</b>	<b>13,983.45</b>	<b>2,190.77</b>	<b>93,031.56</b>
<b>Percent</b>	<b>0.00%</b>	<b>0.12%</b>	<b>0.08%</b>	<b>11.67%</b>	<b>0.00%</b>	<b>0.40%</b>	<b>3.54%</b>	<b>0.39%</b>	<b>0.82%</b>	<b>0.02%</b>	<b>62.66%</b>	<b>2.53%</b>	<b>0.01%</b>	<b>0.02%</b>	<b>0.00%</b>	<b>0.35%</b>	<b>15.03%</b>	<b>2.35%</b>	<b>100.00%</b>

FY 91/92\*

Month	Animals	Reef	Asbestos	C/D	Residue	Tires	Sludge	Direct	Fill	Furniture	Garbage	Land/Cirg.	Pest/Paint	Special	Trailers	Mulch	Trash/Other	Vegetation	Total
October	0.00	97.97	60.44	14,291.72	0.00	368.07	5,653.25	126.68	633.89	11.74	59,194.73	5,611.94	0.33	13.20	8.08	3,360.38	17,724.19	3,038.68	110,195.28
November	0.00	50.14	31.27	11,422.61	0.00	203.73	5,882.20	348.30	402.53	5.14	55,735.10	3,220.66	0.46	4.19	0.00	585.82	15,815.25	2,392.27	95,899.67
December	0.00	125.20	207.95	10,238.59	0.00	305.73	4,621.20	93.86	302.03	4.28	61,957.35	1,891.35	0.49	777.78	0.00	39.12	14,068.06	2,606.02	97,239.00
January	0.00	74.80	247.83	10,700.41	0.00	203.96	6,149.55	700.52	556.79	9.76	61,899.91	3,126.39	1.33	42.50	0.00	49.29	15,507.89	2,327.81	101,598.74
February	0.00	47.65	50.30	9,091.28	0.00	261.68	5,901.09	907.57	819.70	8.08	57,714.58	4,371.96	0.57	16.10	6.92	116.04	14,135.61	1,964.27	95,413.40
March	0.00	99.03	88.50	8,953.63	0.00	329.54	5,885.62	787.74	517.66	5.45	62,950.66	1,691.59	1.07	15.87	0.00	140.69	14,994.37	2,391.42	98,852.84
April	0.00	172.15	61.54	9,295.16	0.00	342.67	5,403.70	663.97	481.84	3.65	59,248.00	1,754.76	2.12	12.23	0.00	843.81	14,924.16	2,368.89	95,578.65
May	0.00	800.29	77.87	8,078.46	0.00	333.76	6,094.16	877.36	598.91	4.21	53,686.53	1,533.65	0.48	8.81	0.00	827.11	14,408.37	2,337.96	89,356.09
June	0.00	25.81	86.78	8,445.59	0.00	534.43	3,918.78	877.36	1,154.30	5.59	58,559.67	1,040.53	5.71	21.28	0.00	1,177.30	16,482.16	2,717.63	95,057.49
July	0.00	127.42	105.47	10,180.89	0.00	426.52	3,572.38	638.21	616.49	4.36	53,841.19	1,533.45	0.00	29.84	4.94	1,120.77	17,079.69	2,597.87	91,879.91
August	0.00	25.72	30.74	9,716.42	0.00	438.89	3,357.42	631.90	682.15	15.04	53,888.20	1,336.98	0.17	17.20	0.00	983.06	14,844.67	3,157.92	88,926.49
September	0.00	148.34	43.33	9,364.14	0.00	506.17	4,205.66	562.92	783.66	4.54	54,287.71	1,312.58	1.45	40.36	5.49	613.00	16,212.91	3,962.62	92,054.87
<b>Total</b>	<b>0.00</b>	<b>1,794.52</b>	<b>1,092.02</b>	<b>119,778.89</b>	<b>0.00</b>	<b>4,255.15</b>	<b>60,645.01</b>	<b>6,904.55</b>	<b>7,549.95</b>	<b>81.84</b>	<b>692,763.63</b>	<b>28,425.82</b>	<b>14.18</b>	<b>999.36</b>	<b>25.43</b>	<b>9,856.39</b>	<b>185,997.33</b>	<b>31,863.36</b>	<b>1,152,047.42</b>
<b>Average</b>	<b>0.00</b>	<b>149.54</b>	<b>91.00</b>	<b>9,981.57</b>	<b>0.00</b>	<b>354.60</b>	<b>5,053.75</b>	<b>575.38</b>	<b>629.16</b>	<b>6.82</b>	<b>57,730.30</b>	<b>2,368.82</b>	<b>1.18</b>	<b>83.28</b>	<b>2.12</b>	<b>821.37</b>	<b>15,499.78</b>	<b>2,655.28</b>	<b>96,003.95</b>
<b>Percent</b>	<b>0.00%</b>	<b>0.16%</b>	<b>0.09%</b>	<b>10.40%</b>	<b>0.00%</b>	<b>0.37%</b>	<b>5.26%</b>	<b>0.60%</b>	<b>0.66%</b>	<b>0.01%</b>	<b>60.13%</b>	<b>2.47%</b>	<b>0.00%</b>	<b>0.09%</b>	<b>0.00%</b>	<b>0.86%</b>	<b>16.14%</b>	<b>2.77%</b>	<b>100.00%</b>

FY 92/93

Month	Animals	Reef	Asbestos	C/D	Residue	Tires	Sludge	Direct	Fill	Furniture	Garbage	Land/Cirg.	Pest/Paint	Special	Trailers	Mulch	Trash/Other	Vegetation	Total
October	0.00	77.35	14.38	10,903.42	0.00	355.68	3,533.10	321.79	376.56	3.01	52,221.19	901.66	0.12	4.19	8.19	220.34	13,869.03	5,002.03	87,812.04
November	0.00	360.79	27.92	8,825.62	0.00	394.90	2,549.39	428.23	302.53	1.50	55,468.68	561.06	0.45	21.22	0.00	2,157.91	11,487.47	3,756.22	86,343.89
December	0.00	331.07	27.28	9,499.07	0.00	552.32	5,181.17	310.89	444.92	14.05	58,058.88	2,300.00	1.21	19.42	0.00	5,062.81	13,145.16	3,909.95	98,858.20
January	0.00	173.61	40.13	9,114.27	0.00	434.67	6,400.80	186.23	341.62	8.81	60,202.58	1,050.70	0.71	41.92	3.63	4,579.96	12,951.50	4,215.28	99,346.22
February	0.00	14.40	23.15	9,584.71	0.00	478.89	5,723.80	152.05	617.92	2.32	54,269.58	735.62	0.70	0.54	53.51	3,976.35	12,382.16	4,007.23	92,022.93
March	0.00	75.68	110.47	8,841.61	0.00	530.04	6,273.66	121.46	491.57	7.54	66,710.54	2,392.36	0.98	336.72	0.00	7,070.72	16,866.14	8,198.21	118,027.70
April	0.00	34.12	76.43	9,944.01	0.00	383.12	5,193.91	79.52	56.98	9.32	60,680.25	2,131.30	1.27	63.35	11.05	5,985.82	16,724.81	6,805.81	107,981.07
May	0.00	227.65	42.26	9,593.94	0.00	486.49	4,664.85	78.87	0.00	3.83	54,408.59	1,060.04	0.35	34.43	0.00	4,944.42	14,048.62	5,107.11	94,701.45
June	0.00	564.37	5.13	9,488.19	0.00	709.25	2,861.08	123.27	0.00	5.47	56,938.35	478.75	0.00	0.86	2.47	4,029.72	17,305.44	5,757.86	98,270.21
July	0.00	0.00	22.51	8,472.31	0.00	495.69	2,499.41	83.05	0.00	11.07	53,867.84	548.89	0.00	6.05	0.00	3,854.97	15,397.63	4,623.59	89,881.01
August	0.00	0.00	14.73	9,564.47	0.00	480.30	2,210.00	73.47	0.00	6.02	55,685.09	1,060.26	0.00	10.20	2.14	3,433.70	16,182.33	6,013.31	94,736.02
September	0.00	0.00	19.50	9,200.25	0.00	1,969.37	1,642.74	125.07	0.00	8.33	54,527.79	1,013.15	0.00	100.88	14.12	4,910.03	15,750.49	6,438.13	95,719.85
<b>Total</b>	<b>0.00</b>	<b>1,859.04</b>	<b>423.89</b>	<b>113,031.87</b>	<b>0.00</b>	<b>7,270.72</b>	<b>48,733.71</b>	<b>2,083.90</b>	<b>2,632.10</b>	<b>81.27</b>	<b>683,038.36</b>	<b>14,231.79</b>	<b>5.79</b>	<b>639.78</b>	<b>95.11</b>	<b>50,226.75</b>	<b>175,710.78</b>	<b>63,634.73</b>	<b>1,163,700.59</b>
<b>Average</b>	<b>0.00</b>	<b>154.92</b>	<b>35.32</b>	<b>9,419.32</b>	<b>0.00</b>	<b>605.89</b>	<b>4,061.14</b>	<b>173.66</b>	<b>219.34</b>	<b>6.77</b>	<b>56,919.95</b>	<b>1,185.98</b>	<b>0.48</b>	<b>53.32</b>	<b>7.93</b>	<b>4,185.56</b>	<b>14,642.57</b>	<b>5,302.89</b>	<b>96,975.05</b>
<b>Percent</b>	<b>0.00%</b>	<b>0.16%</b>	<b>0.04%</b>	<b>9.71%</b>	<b>0.00%</b>	<b>0.62%</b>	<b>4.19%</b>	<b>0.18%</b>	<b>0.23%</b>	<b>0.01%</b>	<b>58.70%</b>	<b>1.22%</b>	<b>0.00%</b>	<b>0.05%</b>	<b>0.01%</b>	<b>4.32%</b>	<b>15.10%</b>	<b>5.47%</b>	<b>100.00%</b>

FY 93/94

Month	Animals	Reef	Asbestos	C/D	Residue	Tires	Sludge	Direct	Fill	Furniture	Garbage	Land/Cirg.	Pest/Paint	Special	Trailers	Mulch	Trash/Other	Vegetation	Total
October	0.00	0.00	15.93	10,898.23	0.00	346.29	2,527.73	326.60	0.00	7.53	57,951.42	921.08	0.00	0.00	0.00	36.45	13,920.78	5,952.24	92,904.28
November	0.00	0.00	9.15	9,295.81	0.00	236.24	2,049.64	259.28	0.00	4.24	62,388.65	947.14	1.04	26.25	4.38	126.35	13,600.95	5,891.84	94,640.96
December	0.00	0.00	7.92	8,534.30	0.00	316.63	3,862.78	214.95	0.00	12.35	63,047.82	535.88	0.00	5.46	2.63	36.00	13,519.71	5,135.75	95,232.18
January	0.00	0.00	0.35	6,276.81	0.00	236.84	3,665.13	96.45	0.00	7.75	65,347.52	1,754.17	0.00	1.90	0.00	105.57	14,138.58	5,471.68	97,105.25
February	0.00	0.00	2.00	6,307.13	0.00	253.80	3,296.75	141.71	4.59	5.88	62,027.92	1,343.54	0.00	5.35	0.00	48.83	12,715.75	5,618.47	91,771.72
March	0.00	0.00	2.80	9,042.00	0.00	284.63	4,961.57	270.71	0.00	7.69	67,724.24	1,384.55	0.00	18.64	12.20	104.71	17,727.87	7,680.00	109,221.61
April	0.00	0.00	0.00	6,296.71	0.00	423.56	3,881.46	288.96	461.68	7.76	62,891.49	1,738.27	0.00	0.11	0.00	51.21	16,596.09	7,319.86	99,957.16
May	0.00	0.00	0.00	6,896.98	0.00	377.93	4,172.70	190.47	3,080.32	3.12	60,920.42	742.46	0.00	2.22	0.00	67.42	17,328.07	8,672.39	102,454.50
June	0.00	0.00	2.02	5,636.53	0.00	221.16	3,419.74	138.00	3,685.28	6.58	61,485.20	1,400.25	0.00	2.69	5.77	48.30	16,592.79	11,183.68	103,827.99
July	0.00	0.00	0.21	5,197.67	0.00	208.80	3,820.97	132.24	6,616.33	1.12	53,447.76	1,223.95	0.00	5.37	0.00	64.41	14,684.40	9,794.67	95,197.90
August	0.00	0.00	10.50	5,050.35	0.00	494.78	4,393.45	150.32	6,129.79	6.60	60,436.48	2,871.95	0.00	0.88	0.00	33.21	15,023.95	12,306.78	106,909.04
September	0.00	0.00	1.82	4,376.04	0.00	200.69	4,016.09	153.86	6,411.05	7.45	56,355.67	900.89	0.09	0.89	0.92	37.79	15,147.24	11,711.81	99,322.30
<b>Total</b>	<b>0.00</b>	<b>0.00</b>	<b>52.70</b>	<b>83,808.56</b>	<b>0.00</b>	<b>3,601.35</b>	<b>44,068.01</b>	<b>2,363.55</b>	<b>26,391.54</b>	<b>78.07</b>	<b>734,024.59</b>	<b>15,764.13</b>	<b>1.13</b>	<b>69.76</b>	<b>25.90</b>	<b>760.25</b>	<b>180,996.18</b>	<b>96,539.17</b>	<b>1,188,544.89</b>
<b>Average</b>	<b>0.00</b>	<b>0.00</b>	<b>4.39</b>	<b>6,984.05</b>	<b>0.00</b>	<b>300.11</b>	<b>3,672.33</b>	<b>196.96</b>	<b>2,199.30</b>	<b>6.51</b>	<b>61,168.72</b>	<b>1,313.68</b>	<b>0.09</b>	<b>5.81</b>	<b>2.16</b>	<b>63.35</b>	<b>15,083.02</b>	<b>8,044.93</b>	<b>99,045.41</b>
<b>Percent</b>	<b>0.00%</b>	<b>0.00%</b>	<b>0.00%</b>	<b>7.05%</b>	<b>0.00%</b>	<b>0.30%</b>	<b>3.71%</b>	<b>0.20%</b>	<b>2.22%</b>	<b>0.01%</b>	<b>61.76%</b>	<b>1.33%</b>	<b>0.00%</b>	<b>0.01%</b>	<b>0.00%</b>	<b>0.06%</b>	<b>15.23%</b>	<b>8.12%</b>	<b>100.00%</b>

**FY 94/95**

Month	Animals	Reef	Asbestos	C/D	Residue	Tires	Sludge	Direct	Fill	Furniture	Garbage	Land/Cirg.	Pest/Paint	Special	Trailers	Mulch	Trash/Other	Vegetation	Total
October	0.00	0.00	0.00	5,613.06	0.00	202.61	4,639.19	214.12	9,027.82	10.12	57,408.68	1,606.69	0.00	8.08	0.00	19.50	13,852.18	12,080.84	104,682.89
November	0.00	0.00	1.97	4,484.08	0.00	164.84	4,102.55	204.08	6,342.22	5.18	63,172.61	1,175.89	0.00	12.21	13.24	29.66	14,143.77	13,141.75	106,994.05
December	0.00	0.00	0.00	5,763.37	0.00	191.33	5,677.96	206.60	833.47	13.07	67,147.84	818.11	0.00	3.14	0.00	11.59	14,621.54	12,004.79	107,292.81
January	0.00	0.00	0.00	7,631.11	0.00	225.85	6,158.41	238.23	1,607.99	2.74	64,057.30	1,579.91	0.00	0.00	0.00	10.81	13,118.35	11,430.76	106,061.46
February	0.00	0.00	4.65	5,355.27	0.00	463.72	5,417.67	181.67	1,416.42	2.85	57,401.18	2,525.08	0.00	7.80	0.00	46.08	10,891.54	10,027.76	93,741.69
March	0.00	0.00	4.10	7,823.84	0.00	800.66	6,077.03	235.31	2,509.41	1.49	64,831.59	7,332.05	0.00	0.00	13.25	23.37	13,259.57	12,993.26	115,904.93
April	0.00	0.00	10.51	6,420.77	0.00	323.54	4,883.70	220.77	2,379.72	4.27	57,667.76	2,796.72	0.00	0.00	0.00	23.90	12,583.10	11,631.56	98,946.32
May	0.00	0.00	1.13	7,308.66	0.00	148.32	5,265.93	237.87	3,901.20	2.11	61,356.02	3,000.30	0.00	8.36	0.00	12.43	13,444.69	12,966.37	107,653.39
June	0.00	0.00	1.93	5,473.81	0.00	191.70	4,361.86	179.77	3,357.07	3.09	59,899.47	1,774.45	0.00	1.69	0.00	18.11	13,712.41	13,554.72	102,530.08
July	0.00	0.00	0.73	5,676.56	0.00	122.51	4,679.20	156.66	2,282.42	0.20	56,095.61	1,688.89	0.00	21.63	0.00	22.30	13,850.54	11,846.61	96,441.86
August	0.00	0.00	0.43	6,887.81	0.00	166.29	4,063.45	334.92	2,270.35	2.15	60,087.61	2,989.14	0.19	38.80	1.66	23.92	12,726.66	11,365.38	100,958.76
September	0.00	0.00	2.20	8,365.02	0.00	149.53	4,019.46	503.70	1,171.57	5.50	55,633.63	2,684.50	0.09	0.00	0.00	288.87	11,947.97	12,312.68	97,084.72
<b>Total</b>	<b>0.00</b>	<b>0.00</b>	<b>27.65</b>	<b>76,803.36</b>	<b>0.00</b>	<b>3,150.90</b>	<b>59,346.41</b>	<b>2,913.70</b>	<b>37,099.66</b>	<b>52.77</b>	<b>724,759.30</b>	<b>29,969.73</b>	<b>0.28</b>	<b>101.71</b>	<b>28.15</b>	<b>530.54</b>	<b>158,152.32</b>	<b>145,356.48</b>	<b>1,238,292.96</b>
<b>Average</b>	<b>0.00</b>	<b>0.00</b>	<b>2.30</b>	<b>6,400.28</b>	<b>0.00</b>	<b>262.58</b>	<b>4,945.53</b>	<b>242.81</b>	<b>3,091.64</b>	<b>4.40</b>	<b>60,396.61</b>	<b>2,497.48</b>	<b>0.02</b>	<b>8.48</b>	<b>2.35</b>	<b>44.21</b>	<b>13,179.36</b>	<b>12,113.04</b>	<b>103,191.08</b>
<b>Percent</b>	<b>0.00%</b>	<b>0.00%</b>	<b>0.00%</b>	<b>6.20%</b>	<b>0.00%</b>	<b>0.25%</b>	<b>4.79%</b>	<b>0.24%</b>	<b>3.00%</b>	<b>0.00%</b>	<b>58.53%</b>	<b>2.42%</b>	<b>0.00%</b>	<b>0.01%</b>	<b>0.00%</b>	<b>0.04%</b>	<b>12.77%</b>	<b>11.74%</b>	<b>100.00%</b>

**FY 95/96**

Month	Animals	Reef	Asbestos	C/D	Residue	Tires	Sludge	Direct	Fill	Furn.	Garbage	Land/Cirg.	Pest/Paint	Special	Trailers	Mulch	Trash/Other	Vegetation	Total
October	0.00	0.00	5.49	8,306.43	0.00	160.58	3,529.75	639.43	1,103.24	0.30	62,568.40	713.09	0.00	2.48	0.00	109.85	14,031.60	10,258.85	101,419.49
November	0.00	0.00	0.47	7,577.50	0.00	165.44	3,848.98	151.54	1,170.79	5.80	59,920.30	1,236.95	0.00	0.51	0.00	30.75	11,877.69	9,065.06	95,061.78
December	0.00	0.00	0.09	6,486.83	0.00	146.73	4,637.98	196.79	1,110.82	4.64	60,711.75	1,630.56	0.00	6.21	0.00	23.32	11,756.81	6,828.18	93,540.71
January	0.00	0.00	0.00	8,199.45	0.00	164.29	5,781.94	355.70	1,086.16	4.97	67,707.15	30.16	0.00	0.00	0.00	49.41	14,589.86	6,771.91	104,741.00
February	0.00	0.00	0.19	8,921.47	0.00	315.23	6,827.95	216.42	1,240.79	2.55	60,711.78	0.00	0.00	1.75	0.00	6.85	12,744.83	6,960.11	97,949.92
March	0.00	0.00	0.00	9,752.63	0.00	145.62	6,749.53	212.68	1,724.66	5.14	64,177.95	0.00	0.00	1.92	0.00	7.23	12,201.36	7,431.40	102,410.12
April	0.00	0.00	0.00	11,704.69	0.00	273.41	6,566.69	285.33	1,489.64	2.62	64,890.16	0.00	0.00	8.26	0.00	21.58	13,821.35	7,629.74	106,699.47
May	0.00	0.00	0.37	9,956.33	0.00	196.96	5,977.02	253.66	1,165.88	2.70	64,875.94	0.00	0.00	0.00	3.41	15.31	14,842.38	11,365.54	108,455.50
June	0.00	0.00	0.22	9,174.17	0.00	65.15	4,261.28	142.95	1,704.25	4.08	58,741.40	0.00	0.00	1.77	0.00	62.75	12,867.57	11,064.11	98,089.70
July	0.00	0.00	0.00	9,420.41	0.00	63.50	3,693.83	166.17	4,162.89	4.62	61,493.70	0.00	0.00	1.11	4.59	9.05	14,742.65	10,223.82	103,986.34
August	0.00	0.00	0.03	9,586.82	0.00	152.44	4,174.49	162.07	3,233.39	6.98	59,474.35	0.00	0.00	0.00	0.00	1.16	13,345.50	10,894.01	101,031.24
September	0.00	0.00	2.35	9,021.73	0.00	83.17	3,486.62	324.63	2,771.44	2.51	57,535.10	0.00	0.00	0.00	0.00	5.58	13,330.75	11,579.33	98,143.21
<b>Total</b>	<b>0.00</b>	<b>0.00</b>	<b>9.21</b>	<b>108,108.46</b>	<b>0.00</b>	<b>1,922.52</b>	<b>59,536.06</b>	<b>3,107.37</b>	<b>21,963.95</b>	<b>46.91</b>	<b>742,807.98</b>	<b>3,610.76</b>	<b>0.00</b>	<b>24.01</b>	<b>8.00</b>	<b>342.84</b>	<b>159,958.35</b>	<b>110,072.06</b>	<b>1,211,518.48</b>
<b>Average</b>	<b>0.00</b>	<b>0.00</b>	<b>0.77</b>	<b>9,009.04</b>	<b>0.00</b>	<b>160.21</b>	<b>4,961.34</b>	<b>258.95</b>	<b>1,830.33</b>	<b>3.91</b>	<b>61,900.67</b>	<b>300.90</b>	<b>0.00</b>	<b>2.00</b>	<b>0.67</b>	<b>28.57</b>	<b>13,329.86</b>	<b>9,172.67</b>	<b>100,959.87</b>
<b>Percent</b>	<b>0.00%</b>	<b>0.00%</b>	<b>0.00%</b>	<b>8.92%</b>	<b>0.00%</b>	<b>0.16%</b>	<b>4.91%</b>	<b>0.26%</b>	<b>1.81%</b>	<b>0.00%</b>	<b>61.31%</b>	<b>0.30%</b>	<b>0.00%</b>	<b>0.00%</b>	<b>0.00%</b>	<b>0.03%</b>	<b>13.20%</b>	<b>9.09%</b>	<b>100.00%</b>

**FY 96/97**

Month	Animals	Reef	Asbestos	C/D	Residue	Tires	Sludge	Direct	Fill	Furn.	Garbage	Land/Cirg.	Pest/Paint	Special	Trailers	Mulch	Trash/Other	Vegetation	Total
October	24.08	0.00	0.00	4,899.37	2,604.72	74.95	5,092.65	299.32	3,420.44	9.87	63,684.82	0.00	0.00	0.30	0.00	25.27	12,500.11	12,159.05	104,794.95
November	25.16	0.00	0.00	3,735.92	3,700.11	64.80	4,816.39	251.30	2,871.07	9.65	60,493.45	0.00	0.00	0.00	1.23	74.90	9,107.87	10,911.88	96,063.73
December	32.73	0.00	0.00	3,539.05	3,364.94	121.22	6,343.78	253.38	2,370.37	6.20	68,224.69	0.00	0.00	0.00	0.00	4.25	9,110.56	8,784.40	102,155.57
January	30.40	0.00	0.00	4,926.70	2,674.21	105.04	7,023.80	359.02	1,726.88	5.61	69,890.70	0.00	0.00	0.00	0.00	0.00	11,397.53	9,101.15	107,241.04
February	38.48	0.00	0.18	5,586.94	2,458.25	137.71	5,184.91	143.22	1,943.51	4.82	64,004.73	0.00	0.00	0.91	0.00	18.64	10,277.50	8,723.38	98,523.18
March	25.11	0.00	0.05	3,689.92	2,483.20	66.34	5,759.53	187.09	853.66	5.71	69,172.09	0.00	0.00	0.00	0.00	15.21	10,792.54	10,725.87	103,776.32
April	29.80	0.00	0.54	3,868.09	2,559.37	154.13	4,690.37	237.72	1,172.69	4.97	67,967.76	0.00	0.00	0.00	0.00	23.60	11,789.09	10,722.18	103,220.31
May	24.29	0.00	1.29	3,551.83	3,433.44	62.48	4,838.42	154.68	1,295.94	4.71	66,075.02	0.00	0.00	0.00	1.95	32.44	11,359.21	11,990.90	102,226.80
June	24.27	0.00	0.00	4,166.48	3,215.69	109.49	3,227.39	185.34	1,808.05	5.57	65,657.00	0.00	0.00	0.00	11.11	45.31	12,539.44	14,122.95	105,118.09
July	27.17	0.00	6.29	4,738.95	3,393.17	106.50	3,323.82	143.17	779.05	7.73	62,498.40	0.00	0.00	1.97	3.38	268.59	16,303.78	15,178.51	106,777.48
August	24.29	0.00	0.00	5,565.27	3,561.30	174.93	3,555.21	155.23	1,135.23	6.11	61,959.68	0.00	0.00	0.00	0.00	343.32	18,084.09	14,138.26	108,702.92
September	22.07	0.00	0.00	4,599.54	2,210.41	97.91	4,044.28	119.86	174.06	4.63	63,486.23	0.00	0.00	0.00	0.00	337.57	12,913.16	15,228.09	103,137.81
<b>Total</b>	<b>327.85</b>	<b>0.00</b>	<b>8.35</b>	<b>52,868.06</b>	<b>35,658.81</b>	<b>1,275.50</b>	<b>57,900.55</b>	<b>2,489.33</b>	<b>19,550.95</b>	<b>75.58</b>	<b>783,111.57</b>	<b>0.00</b>	<b>0.00</b>	<b>3.18</b>	<b>17.67</b>	<b>1,189.10</b>	<b>146,074.88</b>	<b>141,186.62</b>	<b>1,241,738.00</b>
<b>Average</b>	<b>27.32</b>	<b>0.00</b>	<b>0.70</b>	<b>4,405.67</b>	<b>2,971.57</b>	<b>106.29</b>	<b>4,825.05</b>	<b>207.44</b>	<b>1,629.25</b>	<b>6.30</b>	<b>65,259.30</b>	<b>0.00</b>	<b>0.00</b>	<b>0.27</b>	<b>1.47</b>	<b>99.09</b>	<b>12,172.91</b>	<b>11,765.55</b>	<b>103,274.95</b>
<b>Percent</b>	<b>0.03%</b>	<b>0.00%</b>	<b>0.00%</b>	<b>4.27%</b>	<b>2.88%</b>	<b>0.10%</b>	<b>4.67%</b>	<b>0.20%</b>	<b>1.58%</b>	<b>0.01%</b>	<b>63.19%</b>	<b>0.00%</b>	<b>0.00%</b>	<b>0.00%</b>	<b>0.00%</b>	<b>0.10%</b>	<b>11.79%</b>	<b>11.39%</b>	<b>100.00%</b>

## FY 97/98

Month	Animals	Reef	Asbestos	C/D	Residue	Tires	Sludge	Direct	Fill	Furn.	Garbage	Land/Cirg.	Pest/Paint	Special	Trailers	Mulch	Trash/Other	Vegetation	Total
October	30.03	0.00	3.58	5,117.25	886.16	118.56	4,658.74	125.88	1.16	6.11	63,954.20	0.00	0.00	0.00	4.26	1,371.62	14,388.30	16,310.09	106,975.94
November	29.31	0.00	0.13	3,383.36	1,101.40	106.00	4,756.44	153.59	1,512.54	6.97	61,556.38	0.00	0.00	0.00	5.99	2,867.70	15,056.04	14,171.71	104,707.56
December	29.28	0.00	0.01	3,556.46	3,205.38	210.00	5,623.69	166.24	2,436.99	4.43	76,370.40	0.00	0.00	0.00	0.00	933.89	26,734.87	12,500.23	131,771.87
January	30.08	0.00	0.00	3,846.19	1,777.57	162.35	5,356.55	238.28	1,080.95	9.48	73,860.62	0.00	0.00	1.33	2.91	1,782.50	18,028.13	13,811.48	119,988.42
February	36.99	0.00	0.00	4,012.11	1,358.45	188.23	4,859.63	473.34	549.54	4.75	68,785.89	0.00	0.00	0.00	0.00	404.81	13,510.78	15,576.43	109,760.95
March	36.57	0.00	0.54	4,359.51	1,040.02	148.89	5,910.31	290.97	758.58	8.37	74,819.39	0.00	20.75	0.00	0.00	430.69	13,989.24	15,516.77	117,330.60
April	23.67	0.00	0.52	4,552.77	1,130.97	244.69	5,662.41	221.24	985.41	6.69	69,318.43	0.00	14.35	12.05	0.00	249.50	15,335.40	15,697.53	113,455.63
May	28.53	0.00	0.00	5,992.04	1,139.68	131.46	4,937.82	123.83	1,681.89	7.87	65,843.07	0.00	14.34	8.73	0.00	646.33	15,492.87	15,707.62	111,756.08
June	24.76	0.00	0.00	5,364.35	1,013.57	139.84	4,872.86	172.25	3,369.46	4.13	67,419.02	0.00	7.95	0.97	2.42	542.72	13,737.85	16,116.31	112,788.46
July	23.03	0.00	0.18	5,437.23	785.44	133.26	4,153.95	132.06	2,666.90	8.44	67,195.38	0.00	14.52	0.00	0.00	323.20	14,867.14	16,981.46	112,722.19
August	30.00	0.00	0.13	4,747.50	671.25	198.66	3,731.75	245.17	1,373.54	8.10	64,250.48	0.00	12.65	0.00	0.00	434.41	14,174.91	16,781.69	106,660.24
September	26.91	0.00	0.00	4,666.82	935.08	132.80	3,807.38	156.46	1,984.73	8.18	67,366.88	0.00	14.19	0.00	0.00	408.72	14,759.49	17,146.63	111,414.27
<b>Total</b>	<b>349.16</b>	<b>0.00</b>	<b>5.09</b>	<b>55,035.59</b>	<b>15,044.97</b>	<b>1,914.74</b>	<b>58,331.53</b>	<b>2,499.31</b>	<b>18,401.69</b>	<b>83.52</b>	<b>820,740.14</b>	<b>0.00</b>	<b>98.75</b>	<b>23.08</b>	<b>15.58</b>	<b>10,396.09</b>	<b>190,075.02</b>	<b>186,317.95</b>	<b>1,359,332.21</b>
<b>Average</b>	<b>29.10</b>	<b>0.00</b>	<b>0.42</b>	<b>4,586.30</b>	<b>1,253.75</b>	<b>159.56</b>	<b>4,860.96</b>	<b>208.28</b>	<b>1,533.47</b>	<b>6.96</b>	<b>68,395.01</b>	<b>0.00</b>	<b>8.23</b>	<b>1.92</b>	<b>1.30</b>	<b>866.34</b>	<b>15,939.59</b>	<b>15,526.50</b>	<b>113,277.68</b>
<b>Percent</b>	<b>0.03%</b>	<b>0.00%</b>	<b>0.00%</b>	<b>4.05%</b>	<b>1.11%</b>	<b>0.14%</b>	<b>4.29%</b>	<b>0.18%</b>	<b>1.35%</b>	<b>0.01%</b>	<b>60.38%</b>	<b>0.00%</b>	<b>0.01%</b>	<b>0.00%</b>	<b>0.00%</b>	<b>0.76%</b>	<b>13.98%</b>	<b>13.71%</b>	<b>100.00%</b>

## FY 98/99

Month	Animals	Reef	Asbestos	C/D	Residue	Tires	Sludge	Direct	Fill	Furn.	Garbage	Land/Cirg.	Pest/Paint	Special	Trailers	Mulch	Trash/Other	Vegetation	Total
October	28.62	0.00	0.00	7,130.23	1,501.06	343.84	4,015.31	170.98	2,080.61	8.46	67,524.06	0.00	13.70	0.00	2.12	558.47	15,808.93	17,343.25	116,329.84
November	25.19	0.00	0.00	7,455.80	1,149.37	469.40	4,048.61	290.72	3,932.44	11.00	70,550.44	0.00	12.15	0.00	0.00	390.38	13,409.91	15,480.43	117,225.84
December	31.23	0.00	0.00	6,969.96	719.47	586.15	4,701.64	224.02	3,518.02	13.37	76,769.96	0.00	10.29	0.00	0.00	410.43	13,822.50	13,027.89	120,804.93
January	27.84	0.00	0.00	5,406.54	859.03	557.00	4,909.81	224.10	4,895.99	8.08	74,846.18	0.00	13.89	0.00	0.00	498.56	14,330.34	12,886.65	119,260.01
February	30.47	0.00	0.03	6,061.65	886.32	514.29	4,752.49	235.69	6,381.01	4.31	68,363.65	0.00	11.92	0.00	0.00	551.07	13,335.25	13,503.58	114,631.73
March	33.42	0.00	0.82	8,064.36	617.71	551.65	5,617.34	187.52	5,658.88	14.16	78,501.86	0.00	20.93	9.30	3.36	515.21	15,231.18	16,251.54	131,179.24
April	26.91	0.00	0.00	7,552.92	394.53	609.04	5,487.50	220.16	4,714.67	4.97	73,092.18	0.00	15.50	0.97	0.00	594.48	16,048.17	16,508.31	125,270.31
May	22.73	0.00	1.31	6,475.69	312.83	504.42	5,536.91	151.28	3,495.96	9.88	70,640.14	0.00	17.29	12.57	0.00	507.36	15,473.88	17,378.65	120,540.90
June	23.94	0.00	0.00	6,216.75	422.97	496.66	4,234.26	239.25	6,203.57	12.90	76,717.83	0.00	20.26	4.14	2.33	588.58	17,126.35	19,451.23	131,761.02
July	28.32	0.00	0.32	5,671.07	263.73	304.57	3,916.79	270.37	6,655.37	12.22	70,472.43	0.00	16.79	0.00	0.00	734.69	16,356.54	18,864.34	123,567.55
August	22.47	0.00	0.00	6,642.06	351.04	284.76	3,709.11	158.15	6,056.03	17.40	73,471.41	0.00	19.18	0.00	14.54	732.43	15,637.78	19,997.93	127,114.29
September	22.92	0.00	0.00	5,673.29	211.39	184.92	3,434.34	197.73	4,820.80	12.40	73,683.91	0.00	13.90	13.91	5.68	681.67	16,322.87	20,778.33	128,058.06
<b>Total</b>	<b>324.26</b>	<b>0.00</b>	<b>2.48</b>	<b>79,320.32</b>	<b>7,689.45</b>	<b>5,406.70</b>	<b>54,364.11</b>	<b>2,569.97</b>	<b>58,313.35</b>	<b>129.15</b>	<b>874,634.05</b>	<b>0.00</b>	<b>185.80</b>	<b>40.89</b>	<b>28.03</b>	<b>6,763.33</b>	<b>182,703.70</b>	<b>201,274.13</b>	<b>1,473,749.72</b>
<b>Average</b>	<b>27.02</b>	<b>0.00</b>	<b>0.21</b>	<b>6,610.03</b>	<b>640.79</b>	<b>450.56</b>	<b>4,530.34</b>	<b>214.16</b>	<b>4,859.45</b>	<b>10.76</b>	<b>72,886.17</b>	<b>0.00</b>	<b>15.48</b>	<b>3.41</b>	<b>2.34</b>	<b>563.61</b>	<b>15,225.31</b>	<b>16,772.84</b>	<b>122,812.48</b>
<b>Percent</b>	<b>0.02%</b>	<b>0.00%</b>	<b>0.00%</b>	<b>5.38%</b>	<b>0.52%</b>	<b>0.37%</b>	<b>3.69%</b>	<b>0.17%</b>	<b>3.96%</b>	<b>0.01%</b>	<b>59.35%</b>	<b>0.00%</b>	<b>0.01%</b>	<b>0.00%</b>	<b>0.00%</b>	<b>0.46%</b>	<b>12.40%</b>	<b>13.66%</b>	<b>100.00%</b>

## FY 99/00

Month	Animals	Reef	Asbestos	C/D	Residue	Tires	Sludge	Direct	Fill	Furn.	Garbage	Land/Cirg.	Pest/Paint	Special	Trailers	Mulch	Trash/Other	Vegetation	Total
October	29.93	0.00	0.00	5,904.09	186.71	147.62	3,316.23	380.88	3,800.94	12.32	75,429.94	0.00	11.39	23.38	0.00	1,030.96	14,666.95	21,885.64	126,826.98
November	22.22	0.00	1.08	5,918.34	143.10	176.30	4,686.77	342.37	4,676.42	13.17	74,985.94	0.00	16.42	0.00	0.00	934.72	14,472.82	21,188.47	127,388.14
December	36.39	0.00	0.00	5,698.34	142.50	265.52	4,775.46	328.46	4,328.21	14.47	76,583.23	0.00	20.89	18.51	3.99	642.11	14,117.24	14,518.76	121,494.08
January	28.13	0.00	0.47	5,730.83	254.78	159.52	4,892.84	368.16	8,255.79	8.48	75,317.43	0.00	15.37	13.40	10.26	572.11	13,904.23	13,061.84	122,593.64
February	28.44	0.00	0.03	5,520.51	395.23	186.74	4,042.63	500.03	4,768.14	16.02	72,963.01	0.00	16.31	23.11	0.00	718.37	13,222.10	13,865.71	116,266.38
March	24.78	0.00	0.00	5,975.37	417.98	220.97	4,654.17	343.40	5,183.96	12.16	79,324.98	0.00	23.11	16.57	0.00	583.42	15,373.44	14,910.71	127,065.02
April	24.21	0.00	1.49	6,369.07	680.56	174.98	3,856.13	320.53	4,551.38	13.29	72,516.07	0.00	18.09	0.00	3.16	477.10	14,384.94	14,100.39	117,491.39
May	25.05	0.00	0.00	5,918.17	666.43	181.38	5,099.54	305.16	6,679.88	12.67	75,451.41	0.00	19.60	11.73	2.32	692.61	15,263.85	15,577.80	125,907.60
June	18.82	0.00	0.50	5,521.64	633.82	145.03	4,314.36	253.55	5,659.13	17.62	71,775.00	0.00	18.25	0.00	1.35	681.82	15,272.03	15,896.86	120,009.78
July	25.15	0.00	0.00	5,483.15	289.30	129.49	4,425.77	284.95	5,101.21	21.16	70,910.34	0.00	16.92	9.95	5.77	708.99	15,803.54	15,388.36	118,604.05
August	25.49	0.00	0.00	6,444.41	438.96	231.76	4,798.54	268.68	5,162.53	17.48	74,834.09	0.00	19.58	12.56	16.23	2,543.40	17,746.71	18,723.82	131,284.24
September	26.23	0.00	0.00	5,386.38	503.06	96.84	4,314.51	306.84	5,514.93	24.03	70,273.57	0.00	22.43	0.00	3.49	897.56	14,532.30	16,263.53	118,165.70
<b>Total</b>	<b>314.84</b>	<b>0.00</b>	<b>3.57</b>	<b>69,870.30</b>	<b>4,752.43</b>	<b>2,116.15</b>	<b>53,176.95</b>	<b>4,003.01</b>	<b>63,682.52</b>	<b>182.87</b>	<b>890,275.01</b>	<b>0.00</b>	<b>218.36</b>	<b>129.21</b>	<b>46.57</b>	<b>10,483.17</b>	<b>178,660.15</b>	<b>195,181.89</b>	<b>1,473,097.00</b>
<b>Average</b>	<b>26.24</b>	<b>0.00</b>	<b>0.30</b>	<b>5,822.53</b>	<b>396.04</b>	<b>176.35</b>	<b>4,431.41</b>	<b>333.58</b>	<b>5,306.88</b>	<b>15.24</b>	<b>74,189.58</b>	<b>0.00</b>	<b>18.20</b>	<b>10.77</b>	<b>3.88</b>	<b>873.60</b>	<b>14,888.35</b>	<b>16,265.16</b>	<b>122,758.08</b>
<b>Percent</b>	<b>0.02%</b>	<b>0.00%</b>	<b>0.00%</b>	<b>4.74%</b>	<b>0.32%</b>	<b>0.14%</b>	<b>3.61%</b>	<b>0.27%</b>	<b>4.32%</b>	<b>0.01%</b>	<b>60.44%</b>	<b>0.00%</b>	<b>0.01%</b>	<b>0.01%</b>	<b>0.00%</b>	<b>0.71%</b>	<b>12.13%</b>	<b>13.25%</b>	<b>100.00%</b>

## FY 00/01

Month	Animals	Reef	Asbestos	C/D	Residue	Tires	Sludge	Direct	Fill	Furn.	Garbage	Land/Cirg.	Pest/Paint	Special	Trailers	Mulch	Trash/Other	Vegetation	Total
October	35.41	0.00	0.78	5,361.70	536.81	135.38	4,099.36	274.50	3,886.63	23.44	76,361.31	0.00	40.87	22.68	3.15	728.93	16,527.90	16,388.72	124,427.57
November	25.40	0.00	0.00	5,278.28	88.00	112.47	3,360.84	276.81	5,676.68	25.91	76,844.28	0.00	27.74	0.08	4.37	676.46	14,214.76	13,881.03	120,493.11
December	26.57	0.00	0.00	4,786.04	47.19	251.83	5,379.57	193.25	8,076.91	37.81	77,103.01	0.00	10.96	0.00	0.00	350.24	13,929.38	10,861.61	121,054.37
January	30.55	0.00	0.00	4,333.81	71.21	152.08	6,014.81	466.71	4,614.96	36.32	79,731.75	0.00	16.93	10.90	5.69	502.07	14,741.07	12,215.72	122,944.58
February	30.21	0.00	0.00	4,443.20	44.91	178.36	5,512.18	327.95	4,888.15	41.73	70,793.69	0.00	24.90	0.00	2.81	574.84	13,447.32	12,815.95	113,126.20
March	27.72	0.00	0.00	5,002.41	46.07	210.24	5,513.66	383.54	4,741.50	36.21	81,001.95	0.00	11.99	0.00	0.00	602.72	15,841.51	15,540.83	128,960.35
April	31.32	0.00	1.13	4,690.49	55.56	89.37	5,323.18	326.04	3,856.28	33.72	74,681.73	0.00	12.73	0.00	11.44	574.03	15,830.68	14,469.89	119,987.59
May	36.32	0.00	0.21	5,970.43	78.12	112.66	5,301.67	372.14	4,474.77	12.37	77,468.21	0.00	250.78	0.26	6.38	676.77	16,927.00	17,072.76	128,760.85
June	24.03	0.00	0.87	6,018.64	77.29	127.91	3,727.38	499.64	4,339.29	9.59	74,775.70	0.00	18.58	0.00	2.67	770.59	17,175.61	17,514.89	125,082.68
July	27.16	0.00	9.64	6,080.58	119.31	150.68	3,884.75	425.79	5,204.60	14.70	78,090.39	0.00	22.49	0.00	6.15	1,635.36	16,887.58	17,414.84	129,974.02
August	26.85	0.00	0.00	7,141.26	96.20	193.19	4,195.53	346.38	4,318.29	12.91	77,542.12	0.00	19.52	0.00	4.40	1,458.59	16,938.83	18,410.64	130,704.69
September	33.22	0.00	0.00	5,607.28	109.10	69.29	4,075.55	277.57	4,726.00	12.99	70,346.37	0.00	12.75	0.00	0.00	934.04	15,018.43	17,160.18	118,382.77
<b>Total</b>	<b>354.76</b>	<b>0.00</b>	<b>12.63</b>	<b>64,714.12</b>	<b>1,369.77</b>	<b>1,783.46</b>	<b>56,388.48</b>	<b>4,170.32</b>	<b>58,804.06</b>	<b>297.70</b>	<b>914,740.49</b>	<b>0.00</b>	<b>470.24</b>	<b>33.92</b>	<b>47.06</b>	<b>9,484.64</b>	<b>187,480.07</b>	<b>183,747.06</b>	<b>1,483,898.78</b>
<b>Average</b>	<b>29.56</b>	<b>0.00</b>	<b>1.05</b>	<b>5,392.84</b>	<b>114.15</b>	<b>148.62</b>	<b>4,699.04</b>	<b>347.53</b>	<b>4,900.34</b>	<b>24.81</b>	<b>76,228.37</b>	<b>0.00</b>	<b>39.19</b>	<b>2.83</b>	<b>3.92</b>	<b>790.39</b>	<b>15,623.34</b>	<b>15,312.26</b>	<b>123,668.23</b>
<b>Percent</b>	<b>0.02%</b>	<b>0.00%</b>	<b>0.00%</b>	<b>4.36%</b>	<b>0.09%</b>	<b>0.12%</b>	<b>3.80%</b>	<b>0.28%</b>	<b>3.96%</b>	<b>0.02%</b>	<b>61.64%</b>	<b>0.00%</b>	<b>0.03%</b>	<b>0.00%</b>	<b>0.00%</b>	<b>0.64%</b>	<b>12.63%</b>	<b>12.38%</b>	<b>100.00%</b>

## FY 01/02

Month	Animals	Reef	Asbestos	C/D	Residue	Tires	Sludge	Direct	Fill	Furn.	Garbage	Land/Cirg.	Pest/Paint	Special	Trailers	Mulch	Trash/Other	Vegetation	Total
October	39.36	0.00	3.16	7,538.43	121.88	119.80	4,366.43	149.62	4,887.16	14.52	80,051.97	0.00	17.84	0.00	0.00	1,266.16	17,830.55	19,391.01	135,797.89
November	27.16	0.00	0.00	6,712.73	28.03	79.09	4,899.44	89.69	5,619.19	14.98	77,287.88	0.00	21.13	0.00	6.98	860.12	14,954.28	15,161.21	125,761.91
December	33.94	0.00	0.00	5,969.71	71.04	120.14	5,534.03	193.51	5,253.46	17.90	79,533.80	0.00	25.30	0.00	0.70	604.52	14,342.68	12,332.41	124,033.24
January	29.99	0.00	0.00	5,925.52	3.61	158.99	5,247.15	265.38	6,294.81	14.19	82,873.32	0.00	29.77	11.09	4.60	730.06	15,336.88	14,734.75	131,680.11
February	28.44	0.00	0.00	5,972.42	29.51	100.84	5,142.97	133.72	4,514.17	11.06	77,101.58	0.00	20.91	0.00	3.10	482.26	14,481.86	15,070.55	123,073.39
March	43.84	0.00	0.00	5,586.53	31.82	140.53	6,362.86	99.38	5,054.31	17.59	76,330.01	0.00	19.56	11.29	0.00	606.31	14,536.74	13,662.98	122,403.75
April	28.25	0.00	0.00	6,365.51	106.41	204.93	6,289.43	92.74	3,197.34	13.41	82,324.53	0.00	24.95	0.00	0.00	528.30	16,461.67	15,629.01	131,286.48
May	36.52	0.00	0.00	7,525.60	71.01	94.16	5,567.86	3,232.51	12,486.83	15.33	81,580.75	0.00	22.95	0.00	5.05	1,060.18	16,891.76	18,804.57	147,405.08
June	31.68	0.00	0.00	6,227.50	66.93	66.42	5,741.94	3,593.71	3,404.02	11.86	77,740.57	0.00	23.68	0.00	3.21	1,717.47	15,493.66	17,933.31	132,055.96
July	38.92	0.00	4.62	5,876.28	133.85	56.93	5,078.12	4,179.39	3,979.46	9.27	82,982.94	0.00	24.66	0.00	12.21	1,630.43	17,231.18	19,140.43	140,378.69
August	35.03	0.00	0.00	6,298.73	111.59	94.24	3,479.61	1,368.28	4,735.51	15.31	78,707.20	0.00	27.38	0.00	0.00	2,258.45	16,478.85	20,280.77	133,890.95
September	36.53	0.00	0.77	4,869.94	191.27	154.96	4,102.27	3,098.28	11,402.90	13.36	74,171.20	0.00	24.02	0.00	0.86	1,874.88	14,613.66	17,285.02	131,839.92
<b>Total</b>	<b>409.66</b>	<b>0.00</b>	<b>8.55</b>	<b>74,868.90</b>	<b>966.95</b>	<b>1,391.03</b>	<b>61,812.11</b>	<b>16,496.21</b>	<b>70,839.16</b>	<b>168.78</b>	<b>950,685.75</b>	<b>0.00</b>	<b>282.15</b>	<b>22.38</b>	<b>36.71</b>	<b>13,599.24</b>	<b>188,653.77</b>	<b>199,326.02</b>	<b>1,579,567.37</b>
<b>Average</b>	<b>34.14</b>	<b>0.00</b>	<b>0.71</b>	<b>6,239.08</b>	<b>80.58</b>	<b>115.92</b>	<b>5,151.01</b>	<b>1,374.68</b>	<b>5,903.26</b>	<b>14.07</b>	<b>79,223.81</b>	<b>0.00</b>	<b>23.51</b>	<b>1.87</b>	<b>3.06</b>	<b>1,133.27</b>	<b>15,721.15</b>	<b>16,610.50</b>	<b>131,630.61</b>
<b>Percent</b>	<b>0.03%</b>	<b>0.00%</b>	<b>0.00%</b>	<b>4.74%</b>	<b>0.06%</b>	<b>0.09%</b>	<b>3.91%</b>	<b>1.04%</b>	<b>4.48%</b>	<b>0.01%</b>	<b>60.19%</b>	<b>0.00%</b>	<b>0.02%</b>	<b>0.00%</b>	<b>0.00%</b>	<b>0.86%</b>	<b>11.94%</b>	<b>12.62%</b>	<b>100.00%</b>

## FY 02/03

Month	Animals	Reef	Asbestos	C/D	Residue	Tires	Sludge	Direct	Fill	Furn/App	Garbage	Land/Cirg.	Pest/Paint	Special	Trailers	Mulch	Trash/Other	Vegetation	Total
October	41.83	0.00	0.00	6,004.05	261.27	341.44	5,005.58	752.25	22,889.02	17.84	79,959.99	0.00	20.03	6.76	2.84	1,463.43	15,219.54	16,544.26	148,530.13
November	33.83	0.00	0.00	5,456.46	185.24	392.66	4,846.04	149.83	4,005.34	25.69	78,743.07	0.00	22.30	0.00	8.50	791.07	14,211.79	16,290.02	125,161.84
December	39.06	0.00	0.00	4,202.38	280.94	286.43	5,555.02	164.16	8,220.82	34.64	87,215.24	0.00	23.22	8.79	11.65	1,602.60	14,311.08	13,782.12	135,738.15
January	34.73	0.00	1.58	5,785.14	222.08	419.77	5,702.42	206.75	8,831.75	15.89	84,847.05	0.00	35.60	0.14	7.71	1,431.45	14,778.96	14,614.32	137,035.34
February	31.06	0.00	0.00	5,483.43	142.04	403.10	4,786.56	186.51	7,014.66	19.52	78,843.50	0.00	18.43	0.00	0.00	1,020.31	13,676.44	15,300.88	126,926.44
March	33.67	0.00	0.00	6,136.99	330.64	282.84	6,093.84	136.54	8,093.68	23.85	88,486.37	0.00	23.02	0.00	7.11	1,322.04	16,440.24	20,269.31	148,190.14
April	34.12	0.00	0.00	5,888.21	191.16	193.43	6,378.57	335.35	18,668.77	21.97	86,406.08	0.00	24.42	0.00	13.76	1,687.69	17,363.24	19,631.90	156,838.67
May	32.50	0.00	0.00	6,147.44	169.04	195.49	5,550.30	542.42	30,150.47	26.23	86,192.02	0.00	30.10	0.00	11.90	938.95	17,926.73	20,061.39	167,974.98
June	31.72	0.00	2.03	6,483.08	227.18	186.48	4,307.54	699.67	9,332.07	20.54	82,088.83	0.00	21.49	0.00	3.44	2,123.37	17,453.86	21,424.08	144,405.38
July	31.73	0.00	4.66	6,097.76	175.09	193.26	4,731.34	1,391.74	15,885.55	18.75	81,808.35	0.00	31.85	10.33	5.80	2,724.60	17,130.77	22,131.72	152,373.30
August	38.15	0.00	1.06	6,292.26	208.57	131.13	4,938.11	2,460.00	10,986.20	22.37	80,948.25	0.00	44.10	0.00	2.54	3,035.19	15,934.22	22,646.19	147,688.34
September	38.91	0.00	0.00	5,965.53	130.40	105.91	4,546.56	3,428.72	22,975.56	19.90	81,934.74	0.00	30.35	0.05	4.88	1,292.56	16,593.83	22,680.32	159,748.22
<b>Total</b>	<b>421.31</b>	<b>0.00</b>	<b>9.33</b>	<b>69,942.73</b>	<b>2,523.65</b>	<b>3,131.94</b>	<b>62,951.88</b>	<b>10,453.94</b>	<b>167,053.89</b>	<b>267.19</b>	<b>997,573.49</b>	<b>0.00</b>	<b>324.91</b>	<b>26.07</b>	<b>80.13</b>	<b>19,433.26</b>	<b>191,040.70</b>	<b>225,376.51</b>	<b>1,750,610.93</b>
<b>Average</b>	<b>35.11</b>	<b>0.00</b>	<b>0.78</b>	<b>5,828.56</b>	<b>210.30</b>	<b>261.00</b>	<b>5,245.99</b>	<b>871.16</b>	<b>13,921.16</b>	<b>22.27</b>	<b>83,131.12</b>	<b>0.00</b>	<b>27.08</b>	<b>2.17</b>	<b>6.68</b>	<b>1,619.44</b>	<b>15,920.06</b>	<b>18,781.38</b>	<b>145,884.24</b>
<b>Percent</b>	<b>0.02%</b>	<b>0.00%</b>	<b>0.00%</b>	<b>4.00%</b>	<b>0.14%</b>	<b>0.18%</b>	<b>3.60%</b>	<b>0.60%</b>	<b>9.54%</b>	<b>0.02%</b>	<b>56.98%</b>	<b>0.00%</b>	<b>0.02%</b>	<b>0.00%</b>	<b>0.00%</b>	<b>1.11%</b>	<b>10.91%</b>	<b>12.87%</b>	<b>100.00%</b>

**FY 03/04**

Month	Animals	Reef	Asbestos	C/D	Residue	Tires	Sludge	Direct	Fill	Furn./App	Garbage	Land/Cirg.	Pest/Paint	Special	Trailers	Mulch	Trash/Other	Vegetation	Total
October	39.01	0.00	0.00	6,622.89	60.46	172.64	4,966.58	1,054.16	27,266.08	25.10	83,280.46	0.00	21.70	0.00	0.00	950.97	15,244.31	21,501.01	161,205.37
November	29.85	0.00	0.00	5,830.30	1.40	152.24	4,595.21	1,116.85	11,078.83	22.52	80,342.64	0.00	23.25	0.00	14.63	828.81	13,558.66	18,161.62	135,756.81
December	35.16	0.00	0.39	5,627.50	2.06	1,548.45	5,786.22	1,800.70	8,250.81	23.42	93,006.37	0.00	30.95	0.00	7.41	639.99	14,114.57	17,018.84	147,892.84
January	41.85	0.00	1.14	6,208.64	0.00	112.21	5,665.62	628.45	8,364.68	22.30	87,947.47	0.00	34.02	0.85	2.87	752.55	13,969.12	16,825.97	140,577.74
February	37.76	0.00	0.00	6,242.82	19.90	584.40	5,067.48	1,400.81	6,720.63	20.05	82,824.86	0.00	20.70	0.00	5.68	508.22	13,692.18	15,756.28	132,901.77
March	39.71	0.00	2.75	5,500.25	0.00	259.21	6,740.49	1,537.29	9,978.99	50.36	93,969.16	0.00	46.11	0.00	0.74	767.87	16,045.76	20,630.48	155,569.17
April	36.50	0.00	0.16	5,702.52	0.00	161.18	7,365.53	1,353.43	7,253.87	15.49	88,504.46	0.00	28.15	0.00	2.34	1,025.76	17,615.31	21,409.11	150,473.81
May	29.90	0.00	2.15	5,761.06	0.00	101.33	5,275.58	135.13	8,684.55	16.91	85,063.42	0.00	21.45	0.00	14.94	694.96	17,421.34	22,872.15	146,094.87
June	44.54	0.00	0.00	17,687.61	0.00	126.94	5,137.44	679.63	16,514.17	21.34	86,558.12	0.00	30.55	0.00	1.07	788.17	18,322.96	24,473.37	170,385.91
July	33.21	0.00	0.00	6,489.77	0.00	212.42	4,783.93	1,130.05	20,717.07	25.32	85,310.33	0.00	32.60	0.00	11.92	820.77	18,926.38	23,347.59	161,841.36
August	39.11	0.00	0.00	6,570.04	0.00	142.02	4,557.97	2,061.44	13,836.83	22.14	88,738.61	0.00	37.05	0.00	16.44	149.60	18,636.74	26,008.31	160,816.30
September	30.93	0.00	0.00	6,972.31	18.94	118.64	4,623.93	759.84	7,488.84	20.34	111,183.74	0.00	22.37	0.00	2.99	1,639.68	13,492.61	22,470.24	168,845.40
<b>Total</b>	<b>437.53</b>	<b>0.00</b>	<b>6.59</b>	<b>85,215.71</b>	<b>102.76</b>	<b>3,691.68</b>	<b>64,565.98</b>	<b>13,657.78</b>	<b>146,155.35</b>	<b>285.29</b>	<b>1,066,729.64</b>	<b>0.00</b>	<b>348.90</b>	<b>0.85</b>	<b>81.03</b>	<b>9,567.35</b>	<b>191,039.94</b>	<b>250,474.97</b>	<b>1,832,361.35</b>
<b>Average</b>	<b>36.46</b>	<b>0.00</b>	<b>0.55</b>	<b>7,101.31</b>	<b>8.56</b>	<b>307.64</b>	<b>5,380.50</b>	<b>1,138.15</b>	<b>12,179.61</b>	<b>23.77</b>	<b>88,894.14</b>	<b>0.00</b>	<b>29.08</b>	<b>0.07</b>	<b>6.75</b>	<b>797.28</b>	<b>15,920.00</b>	<b>20,872.91</b>	<b>152,696.78</b>
<b>Percent</b>	<b>0.02%</b>	<b>0.00%</b>	<b>0.00%</b>	<b>4.65%</b>	<b>0.01%</b>	<b>0.20%</b>	<b>3.52%</b>	<b>0.75%</b>	<b>7.98%</b>	<b>0.02%</b>	<b>58.22%</b>	<b>0.00%</b>	<b>0.02%</b>	<b>0.00%</b>	<b>0.00%</b>	<b>0.52%</b>	<b>10.43%</b>	<b>13.67%</b>	<b>100.00%</b>

**FY 04/05**

Month	Animals	Reef	Asbestos	C/D	Residue	Tires	Sludge	Direct	Fill	Furn./App	Garbage	Land/Cirg.	Pest/Paint	Special	Trailers	Mulch	Trash/Other	Vegetation	Total
October	45.11	0.00	0.00	12,590.13	0.00	118.83	5,024.78	219.48	19,906.74	20.29	96,423.44	0.00	23.18	0.00	7.49	528.27	14,551.56	22,079.64	171,538.94
November	41.82	0.00	0.00	12,304.79	0.00	111.32	6,442.78	128.46	21,194.71	23.02	94,856.70	0.00	27.83	0.00	20.44	1,615.77	15,188.93	21,827.72	173,784.29
December	31.44	0.00	0.00	12,500.47	0.00	343.09	6,707.04	681.82	25,375.23	27.02	97,800.29	0.00	39.46	0.00	0.00	259.27	22,197.92	21,320.00	187,293.05
January	39.57	0.00	1.87	12,275.42	3.58	238.04	6,425.29	1,695.23	17,205.22	32.22	96,296.96	0.00	27.52	0.00	8.07	671.27	18,517.96	19,580.85	173,019.07
February	32.89	0.00	0.00	13,802.74	0.73	311.27	8,939.97	1,534.59	18,552.60	31.46	88,239.89	0.00	19.87	0.00	0.00	651.60	16,202.42	16,720.86	162,940.69
March	38.87	0.00	0.00	14,014.56	0.00	385.43	8,729.67	739.67	23,859.19	23.94	104,044.42	0.00	43.49	0.00	5.35	478.93	17,880.00	18,783.71	189,027.13
April	34.04	0.00	1.79	12,454.07	3.85	160.04	7,942.95	122.83	23,533.06	16.73	94,732.89	0.00	43.95	0.00	0.00	779.48	17,850.71	19,436.76	177,113.15
May	31.78	0.00	0.11	13,041.44	0.00	133.48	6,940.42	2,517.17	27,104.22	22.61	95,318.14	0.00	34.20	0.00	0.00	937.81	17,359.92	20,311.25	183,752.55
June	25.99	0.00	0.00	11,335.57	0.00	138.97	6,533.94	2,265.49	16,773.65	25.26	97,939.56	0.00	52.55	2.90	3.01	306.89	19,055.56	23,721.09	178,180.43
July	24.91	0.00	0.00	10,423.19	0.00	143.56	5,615.06	625.61	8,864.30	15.57	86,879.16	0.00	32.60	0.00	0.79	848.87	17,389.49	21,978.09	152,841.20
August	27.90	0.00	0.37	11,751.47	0.00	170.78	5,946.68	959.13	9,274.26	15.28	91,187.85	0.00	32.53	0.00	0.70	597.53	16,762.63	24,898.99	161,626.10
September	28.26	0.00	0.00	10,513.70	0.00	182.81	5,697.16	1,788.86	8,577.27	23.84	85,721.65	0.00	29.78	0.00	14.23	657.53	16,496.55	26,511.29	156,242.93
<b>Total</b>	<b>402.58</b>	<b>0.00</b>	<b>4.14</b>	<b>147,007.55</b>	<b>8.16</b>	<b>2,437.62</b>	<b>78,845.74</b>	<b>13,278.34</b>	<b>220,220.45</b>	<b>277.24</b>	<b>1,129,440.95</b>	<b>0.00</b>	<b>406.76</b>	<b>2.90</b>	<b>60.08</b>	<b>8,333.12</b>	<b>209,453.65</b>	<b>257,170.25</b>	<b>2,067,349.53</b>
<b>Average</b>	<b>33.55</b>	<b>0.00</b>	<b>0.35</b>	<b>12,250.63</b>	<b>0.68</b>	<b>203.14</b>	<b>6,570.48</b>	<b>1,106.53</b>	<b>18,351.70</b>	<b>23.10</b>	<b>94,120.08</b>	<b>0.00</b>	<b>33.90</b>	<b>0.24</b>	<b>5.01</b>	<b>694.43</b>	<b>17,454.47</b>	<b>21,430.85</b>	<b>172,279.13</b>
<b>Percent</b>	<b>0.02%</b>	<b>0.00%</b>	<b>0.00%</b>	<b>7.11%</b>	<b>0.00%</b>	<b>0.12%</b>	<b>3.81%</b>	<b>0.64%</b>	<b>10.65%</b>	<b>0.01%</b>	<b>54.63%</b>	<b>0.00%</b>	<b>0.02%</b>	<b>0.00%</b>	<b>0.00%</b>	<b>0.40%</b>	<b>10.13%</b>	<b>12.44%</b>	<b>100.00%</b>

**FY 05/06**

Month	Animals	Reef	Asbestos	C/D	Residue	Tires	Sludge	Direct LF	Fill	Furn./App	Garbage	Land/Cirg.	Pest/Paint	Special	Trailers	Mulch	Trash/Other	Vegetation	Total
October	29.38	0.00	0.00	8,564.65	0.00	141.87	5,506.80	1,587.61	6,936.04	16.28	94,920.99	0.00	28.20	0.00	3.43	334.98	13,032.22	20,714.80	151,817.25
November	28.88	0.00	0.00	10,779.11	0.00	100.75	6,683.19	564.40	9,525.82	21.32	104,308.85	0.00	38.28	0.00	22.92	231.30	9,746.30	14,242.81	156,293.93
December	24.73	0.00	0.68	17,634.21	0.00	177.21	8,019.86	779.89	7,953.01	17.12	99,328.87	0.00	21.56	0.00	20.79	297.82	16,907.98	18,230.50	169,414.23
January	39.20	0.00	0.00	19,901.82	0.00	101.78	7,306.13	809.31	7,056.46	17.16	97,985.66	0.00	29.70	0.00	6.72	527.03	18,829.53	20,700.44	173,310.94
February	25.14	0.00	0.00	17,265.02	4.27	232.65	7,084.26	781.90	6,078.26	14.17	89,136.99	0.00	29.64	2.85	2.00	559.12	16,553.46	18,907.76	156,677.49
March	28.90	0.00	1.04	24,392.95	0.00	194.14	7,525.37	2,755.45	6,045.93	24.79	100,787.74	0.00	39.61	0.00	20.07	1,120.08	18,192.43	20,581.00	181,709.50
April	30.56	0.00	1.78	21,252.74	0.00	117.36	6,625.37	1,227.12	5,930.15	11.01	91,605.35	0.00	22.25	0.00	4.78	923.86	15,943.98	20,028.01	163,724.32
May	21.89	0.00	9.23	21,170.62	0.00	126.04	7,825.41	3,792.54	5,447.98	15.31	99,285.87	0.00	27.72	0.00	4.77	0.00	17,969.15	24,653.92	180,350.45
June	39.99	0.00	0.81	22,113.32	10.26	135.09	5,829.10	3,253.57	11,313.89	14.59	91,979.75	0.00	31.49	0.00	31.84	69.38	17,563.81	25,599.41	177,986.30
July	26.97	0.00	0.00	16,901.31	0.00	209.72	6,928.42	2,338.04	9,023.40	13.54	88,171.24	0.00	22.16	0.00	6.74	1,651.34	16,972.37	25,254.75	166,620.00
August	30.79	0.00	0.18	15,975.04	0.00	263.30	5,145.11	9,412.87	8,571.77	14.63	89,208.74	0.00	22.02	0.00	0.00	106.44	14,906.15	26,886.03	170,543.07
September	29.64	0.00	0.00	14,513.36	0.00	130.38	4,306.02	8,727.41	12,985.39	21.82	88,334.18	0.00	17.73	0.41	4.40	1,548.54	14,692.59	24,265.74	169,577.61
<b>Total</b>	<b>356.07</b>	<b>0.00</b>	<b>13.72</b>	<b>210,464.15</b>	<b>14.53</b>	<b>1,930.29</b>	<b>78,785.04</b>	<b>36,030.11</b>	<b>96,868.10</b>	<b>201.74</b>	<b>1,135,054.23</b>	<b>0.00</b>	<b>330.36</b>	<b>3.26</b>	<b>128.46</b>	<b>7,369.89</b>	<b>190,409.97</b>	<b>260,065.17</b>	<b>2,018,025.09</b>
<b>Average</b>	<b>29.67</b>	<b>0.00</b>	<b>1.14</b>	<b>17,538.68</b>	<b>1.21</b>	<b>160.86</b>	<b>6,565.42</b>	<b>3,002.51</b>	<b>8,072.34</b>	<b>16.81</b>	<b>94,587.85</b>	<b>0.00</b>	<b>27.53</b>	<b>0.27</b>	<b>10.71</b>	<b>614.16</b>	<b>15,867.50</b>	<b>21,672.10</b>	<b>168,168.76</b>
<b>Percent</b>	<b>0.02%</b>	<b>0.00%</b>	<b>0.00%</b>	<b>10.43%</b>	<b>0.00%</b>	<b>0.10%</b>	<b>3.90%</b>	<b>1.79%</b>	<b>4.80%</b>	<b>0.01%</b>	<b>56.25%</b>	<b>0.00%</b>	<b>0.02%</b>	<b>0.00%</b>	<b>0.01%</b>	<b>0.37%</b>	<b>9.44%</b>	<b>12.89%</b>	<b>100.00%</b>



FY 06/07

Month	Animals	Reef	Asbestos	C/D	Residue	Tires	Sludge	Direct LF	Fill	Furn./App	Garbage	Land/Clrq.	Pest/Paint	Special	Trailers	Mulch	Trash/Other	Vegetation	Total
October	32.02	0.00	0.00	13,716.95	0.00	165.41	4,470.08	4,329.25	16,313.67	14.28	85,256.05	0.00	25.37	0.00	3.51	1,754.63	13,994.84	22,452.47	162,528.53
November	23.62	0.00	6.83	12,571.49	0.00	153.06	5,315.03	1,903.18	9,949.04	11.58	87,776.62	0.00	29.13	0.00	24.15	5.93	13,473.26	18,647.75	149,890.67
December	28.90	0.00	0.58	11,312.72	2.13	136.82	6,757.72	2,270.10	6,833.49	16.19	90,459.72	0.00	22.71	0.00	5.89	2,588.87	13,160.32	14,238.13	147,834.29
January	37.34	0.00	0.00	12,883.50	0.00	159.26	8,567.71	2,683.74	6,504.60	9.69	96,194.13	0.00	35.71	11.12	5.67	434.28	14,992.02	17,295.19	159,813.96
February	33.42	0.00	0.00	9,653.58	22.50	176.65	7,065.32	2,424.25	3,591.89	15.98	83,792.63	0.00	34.01	0.00	5.14	644.05	12,375.32	15,097.99	134,932.73
March	40.62	0.00	0.32	10,401.32	0.00	157.18	7,514.71	2,594.25	5,734.94	25.55	92,311.83	0.00	30.78	3.08	10.02	1,235.60	13,439.14	17,156.65	150,655.99
April	29.83	0.00	0.00	11,122.67	0.00	172.63	7,434.71	189.94	189.94	14.42	87,373.33	0.00	21.33	0.50	0.00	671.21	13,607.79	18,796.28	142,990.87
May	32.85	0.00	0.65	11,017.16	0.00	147.27	6,209.49	1,031.56	7,756.01	11.18	91,203.96	0.00	32.61	1.53	0.00	885.24	14,277.53	23,514.49	156,121.53
June	32.55	0.00	0.00	9,906.71	0.00	131.51	5,524.89	2,408.65	4,676.77	13.49	88,774.59	0.00	34.26	2.36	0.33	659.70	14,245.44	23,078.52	149,489.77
July	26.67	0.00	0.82	8,080.89	0.00	117.07	5,217.15	2,999.16	7,763.44	12.02	89,772.71	0.00	30.21	0.00	3.94	916.41	14,483.58	22,824.26	152,248.33
August	39.72	0.00	0.20	8,929.02	0.00	313.74	5,630.01	265.71	5,919.84	10.11	87,899.70	0.00	44.22	0.00	15.34	1,470.76	15,013.33	21,901.23	147,452.93
September	24.64	0.00	0.00	6,527.67	0.00	181.93	5,518.26	429.55	6,574.88	9.35	79,747.39	0.00	17.81	0.79	3.64	0.00	12,802.96	16,763.78	128,602.65
<b>Total</b>	<b>382.18</b>	<b>0.00</b>	<b>9.40</b>	<b>126,123.68</b>	<b>24.63</b>	<b>2,012.53</b>	<b>75,225.08</b>	<b>23,529.34</b>	<b>85,174.80</b>	<b>163.84</b>	<b>1,060,562.66</b>	<b>0.00</b>	<b>358.15</b>	<b>19.38</b>	<b>77.63</b>	<b>11,266.68</b>	<b>165,865.53</b>	<b>231,766.74</b>	<b>1,782,562.25</b>
<b>Average</b>	<b>31.85</b>	<b>0.00</b>	<b>0.78</b>	<b>10,510.31</b>	<b>2.05</b>	<b>167.71</b>	<b>6,268.76</b>	<b>1,960.78</b>	<b>7,097.90</b>	<b>13.65</b>	<b>88,380.22</b>	<b>0.00</b>	<b>29.85</b>	<b>1.62</b>	<b>6.47</b>	<b>938.89</b>	<b>13,822.13</b>	<b>19,313.90</b>	<b>148,546.85</b>
<b>Percent</b>	<b>0.02%</b>	<b>0.00%</b>	<b>0.00%</b>	<b>7.08%</b>	<b>0.00%</b>	<b>0.11%</b>	<b>4.22%</b>	<b>1.32%</b>	<b>4.78%</b>	<b>0.01%</b>	<b>59.50%</b>	<b>0.00%</b>	<b>0.02%</b>	<b>0.00%</b>	<b>0.00%</b>	<b>0.63%</b>	<b>9.30%</b>	<b>13.00%</b>	<b>100.00%</b>

FY 07/08

Month	Animals	Reef	Asbestos	C/D	Residue	Tires	Sludge	Direct LF	Fill	Furn./App	Garbage	Land/Clrq.	Pest/Paint	Special	Trailers	Mulch	Trash/Other	Vegetation	Total
October	27.37	0.00	0.00	6,717.09	0.00	160.97	5,342.07	648.07	10,524.34	26.77	93,741.53	0.00	34.44	1.50	0.00	738.95	15,795.42	17,673.19	151,431.71
November	34.49	0.00	0.00	5,780.74	0.42	121.79	4,098.44	435.26	11,205.55	4.44	87,802.94	0.00	35.28	0.00	0.25	374.99	13,241.97	15,037.94	136,174.50
December	31.87	0.00	0.00	5,442.68	6.25	142.75	5,524.63	1,418.21	9,905.89	11.59	88,459.28	0.00	31.63	0.00	2.82	1,187.18	12,167.55	11,332.08	135,664.61
January	31.88	0.00	0.00	6,518.81	24.39	219.12	6,072.90	1,301.82	9,470.28	17.41	93,120.41	0.00	38.15	0.00	0.00	414.60	13,394.70	13,723.17	144,347.64
February	31.81	0.00	0.00	5,551.99	4.48	234.71	4,630.24	2,342.30	6,971.53	7.53	87,517.75	0.00	37.61	0.11	0.44	700.61	12,259.01	12,668.89	132,959.01
March	35.38	0.00	0.00	5,951.02	19.60	149.14	7,066.68	2,065.65	8,572.13	13.07	91,211.82	0.00	32.28	0.00	0.64	1,050.03	13,164.90	14,317.98	143,650.32
April	34.61	0.00	0.58	7,092.57	0.00	161.25	6,872.05	1,866.67	9,674.29	10.94	88,978.15	0.00	50.96	0.00	2.43	808.84	14,593.37	16,525.73	146,672.44
May	28.31	0.00	0.54	5,402.15	20.28	114.13	5,521.51	2,516.49	9,349.89	10.56	84,267.69	0.00	36.41	0.00	0.00	0.00	13,142.06	19,112.27	139,522.29
June	25.92	0.00	0.00	6,293.40	0.00	113.36	6,089.02	3,672.54	8,936.23	7.34	80,835.58	0.00	38.14	0.00	0.00	901.52	12,613.35	19,573.06	139,099.46
July	36.01	0.00	0.00	6,418.03	0.00	148.90	5,553.47	7,015.98	8,458.57	7.77	82,731.93	0.00	53.94	0.04	3.42	1,405.80	14,152.42	20,861.30	146,847.58
August	26.76	0.00	0.00	5,021.19	0.00	173.52	5,016.09	2,900.39	8,760.30	6.30	78,336.60	0.00	31.34	0.00	7.09	0.00	13,481.42	20,007.28	133,768.28
September	32.15	0.00	0.34	4,649.58	0.00	147.32	6,715.91	1,122.41	7,837.23	3.86	79,237.26	0.00	36.19	0.00	0.00	542.54	13,464.72	20,083.25	133,872.76
<b>Total</b>	<b>376.56</b>	<b>0.00</b>	<b>1.46</b>	<b>70,839.25</b>	<b>75.42</b>	<b>1,886.96</b>	<b>68,503.01</b>	<b>27,305.79</b>	<b>109,666.23</b>	<b>127.58</b>	<b>1,036,240.94</b>	<b>0.00</b>	<b>456.57</b>	<b>1.65</b>	<b>17.09</b>	<b>8,125.06</b>	<b>161,470.89</b>	<b>200,916.14</b>	<b>1,686,010.60</b>
<b>Average</b>	<b>31.38</b>	<b>0.00</b>	<b>0.12</b>	<b>5,903.27</b>	<b>6.29</b>	<b>157.25</b>	<b>5,708.58</b>	<b>2,275.48</b>	<b>9,138.85</b>	<b>10.63</b>	<b>86,353.41</b>	<b>0.00</b>	<b>38.05</b>	<b>0.14</b>	<b>1.42</b>	<b>677.09</b>	<b>13,455.91</b>	<b>16,743.01</b>	<b>140,500.88</b>
<b>Percent</b>	<b>0.02%</b>	<b>0.00%</b>	<b>0.00%</b>	<b>4.20%</b>	<b>0.00%</b>	<b>0.11%</b>	<b>4.06%</b>	<b>1.62%</b>	<b>6.50%</b>	<b>0.01%</b>	<b>61.46%</b>	<b>0.00%</b>	<b>0.03%</b>	<b>0.00%</b>	<b>0.00%</b>	<b>0.48%</b>	<b>9.58%</b>	<b>11.92%</b>	<b>100.00%</b>

FY 08/09

Month	Animals	Reef	Asbestos	C/D	Residue	Tires	Sludge	Direct LF	Fill	Furn./App	Garbage	Land/Clrq.	Pest/Paint	Special	Trailers	Mulch	Trash/Other	Vegetation	Total
October	27.08	0.00	0.00	4,881.48	2.42	109.37	4,628.69	1,089.45	9,129.29	4.32	78,777.22	0.00	38.34	0.00	5.19	1,208.85	13,087.12	20,075.16	133,063.98
November	27.37	0.00	0.90	6,817.59	21.93	87.15	3,542.80	501.96	5,932.31	7.57	70,942.98	0.00	24.29	0.00	0.89	208.92	9,891.33	15,318.12	113,326.11
December	38.24	0.00	0.00	3,709.71	0.00	89.09	5,293.59	1,885.87	5,335.64	8.72	86,074.31	0.00	49.62	0.00	0.00	176.48	10,586.08	14,101.72	127,349.07
January	35.50	0.00	0.00	3,393.15	0.00	109.70	5,878.17	1,750.41	5,120.04	6.80	80,206.49	0.00	43.49	0.00	3.18	1,112.12	10,176.67	14,121.18	121,956.90
February	29.69	0.00	0.00	3,810.32	0.00	345.49	6,261.61	1,221.31	4,250.25	7.27	72,104.89	0.00	37.07	0.00	0.00	798.46	8,645.17	12,900.34	110,411.87
March	27.38	0.00	0.00	4,039.86	0.00	100.02	6,641.73	838.16	5,228.22	22.95	81,540.81	0.00	35.98	0.00	0.00	7.62	11,775.36	15,860.71	126,118.80
April	36.42	0.00	0.00	3,959.98	0.00	106.97	8,103.25	1,98.47	6,325.49	8.04	78,445.90	0.00	43.01	0.00	0.00	1,594.45	11,614.44	16,933.77	127,370.19
May	28.43	0.00	0.00	3,514.94	0.00	80.66	7,509.28	1,112.19	5,784.28	11.17	78,536.03	0.00	55.63	0.00	0.00	0.00	11,086.14	15,980.73	123,699.48
June	34.15	0.00	1.83	4,018.63	0.00	108.37	7,009.20	2,117.41	7,775.53	8.88	80,860.88	0.00	41.98	0.00	0.00	1,846.89	12,345.02	19,271.73	135,440.50
July	35.45	0.00	0.00	4,137.12	0.00	68.35	8,128.77	1,501.00	7,834.91	9.04	76,858.99	0.00	37.12	0.00	10.19	281.43	13,998.20	20,112.39	133,012.96
August	25.00	0.00	0.00	3,977.63	0.00	92.07	8,538.76	257.33	7,134.16	10.86	72,510.67	0.00	40.91	0.00	0.00	571.23	10,765.45	17,070.21	120,994.28
September	31.86	0.00	0.10	3,809.21	0.00	71.15	9,270.19	246.72	6,415.21	7.68	72,881.25	0.00	39.06	0.00	0.00	1,807.07	10,983.19	16,849.92	122,412.61
<b>Total</b>	<b>376.57</b>	<b>0.00</b>	<b>2.83</b>	<b>50,069.62</b>	<b>24.35</b>	<b>1,368.39</b>	<b>80,806.04</b>	<b>12,720.28</b>	<b>76,265.33</b>	<b>113.30</b>	<b>929,740.42</b>	<b>0.00</b>	<b>486.50</b>	<b>0.00</b>	<b>19.45</b>	<b>9,613.52</b>	<b>134,954.17</b>	<b>198,595.98</b>	<b>1,495,166.75</b>
<b>Average</b>	<b>31.38</b>	<b>0.00</b>	<b>0.24</b>	<b>4,172.47</b>	<b>2.03</b>	<b>114.03</b>	<b>6,733.84</b>	<b>1,060.02</b>	<b>6,355.44</b>	<b>9.44</b>	<b>77,478.37</b>	<b>0.00</b>	<b>40.54</b>	<b>0.00</b>	<b>1.62</b>	<b>801.13</b>	<b>11,246.18</b>	<b>16,549.67</b>	<b>124,596.40</b>
<b>Percent</b>	<b>0.03%</b>	<b>0.00%</b>	<b>0.00%</b>	<b>3.35%</b>	<b>0.00%</b>														

FY 09/10

Month	Animals	Reef	Asbestos	C/D	Residue	Tires	Sludge	Direct LF	Fill	Furn./App	Garbage	Land/Cirg.	Pest/Paint	Special	Trailers	Mulch	Trash/Other	Vegetation	Total
October	34.36	0.00	0.00	3,847.88	3.18	157.14	9,420.82	169.37	4,738.98	16.72	70,866.39	0.00	51.30	0.00	0.00	0.00	11,167.70	15,255.51	115,729.35
November	27.08	0.00	0.00	3,054.84	0.00	115.62	9,995.40	950.08	4,641.31	9.65	73,115.54	0.00	48.18	0.00	0.00	21.31	10,414.99	12,853.70	115,247.70
December	32.75	0.00	0.69	3,289.77	0.00	225.13	11,976.01	154.87	5,193.59	6.21	82,889.34	0.00	43.97	0.00	6.49	342.33	9,212.61	11,650.80	125,024.56
January	37.71	0.00	0.00	3,319.71	0.00	111.11	12,512.72	1,198.96	4,719.53	7.33	75,892.70	0.00	37.29	0.00	0.00	66.87	9,464.84	12,106.06	119,474.83
February	29.81	0.00	0.00	3,004.13	0.00	213.06	12,175.94	356.99	5,012.31	8.57	72,929.47	0.00	41.16	0.00	0.00	0.00	11,095.85	13,627.04	118,494.33
March	29.48	0.00	0.00	3,476.96	0.00	231.81	14,729.92	409.87	7,216.53	21.35	86,016.03	0.00	51.10	0.00	0.00	0.00	10,783.70	13,668.84	136,635.59
April	29.37	0.00	0.00	4,121.13	0.00	269.41	13,367.64	258.44	9,837.49	25.44	81,161.01	0.00	50.94	0.00	0.00	0.00	10,845.05	16,772.14	136,738.06
May	34.64	0.00	0.03	4,532.26	0.00	230.12	11,792.90	163.10	12,185.88	12.03	74,546.53	0.00	39.39	0.00	0.00	2.26	11,207.59	17,141.26	131,887.99
June	29.28	0.00	0.21	4,178.95	1.55	274.58	11,162.50	2,282.41	11,589.49	7.47	75,879.70	0.00	46.65	0.00	8.87	0.00	12,003.65	19,514.48	136,979.79
July	25.77	0.00	0.06	3,869.94	30.48	228.43	10,157.18	2,684.88	9,997.84	8.70	73,404.24	0.00	51.60	0.00	0.00	0.00	10,794.64	18,338.63	129,592.39
August	33.79	0.00	0.61	4,025.38	3.83	294.22	9,156.23	3,326.49	10,314.77	5.28	76,110.79	0.00	36.62	0.00	0.55	0.00	11,454.30	18,854.17	133,617.03
September	25.96	0.00	0.00	3,706.22	0.00	315.98	9,653.95	5,038.44	10,144.75	5.08	71,006.40	0.00	45.64	0.00	1.31	0.00	10,650.94	19,144.19	129,738.86
Total	370.00	0.00	1.60	44,427.17	39.04	2,666.61	136,101.21	16,993.90	95,592.47	133.83	913,818.14	0.00	543.84	0.00	17.22	432.77	129,995.86	188,926.82	1,529,160.48
Average	30.83	0.00	0.13	3,702.26	3.25	222.22	11,341.77	1,416.16	7,966.04	11.15	76,151.51	0.00	45.32	0.00	1.44	36.06	10,757.99	15,743.90	127,430.04
Percent	0.02%	0.00%	0.00%	2.91%	0.00%	0.17%	8.90%	1.11%	6.25%	0.01%	59.76%	0.00%	0.04%	0.00%	0.00%	0.03%	8.44%	12.35%	100.00%

FY 10/11

Month	Animals	Reef	Asbestos	C/D	Residue	Tires	Sludge	Direct LF	Fill	Furn./App	Garbage	Land/Cirg.	Pest/Paint	Special	Trailers	Mulch	Trash/Other	Vegetation	Total
October	30.12	0.00	0.00	3,498.89	4.68	235.32	10,147.66	3,883.71	9,466.70	10.27	69,959.02	0.00	42.26	0.00	5.31	0.00	10,840.32	16,648.61	123,772.87
November	29.35	0.00	1.60	3,096.25	0.00	246.08	10,678.64	1,746.41	10,271.44	10.18	74,647.92	0.00	48.21	0.00	0.00	0.00	10,378.46	13,822.17	124,976.71
December	30.36	0.00	0.00	3,796.25	0.00	196.09	12,173.85	2,316.39	9,592.44	8.38	76,488.44	0.00	70.95	0.00	0.00	0.00	10,155.09	11,248.98	126,067.22
January	36.79	0.00	0.00	5,034.01	0.00	123.45	12,649.98	5,435.85	9,174.41	5.03	77,127.86	0.00	43.44	0.00	0.00	0.00	10,793.93	13,101.10	133,525.85
February	32.11	0.00	0.00	3,603.60	0.00	97.96	12,404.21	1,978.64	7,485.51	11.02	70,892.60	0.00	43.24	0.00	0.00	2.21	10,922.38	13,248.26	126,721.74
March	28.26	0.00	0.00	3,593.53	11.55	132.55	14,925.40	334.08	7,651.95	4.69	81,073.70	0.00	49.94	0.00	0.00	4.16	12,272.83	15,637.83	135,720.47
April	26.07	0.00	0.00	3,219.78	0.00	87.56	13,506.01	880.73	4,174.76	5.19	75,721.67	0.00	43.85	0.00	0.00	0.00	11,675.83	15,140.69	124,482.14
May	26.49	0.00	0.00	3,477.41	2.05	149.73	11,268.44	3,852.16	5,497.89	7.32	74,907.65	0.00	42.46	0.00	0.00	0.00	12,915.89	15,704.22	127,851.71
June	26.75	0.00	0.00	4,090.84	0.29	98.70	9,657.26	426.02	5,955.48	3.70	72,632.73	0.00	46.68	0.00	0.00	3.93	16,242.53	16,922.94	122,107.85
July	29.94	0.00	0.09	3,234.54	29.57	108.84	9,938.54	172.35	5,690.87	4.48	70,532.55	0.00	49.18	0.00	0.00	0.00	11,773.15	16,183.17	117,747.27
August	28.36	0.00	0.00	4,439.98	5.56	78.02	9,071.37	183.34	6,800.66	6.32	76,639.17	0.00	50.71	0.00	0.00	2.23	13,589.53	18,618.91	129,514.16
September	31.73	0.00	0.00	4,066.52	7.11	93.03	9,759.60	3,770.29	5,344.82	7.84	71,686.98	0.00	17.93	0.00	0.00	2.05	12,453.31	17,137.58	124,378.79
Total	356.33	0.00	1.69	45,151.60	60.81	1,647.33	136,180.96	24,979.97	87,096.93	84.42	891,310.29	0.00	548.85	0.00	5.31	14.58	140,013.25	183,414.46	1,510,866.78
Average	29.69	0.00	0.14	3,762.63	5.07	137.28	11,348.41	2,081.66	7,258.08	7.04	74,275.86	0.00	45.74	0.00	0.44	1.22	11,667.77	15,284.54	125,905.57
Percent	0.02%	0.00%	0.00%	2.99%	0.00%	0.11%	9.01%	1.65%	5.76%	0.01%	58.99%	0.00%	0.04%	0.00%	0.00%	0.00%	9.27%	12.14%	100.00%

FY 11/12

Month	Animals	Reef	Asbestos	C/D	Residue	Tires	Sludge	Direct LF	Fill	Furn./App	Garbage	Land/Cirg.	Pest/Paint	Special	Trailers	Mulch	Trash/Other	Vegetation	Total
October	22.07	0.00	0.00	15,146.52	4,993.00	93.72	10,092.40	3,149.94	5,831.49	11.20	71,163.60	0.00	36.38	0.00	0.00	0.00	11,743.73	16,595.87	138,879.92
November	28.55	0.00	0.00	5,113.60	5,867.90	84.46	9,676.56	2,251.98	5,123.08	2.99	75,673.35	0.00	40.59	0.00	0.00	0.00	10,859.41	13,999.06	128,721.53
December	33.36	0.00	0.00	3,240.23	5,306.28	107.11	11,160.94	192.61	6,018.69	16.89	76,832.49	0.00	42.13	0.03	0.00	2.63	10,320.47	11,459.49	124,733.35
January	33.93	0.00	0.86	4,704.49	3,977.69	86.28	11,134.46	252.28	5,075.60	5.70	77,441.11	0.00	45.33	2.64	0.00	0.00	10,362.05	11,672.58	124,795.00
February	35.19	0.00	1.22	3,570.81	4,040.80	93.63	5,932.84	338.49	4,989.42	2.76	75,189.94	0.00	41.78	0.00	0.00	0.00	10,337.03	12,638.26	117,212.17
March	27.54	0.00	0.00	4,389.72	3,972.43	76.41	9,870.92	175.81	5,110.84	8.08	79,333.12	0.00	36.81	0.00	0.00	0.00	11,334.83	15,818.72	130,155.23
April	25.25	0.00	0.00	4,973.02	3,950.49	62.39	8,039.50	205.91	5,155.03	2.57	76,634.03	0.00	32.49	7.00	0.00	0.00	11,116.99	15,688.07	125,892.74
May	25.13	0.00	0.00	3,551.83	3,001.58	67.11	8,488.77	332.03	7,171.49	4.17	80,901.94	0.00	42.23	0.00	0.00	0.00	13,912.56	19,281.65	136,780.49
June	20.45	0.00	0.00	3,203.84	1,924.49	58.50	8,323.75	184.62	5,417.85	18.04	76,555.60	0.00	34.15	0.00	0.00	0.00	13,107.06	21,052.18	129,900.53
July	23.53	0.00	0.15	5,139.28	2,806.00	59.99	8,459.86	206.89	5,330.78	7.17	75,316.29	0.00	66.30	0.35	0.00	0.00	13,065.03	20,836.66	131,318.28
August	23.53	0.00	0.80	13,487.97	3,414.72	60.89	10,694.69	191.37	5,349.18	82.86	78,749.48	0.00	114.12	1.31	0.00	0.00	13,993.00	23,551.78	149,715.70
September	21.06	0.00	0.00	8,079.44	4,601.93	64.06	9,811.12	171.82	5,312.65	6.84	70,202.30	0.00	77.34	1.28	0.00	0.00	13,306.36	22,896.44	134,552.44
Total	319.59	0.00	3.03	74,600.75	47,857.31	914.55	111,685.81	7,653.75	65,886.10	169.07	913,993.25	0.00	609.65	12.61	0.00	2.63	143,458.52	205,490.76	1,572,657.38
Average	26.63	0.00	0.25	6,216.73	3,988.11	76.21	9,307.15	637.81	5,490.51	14.09	76,166.10	0.00	50.80	1.05	0.00	0.22	11,954.88	17,124.23	131,054.78
Percent	0.02%	0.00%	0.00%	4.74%	3.04%	0.06%	7.10%	0.49%	4.19%	0.01%	58.12%	0.00%	0.04%	0.00%	0.00%	0.00%	9.12%	13.07%	100.00%

FY 12/13

Month	Animals	Reef	Asbestos	C/D	Residue	Tires	Sludge	Direct LF	Fill	Furn./App	Garbage	Land/Cirg.	Pest/Paint	Special	Trailers	Mulch	Trash/Other	Vegetation	Total
October	35.19	0.00	0.00	5,508.51	6,688.72	78.83	9,129.10	177.72	6,415.01	6.71	78,246.71	0.00	86.29	0.00	0.00	0.00	14,628.63	20,379.34	141,380.76
November	25.15	0.00	0.00	4,329.48	7,162.35	78.62	9,819.24	206.21	5,986.52	4.19	74,940.47	0.00	85.55	0.00	0.37	6.47	12,602.87	16,995.64	132,243.13
December	26.90	0.00	0.20	3,700.96	5,844.30	77.86	11,035.55	222.00	5,425.92	7.04	77,166.80	0.00	78.26	1.86	0.00	0.00	11,600.60	13,044.36	128,232.61
January	26.46	0.00	0.73	4,839.29	4,106.56	223.39	13,073.08	347.52	6,749.96	13.15	81,948.05	0.00	113.33	0.00	0.00	0.00	13,378.87	15,829.81	140,650.20
February	27.38	0.00	0.69	3,070.22	3,575.41	94.05	11,720.90	431.63	6,340.28	3.48	72,027.16	0.00	69.75	0.00	0.00	0.00	11,539.54	14,195.12	123,095.61
March	29.49	0.00	0.00	3,588.63	3,998.66	96.20	12,131.99	300.78	7,468.22	6.67	76,834.03	0.00	96.29	0.00	0.00	0.00	12,744.05	16,167.57	133,462.58
April	23.03	0.00	0.00	4,380.85	4,174.07	107.45	13,401.39	292.53	7,481.92	7.46	82,386.06	0.00	98.80	0.00	0.00	0.00	14,041.39	19,304.34	145,699.29
May	22.50	0.00	0.00	4,428.66	4,084.75	115.27	11,092.75	357.01	9,534.33	7.10	85,128.76	0.00	119.79	0.00	0.00	0.00	14,785.01	23,574.65	153,250.58
June	19.21	0.00	0.11	4,557.02	5,990.42	113.45	9,563.84	259.96	6,629.84	8.82	74,702.71	0.00	91.14	0.00	0.00	0.00	14,076.25	23,941.57	139,954.34
July	17.14	0.00	0.00	4,229.54	10,496.05	111.55	10,480.44	338.50	8,882.88	5.52	81,962.61	0.00	68.06	0.00	0.00	0.00	14,801.60	27,717.24	159,111.13
August	21.28	0.00	0.00	3,977.68	11,325.60	78.42	9,646.18	252.74	9,169.37	6.77	75,959.99	0.00	54.58	0.00	0.00	0.00	14,760.79	25,775.86	151,029.26
September	25.62	0.00	0.03	3,897.14	11,094.69	110.42	8,943.81	211.81	8,193.59	6.15	74,577.27	0.00	52.34	2.88	0.00	0.00	14,104.80	23,459.56	144,680.11
<b>Total</b>	<b>299.35</b>	<b>0.00</b>	<b>1.76</b>	<b>50,507.98</b>	<b>78,541.58</b>	<b>1,285.51</b>	<b>130,038.27</b>	<b>3,398.41</b>	<b>88,277.84</b>	<b>83.06</b>	<b>935,880.62</b>	<b>0.00</b>	<b>1,014.18</b>	<b>4.74</b>	<b>0.37</b>	<b>6.47</b>	<b>163,064.40</b>	<b>240,385.06</b>	<b>1,692,789.60</b>
<b>Average</b>	<b>24.95</b>	<b>0.00</b>	<b>0.15</b>	<b>4,209.00</b>	<b>6,545.13</b>	<b>107.13</b>	<b>10,836.52</b>	<b>283.20</b>	<b>7,356.49</b>	<b>6.92</b>	<b>77,990.05</b>	<b>0.00</b>	<b>84.62</b>	<b>0.40</b>	<b>0.03</b>	<b>0.54</b>	<b>13,988.70</b>	<b>20,032.09</b>	<b>141,065.80</b>
<b>Percent</b>	<b>0.02%</b>	<b>0.00%</b>	<b>0.00%</b>	<b>2.98%</b>	<b>4.64%</b>	<b>0.08%</b>	<b>7.68%</b>	<b>0.20%</b>	<b>5.21%</b>	<b>0.00%</b>	<b>55.29%</b>	<b>0.00%</b>	<b>0.06%</b>	<b>0.00%</b>	<b>0.00%</b>	<b>0.00%</b>	<b>9.63%</b>	<b>14.20%</b>	<b>100.00%</b>

FY 13/14

Month	Animals	Reef	Asbestos	C/D	Residue	Tires	Sludge	Direct LF	Fill	Furn./App	Garbage	Land/Cirg.	Pest/Paint	Special	Trailers	Mulch	Trash/Other	Vegetation	Total
October	28.85	0.00	0.00	4,583.03	16,200.68	111.77	9,460.21	207.28	10,557.23	3.97	75,443.00	0.00	72.65	0.00	0.00	0.00	13,811.49	23,475.36	153,955.52
November	32.65	0.00	0.00	4,190.95	13,145.96	87.83	10,722.55	265.60	9,175.18	6.96	75,574.02	0.00	79.39	0.00	0.00	0.00	12,401.89	19,008.95	144,689.93
December	33.41	0.00	0.22	4,426.48	14,133.74	73.58	11,687.73	515.82	7,621.58	5.42	84,224.00	0.00	47.01	0.00	0.00	0.00	12,524.90	16,622.70	151,916.59
January	36.04	0.00	0.00	4,295.12	14,283.69	170.39	12,700.88	314.07	5,448.43	5.26	85,788.77	0.00	67.22	0.00	0.00	0.00	12,745.41	18,956.24	154,211.52
February	33.12	0.00	0.00	4,072.18	13,088.48	133.34	12,567.68	354.40	5,744.63	6.92	76,219.90	0.00	56.86	0.32	0.00	0.00	12,588.47	16,418.34	141,284.64
March	32.90	0.00	0.00	4,638.83	11,231.46	93.82	14,108.70	232.59	5,269.67	3.81	82,162.62	0.00	58.59	0.00	0.00	0.00	13,617.15	18,904.63	150,354.77
April	31.41	0.00	0.00	5,207.57	12,888.31	64.25	13,692.57	225.16	5,890.96	6.79	81,990.38	0.00	57.49	0.00	0.00	0.00	13,308.18	20,444.57	153,807.64
May	30.40	0.00	0.00	4,925.54	12,263.88	62.57	13,898.20	182.75	7,123.98	6.32	80,068.18	0.00	81.65	0.00	0.00	0.00	14,624.89	22,441.66	155,710.02
June	23.40	0.00	0.00	5,716.16	14,335.13	75.32	10,928.44	203.41	6,946.40	5.91	78,010.67	0.00	66.08	0.36	0.00	0.00	13,876.92	24,034.80	154,222.98
July	26.48	0.00	0.00	5,372.68	13,510.52	83.69	10,378.50	229.80	7,593.00	4.78	82,768.50	0.00	73.85	2.00	0.00	0.00	14,951.77	26,199.99	161,195.56
August	22.01	0.00	0.00	5,302.54	12,369.11	56.21	11,058.23	260.46	7,183.14	6.81	76,657.35	0.00	51.49	0.00	0.00	0.00	14,100.30	23,856.59	150,924.24
September	25.22	0.00	0.00	4,908.73	9,188.99	118.37	11,199.85	189.61	7,676.63	9.68	78,974.89	0.00	72.27	10.50	0.00	0.00	13,915.46	25,011.73	151,301.93
<b>Total</b>	<b>355.89</b>	<b>0.00</b>	<b>0.22</b>	<b>57,639.81</b>	<b>156,639.95</b>	<b>1,131.14</b>	<b>142,403.54</b>	<b>3,180.95</b>	<b>86,230.83</b>	<b>72.63</b>	<b>957,882.28</b>	<b>0.00</b>	<b>784.63</b>	<b>13.18</b>	<b>0.00</b>	<b>0.00</b>	<b>162,466.83</b>	<b>254,775.56</b>	<b>1,823,577.34</b>
<b>Average</b>	<b>29.66</b>	<b>0.00</b>	<b>0.02</b>	<b>4,803.32</b>	<b>13,053.33</b>	<b>94.26</b>	<b>11,866.96</b>	<b>265.08</b>	<b>7,185.90</b>	<b>6.05</b>	<b>79,823.52</b>	<b>0.00</b>	<b>65.38</b>	<b>1.10</b>	<b>0.00</b>	<b>0.00</b>	<b>13,538.90</b>	<b>21,231.30</b>	<b>151,964.78</b>
<b>Percent</b>	<b>0.02%</b>	<b>0.00%</b>	<b>0.00%</b>	<b>3.16%</b>	<b>8.59%</b>	<b>0.06%</b>	<b>7.81%</b>	<b>0.17%</b>	<b>4.73%</b>	<b>0.00%</b>	<b>52.53%</b>	<b>0.00%</b>	<b>0.04%</b>	<b>0.00%</b>	<b>0.00%</b>	<b>0.00%</b>	<b>8.91%</b>	<b>13.97%</b>	<b>100.00%</b>

FY 14/15

Month	Animals	Broward	Asbestos	C/D	Residue	Tires	Sludge	Direct LF	Fill	Furn./App	Garbage	Land/Cirg.	Pest/Paint	Special	Trailers	Mulch	Trash/Other	Vegetation	Total
October	29.48	0.00	0.00	5,226.86	10,243.53	88.66	12,081.65	280.82	7,571.24	7.68	79,357.78	0.00	61.86	12.19	0.00	0.00	14,978.83	24,386.43	154,327.01
November	31.64	0.00	0.00	5,783.13	7,234.25	343.16	10,193.67	141.29	5,592.65	18.68	73,392.13	0.00	41.76	0.00	0.00	0.00	12,533.33	19,339.33	144,645.02
December	27.72	0.00	0.67	5,082.04	4,223.79	383.13	12,856.47	200.95	2,399.98	6.55	88,157.06	0.00	61.11	0.00	0.00	0.00	12,743.69	18,233.07	144,376.23
January	38.96	0.00	0.54	5,254.73	10,113.00	173.31	14,053.88	308.94	6,284.41	7.96	84,348.41	0.00	81.17	0.00	0.00	0.00	13,967.71	18,996.60	147,973.64
February	25.15	0.00	0.00	5,033.87	7,691.68	187.87	11,890.07	441.52	66.00	5.67	75,700.47	0.00	137.08	9.90	0.00	0.00	12,192.64	17,279.87	130,661.79
March	30.40	0.00	0.00	5,922.59	4,861.93	308.03	13,672.39	317.05	74.31	11.80	86,594.10	0.00	89.14	0.00	0.00	0.00	14,844.68	21,846.90	148,573.32
April	26.52	1,716.04	0.26	5,329.32	6,723.45	412.85	12,729.18	334.43	375.25	4.13	85,200.62	0.00	53.48	13.45	0.00	0.00	15,165.16	23,543.39	151,627.53
May	23.31	13,243.47	2.47	5,681.19	7,064.19	460.63	11,580.29	148.59	149.68	15.24	80,749.22	0.00	67.47	0.00	0.00	0.00	13,980.58	23,078.31	156,244.64
June	25.92	14,850.44	0.00	5,989.14	6,427.66	402.34	10,691.12	203.10	238.04	4.97	82,543.50	0.00	70.91	0.00	1.36	0.00	14,074.53	25,779.88	161,302.91
July	28.31	18,913.18	0.75	6,633.32	6,881.33	470.70	10,725.47	252.88	344.41	8.10	81,722.94	0.00	72.20	0.00	0.00	0.00	15,554.56	26,047.48	167,655.63
August	24.13	18,615.58	0.00	6,798.82	7,914.06	583.87	11,602.11	341.04	193.45	7.32	79,548.75	0.00	56.08	0.00	0.00	0.00	16,023.22	26,765.69	168,474.12
September	32.99	14,172.28	0.33	5,769.98	2,619.15	800.08	11,052.26	280.23	226.89	8.13	79,810.02	0.00	50.45	0.00	23.14	0.00	15,241.66	24,836.08	154,923.67
<b>Total</b>	<b>344.53</b>	<b>81,510.99</b>	<b>5.02</b>	<b>68,504.99</b>	<b>81,998.02</b>	<b>4,614.63</b>	<b>143,128.56</b>	<b>3,250.84</b>	<b>17,860.33</b>	<b>106.23</b>	<b>977,125.00</b>	<b>0.00</b>	<b>842.71</b>	<b>35.54</b>	<b>24.50</b>	<b>0.00</b>	<b>171,300.59</b>	<b>270,133.03</b>	<b>1,820,785.51</b>
<b>Average</b>	<b>28.71</b>	<b>6,792.58</b>	<b>0.42</b>	<b>5,708.75</b>	<b>6,833.17</b>	<b>384.55</b>	<b>11,927.38</b>	<b>270.90</b>	<b>1,488.36</b>	<b>8.85</b>	<b>81,427.08</b>	<b>0.00</b>	<b>70.23</b>	<b>2.96</b>	<b>2.04</b>	<b>0.00</b>	<b>14,275.05</b>	<b>22,511.09</b>	<b>157,732.13</b>
<b>Percent</b>	<b>0.02%</b>	<b>4.48%</b>	<b>0.00%</b>	<b>3.76%</b>	<b>4.50%</b>	<b>0.25%</b>	<b>7.86%</b>	<b>0.18%</b>	<b>0.98%</b>	<b>0.01%</b>	<b>53.67%</b>	<b>0.00%</b>	<b>0.05%</b>	<b>0.00%</b>	<b>0.00%</b>	<b>0.00%</b>	<b>9.41%</b>	<b>14.84%</b>	<b>100.00%</b>

## FY 15/16

Month	Animals	Broward	Asbestos	C/D	Residue	Tires	Sludge	Direct LF	Fill	Furn./App	Garbage	Land/Cirg.	Pest/Paint	Special	Trailers	Mulch	Trash/Other	Vegetation	Total
October	22.36	6,836.95	0.49	6,680.61	113.17	763.19	11,742.95	281.20	146.60	9.73	79,540.24	0.00	63.26	0.00	17.38	0.00	15,413.22	27,251.27	148,882.62
November	40.83	11,778.74	0.00	5,687.66	275.43	578.33	10,843.59	240.03	191.13	10.44	80,803.02	0.00	58.80	0.00	0.00	0.00	13,200.19	21,537.07	145,245.26
December	42.68	17,310.96	0.00	5,372.19	2,893.86	801.01	12,432.92	464.83	60.49	5.09	93,088.45	0.00	68.83	0.00	0.00	0.00	14,973.59	21,798.49	169,313.39
January	41.95	19,515.01	0.00	5,963.10	9,338.62	1,028.42	12,530.05	432.71	482.46	9.33	87,795.42	0.00	72.94	0.00	0.00	0.00	14,678.20	20,656.21	172,544.42
February	35.15	22,158.42	0.00	6,399.84	11,151.42	906.30	13,147.47	687.53	97.40	14.31	85,872.43	0.00	64.99	0.00	5.34	0.00	15,470.93	22,786.52	178,798.05
March	35.24	26,018.09	0.21	7,016.40	10,159.53	1,843.29	15,421.82	414.55	227.10	9.46	90,320.68	0.00	72.57	0.00	0.00	0.00	16,594.94	24,980.00	193,113.88
April	28.54	1,802.17	0.22	6,544.62	11,482.30	1,342.83	13,307.38	634.92	387.94	12.21	84,891.79	0.00	74.09	0.00	0.00	0.00	16,908.52	25,166.88	162,584.41
May	22.10	11,302.57	1.48	8,305.63	11,929.27	2,267.88	10,935.23	538.97	271.29	16.61	86,878.85	0.00	66.27	0.00	5.84	0.00	16,936.13	26,718.18	176,196.30
June	25.92	9,555.21	0.00	8,227.79	3,412.82	882.78	10,181.83	411.16	0.00	10.36	84,694.95	0.00	70.95	0.00	6.38	0.00	18,227.73	29,277.87	164,985.75
July	19.95	13,632.09	0.23	7,610.84	57.75	1,770.54	8,868.80	370.03	310.69	7.00	79,165.56	0.00	61.80	0.00	0.00	0.00	16,184.99	26,292.49	154,352.76
August	22.90	15,229.60	0.00	8,602.34	1,243.30	1,047.84	9,835.16	434.50	281.43	14.61	86,814.12	0.00	66.86	0.47	0.00	0.00	17,491.21	29,794.76	170,879.10
September	22.06	14,962.76	2.20	9,052.60	0.00	769.54	8,200.67	509.32	457.99	7.44	81,688.80	0.00	63.34	0.00	0.00	0.00	16,703.14	28,247.12	160,686.98
<b>Total</b>	<b>359.68</b>	<b>170,102.57</b>	<b>4.83</b>	<b>85,463.62</b>	<b>62,057.47</b>	<b>14,001.95</b>	<b>137,447.87</b>	<b>5,419.75</b>	<b>2,914.52</b>	<b>126.59</b>	<b>1,021,554.31</b>	<b>0.00</b>	<b>804.70</b>	<b>0.47</b>	<b>34.94</b>	<b>0.00</b>	<b>192,782.79</b>	<b>304,606.86</b>	<b>1,997,582.92</b>
<b>Average</b>	<b>29.97</b>	<b>14,175.21</b>	<b>0.40</b>	<b>7,121.97</b>	<b>5,171.46</b>	<b>1,166.83</b>	<b>11,453.99</b>	<b>451.65</b>	<b>242.88</b>	<b>10.55</b>	<b>85,129.53</b>	<b>0.00</b>	<b>67.06</b>	<b>0.04</b>	<b>2.91</b>	<b>0.00</b>	<b>16,065.23</b>	<b>25,375.57</b>	<b>166,465.24</b>
<b>Percent</b>	<b>0.02%</b>	<b>8.52%</b>	<b>0.00%</b>	<b>4.28%</b>	<b>3.11%</b>	<b>0.70%</b>	<b>6.88%</b>	<b>0.27%</b>	<b>0.15%</b>	<b>0.01%</b>	<b>51.14%</b>	<b>0.00%</b>	<b>0.04%</b>	<b>0.00%</b>	<b>0.00%</b>	<b>0.00%</b>	<b>9.65%</b>	<b>15.24%</b>	<b>100.00%</b>

## FY 16/17

Month	Animals	Broward	Asbestos	C/D	Residue	Tires	Sludge	Direct LF	Fill	Furn./App./Fe	Garbage	Land/Cirg.	Pest/Paint/NH	Special	Trailers	Mulch	Trash/Other	Vegetation	Total
October	25.84	12,986.09	1.35	8,194.28	0.00	714.51	8,591.51	777.98	0.00	11.81	83,797.97	0.00	78.20	1.21	0.00	0.00	17,067.52	33,918.19	168,166.46
November	31.45	13,310.86	2.18	7,857.00	0.27	574.15	9,984.27	585.76	331.23	8.06	83,325.54	0.00	73.18	0.00	0.00	0.00	15,623.78	25,830.29	157,538.02
December	26.72	21,450.15	0.88	7,201.36	0.12	584.90	13,338.92	684.10	271.10	10.25	88,989.08	0.00	52.81	0.00	4.86	0.00	15,355.07	21,386.42	169,356.74
January	33.56	21,675.78	0.00	7,901.05	0.00	966.57	11,740.64	912.16	286.91	9.00	89,227.80	0.00	80.02	0.00	0.00	0.00	15,528.34	23,157.54	171,519.57
February	23.12	19,788.02	0.88	7,149.95	0.00	592.73	12,063.02	741.24	138.52	9.46	80,036.67	0.00	176.42	0.00	0.00	0.00	14,783.53	21,305.57	156,809.13
March	24.40	13,382.14	0.18	8,519.05	0.80	811.59	13,176.72	635.88	185.80	12.52	90,379.23	0.00	80.88	0.00	0.00	0.00	17,579.64	25,309.11	170,097.94
April	27.53	6,930.33	2.38	8,403.72	0.00	746.59	12,280.60	10,137.93	250.91	12.01	82,319.27	0.00	77.13	0.76	0.00	0.00	15,009.83	23,530.38	159,629.37
May	24.45	9,705.56	0.35	8,964.43	0.00	761.35	13,390.12	574.16	408.07	7.87	90,616.28	0.00	81.45	0.00	5.77	0.00	17,257.96	28,341.88	170,139.50
June	29.51	13,138.95	0.54	9,703.32	0.00	878.21	11,464.80	1,137.89	161.50	11.05	88,717.50	0.00	106.97	0.00	0.00	0.00	17,167.97	30,589.28	173,107.49
July	22.53	16,222.03	0.56	9,328.41	0.00	939.72	10,767.68	1,790.00	217.60	8.77	82,486.77	0.00	83.38	0.00	0.00	0.00	15,985.70	27,842.51	165,695.66
August	37.93	14,314.32	0.00	9,187.36	0.00	921.13	10,264.33	590.01	163.58	13.86	86,138.15	0.00	84.35	0.00	0.00	0.00	18,049.26	30,638.36	170,402.64
September	23.59	13,275.60	4.64	8,070.19	0.00	1,081.36	8,963.70	602.78	0.00	13.00	89,957.81	0.00	82.54	0.00	0.00	0.00	14,214.37	34,164.22	170,453.80
<b>Average</b>	<b>330.63</b>	<b>176,079.83</b>	<b>13.94</b>	<b>100,480.12</b>	<b>1.19</b>	<b>9,572.81</b>	<b>136,026.51</b>	<b>19,169.89</b>	<b>2,415.22</b>	<b>127.66</b>	<b>1,035,992.07</b>	<b>0.00</b>	<b>1,057.33</b>	<b>1.97</b>	<b>10.63</b>	<b>0.00</b>	<b>193,622.97</b>	<b>326,013.55</b>	<b>2,000,916.32</b>
<b>Percent</b>	<b>27.55</b>	<b>14,673.32</b>	<b>1.16</b>	<b>8,373.34</b>	<b>0.10</b>	<b>797.73</b>	<b>11,335.54</b>	<b>1,897.49</b>	<b>201.27</b>	<b>10.64</b>	<b>86,332.67</b>	<b>0.00</b>	<b>88.11</b>	<b>0.16</b>	<b>0.89</b>	<b>0.00</b>	<b>16,135.25</b>	<b>27,167.80</b>	<b>166,743.03</b>
<b>Percent</b>	<b>0.02%</b>	<b>8.80%</b>	<b>0.00%</b>	<b>5.02%</b>	<b>0.00%</b>	<b>0.48%</b>	<b>6.80%</b>	<b>0.96%</b>	<b>0.12%</b>	<b>0.01%</b>	<b>51.78%</b>	<b>0.00%</b>	<b>0.05%</b>	<b>0.00%</b>	<b>0.00%</b>	<b>0.00%</b>	<b>9.68%</b>	<b>16.29%</b>	<b>100.00%</b>

## FY 17/18

Month	Animals	Broward	Asbestos	C/D	Residue	Tires	Sludge	Direct LF/ LW	Fill	Furn./App./Fe	Garbage	Land/Cirg.	Pest/Paint/NH	Special	Trailers	Mulch	Trash/Other	Vegetation	Total
October	29.40	9,250.80	0.32	12,304.42	0.71	1,280.44	11,466.71	615.42	342.56	8.78	89,706.27	0.00	66.08	0.00	0.00	0.00	18,555.59	35,385.22	179,012.72
November	24.07	7,275.00	0.55	10,377.24	0.00	906.32	9,557.66	780.41	56.19	14.51	90,373.24	0.00	104.39	10.87	10.63	0.00	19,395.73	29,952.22	168,839.03
December	26.76	1,089.49	1.96	9,606.63	2.30	950.08	10,614.81	2,250.80	73.64	13.73	86,985.29	0.00	104.18	0.00	0.00	0.00	17,084.18	21,957.18	150,761.03
January	29.92	6,999.30	0.00	10,284.33	0.00	1,156.99	13,447.39	2,298.58	321.73	11.27	95,260.87	0.00	119.42	0.00	0.00	0.00	18,858.10	24,806.32	173,594.22
February	22.27	13,725.59	0.00	9,914.39	0.00	1,076.02	11,622.12	2,175.22	73.37	10.94	81,602.58	0.00	134.43	0.00	7.24	0.00	16,408.33	23,586.51	160,359.01
March	27.93	8,839.98	0.00	11,041.04	0.27	1,288.16	13,178.22	5,616.22	158.82	11.36	89,448.51	0.00	161.74	0.00	0.00	0.00	18,094.95	27,516.60	175,383.80
April	33.75	9,210.87	0.66	10,429.41	3.31	1,150.57	13,831.85	4,506.26	354.39	7.22	88,793.47	0.00	125.95	0.00	6.80	0.00	17,624.75	26,110.36	172,189.62
May	26.52	1,826.22	0.89	11,799.04	0.00	1,027.36	13,198.69	2,917.63	121.34	15.73	95,192.75	0.00	115.07	1.96	10.14	0.00	19,318.42	30,270.50	175,841.37
June	19.50	6,864.47	0.00	12,131.65	0.00	1,111.28	11,848.56	2,700.82	614.01	11.06	88,012.88	0.00	155.17	0.00	0.00	0.00	18,825.02	33,598.55	175,893.86
July	21.59	186.68	0.00	12,105.43	0.00	2,375.98	10,986.71	1,839.64	37.62	14.21	87,294.56	0.00	122.79	3.49	0.00	0.00	19,199.01	32,965.46	167,153.17
August	23.77	120.57	0.02	12,824.27	0.08	2,025.09	10,988.03	2,410.92	336.24	14.08	85,896.56	0.00	164.95	0.00	0.00	0.00	18,390.26	31,272.33	164,267.17
September	27.46	2,641.13	1.04	12,634.32	0.00	1,984.17	10,780.93	1,243.71	27.57	19.48	76,717.16	0.00	129.81	5.36	0.00	0.00	16,168.33	26,557.82	148,938.29
<b>Percent</b>	<b>312.94</b>	<b>68,030.10</b>	<b>5.44</b>	<b>135,452.17</b>	<b>6.67</b>	<b>16,332.46</b>	<b>141,521.68</b>	<b>29,355.63</b>	<b>2,517.48</b>	<b>152.37</b>	<b>1,055,084.14</b>	<b>0.00</b>	<b>1,503.98</b>	<b>21.68</b>	<b>34.81</b>	<b>0.00</b>	<b>217,922.67</b>	<b>343,979.07</b>	<b>2,012,233.29</b>
<b>Percent</b>	<b>26.08</b>	<b>5,669.18</b>	<b>0.54</b>	<b>11,287.68</b>	<b>0.95</b>	<b>1,361.04</b>	<b>11,793.47</b>	<b>2,446.30</b>	<b>209.79</b>	<b>12.70</b>	<b>87,923.68</b>	<b>0.00</b>	<b>125.33</b>	<b>1.81</b>	<b>2.90</b>	<b>0.00</b>	<b>18,160.22</b>	<b>28,664.92</b>	<b>167,686.11</b>
<b>Percent</b>	<b>0.02%</b>	<b>3.38%</b>	<b>0.00%</b>	<b>6.73%</b>	<b>0.00%</b>	<b>0.81%</b>	<b>7.03%</b>	<b>1.46%</b>	<b>0.13%</b>	<b>0.01%</b>	<b>52.43%</b>	<b>0.00%</b>	<b>0.07%</b>	<b>0.00%</b>	<b>0.00%</b>	<b>0.00%</b>	<b>10.83%</b>	<b>17.09%</b>	<b>100.00%</b>